

# Need for a Southwest Michigan Study

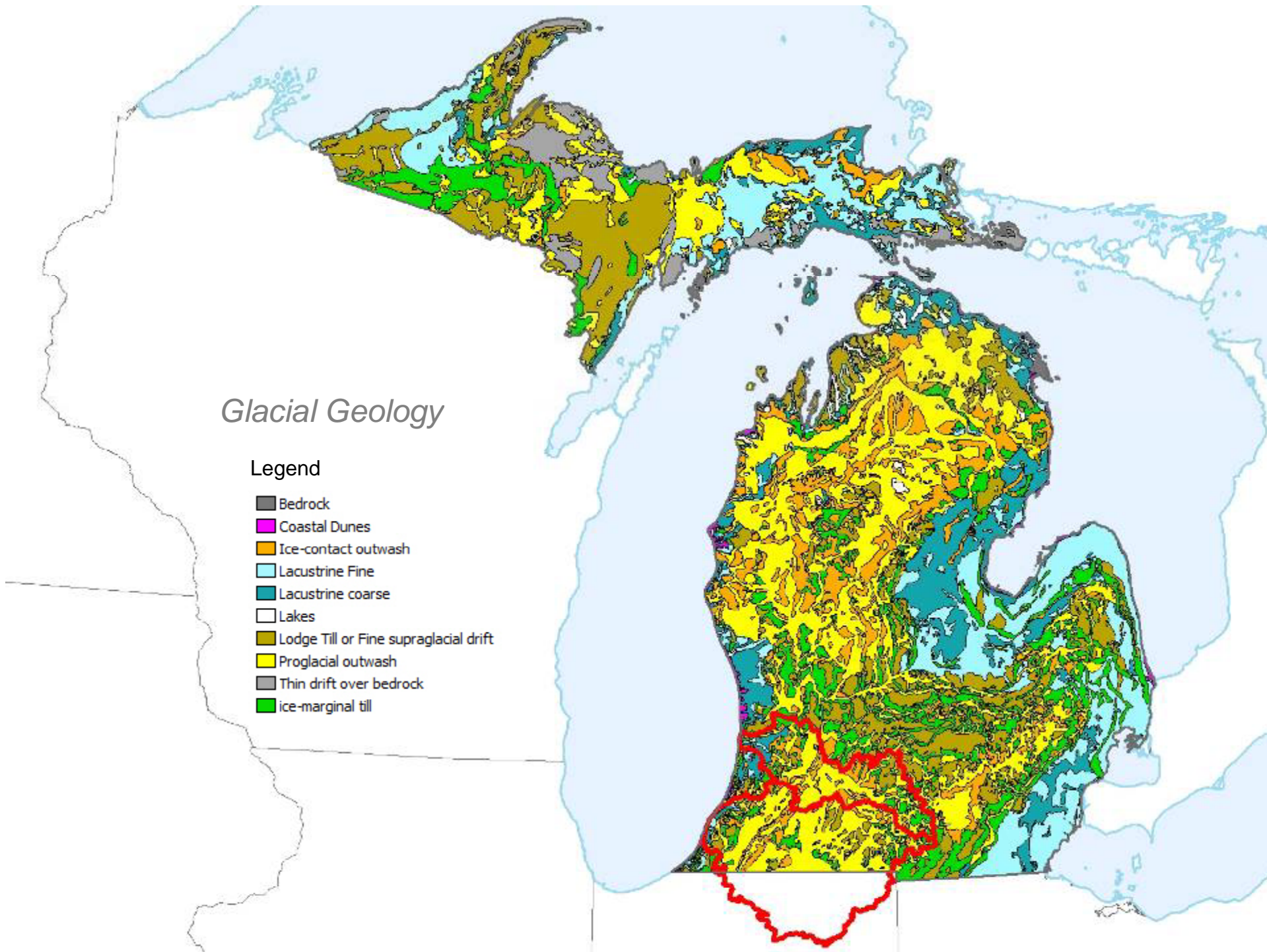
Southwest Michigan Water Resources  
Council, September 9, 2011

Why study the groundwater &  
surface water resources in  
Southwest Michigan?

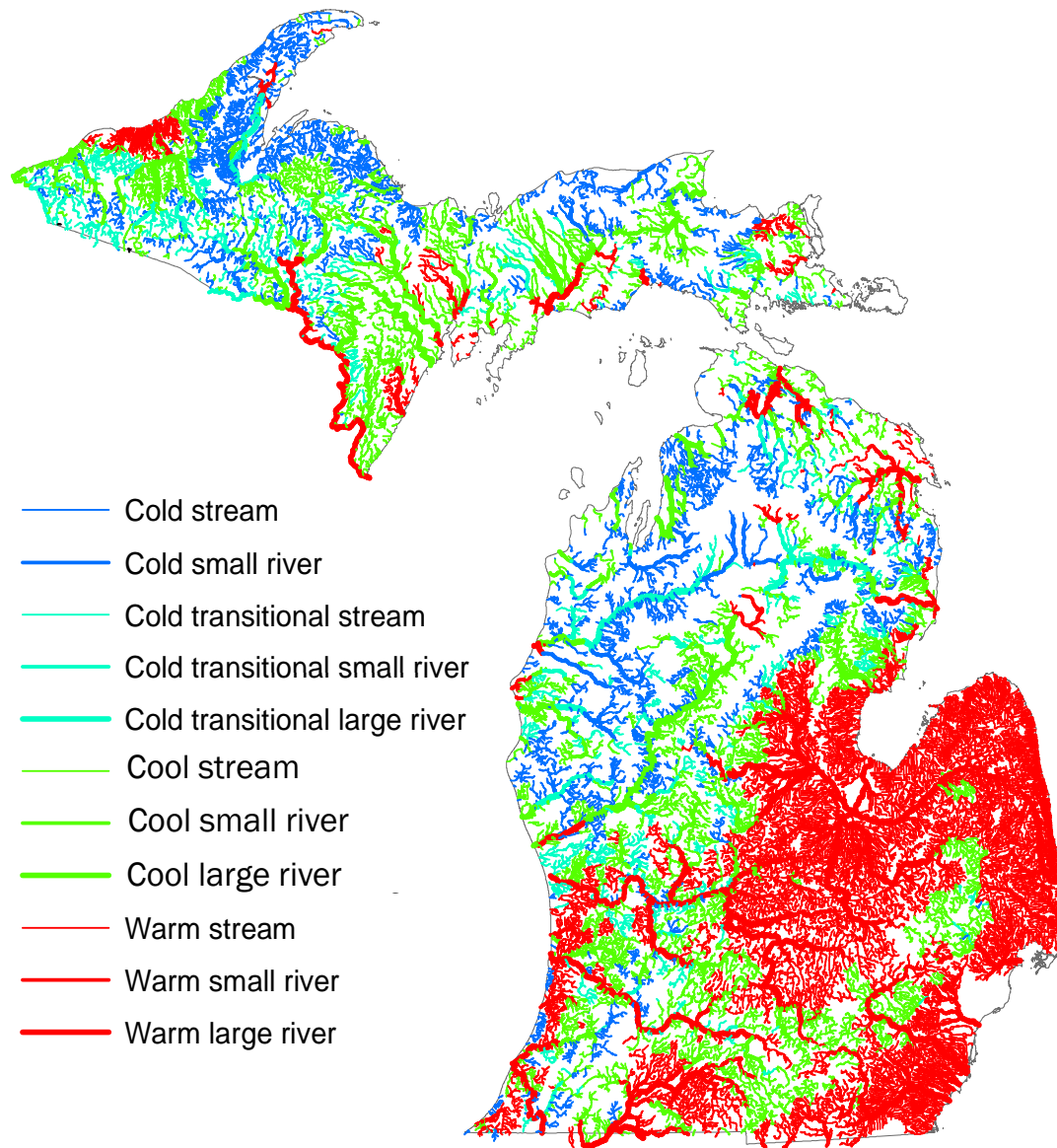
## *Glacial Geology*

### Legend

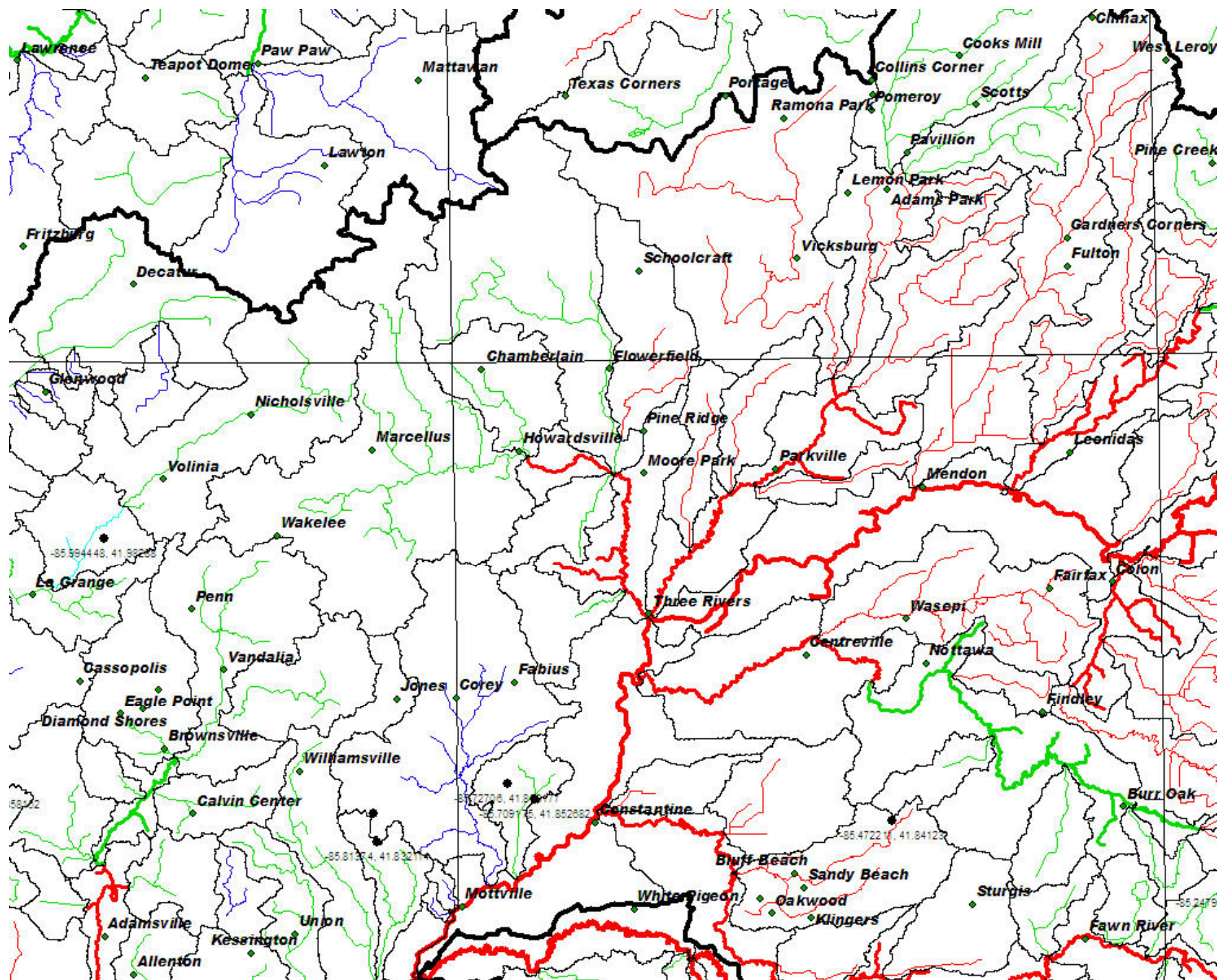
- Bedrock
- Coastal Dunes
- Ice-contact outwash
- Lacustrine Fine
- Lacustrine coarse
- Lakes
- Lodge Till or Fine supraglacial drift
- Proglacial outwash
- Thin drift over bedrock
- ice-marginal till



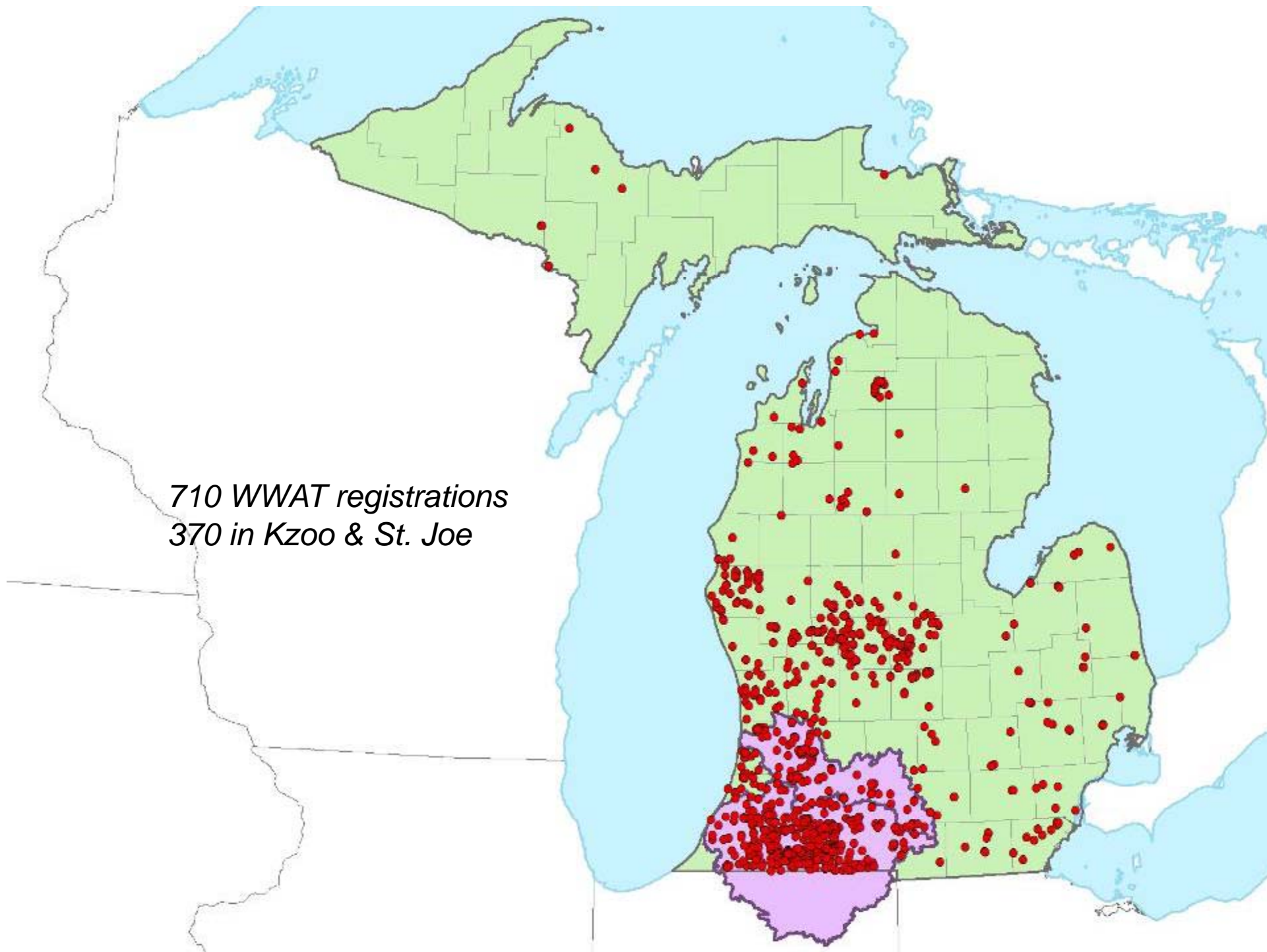
# ***Stream Classification in Michigan***





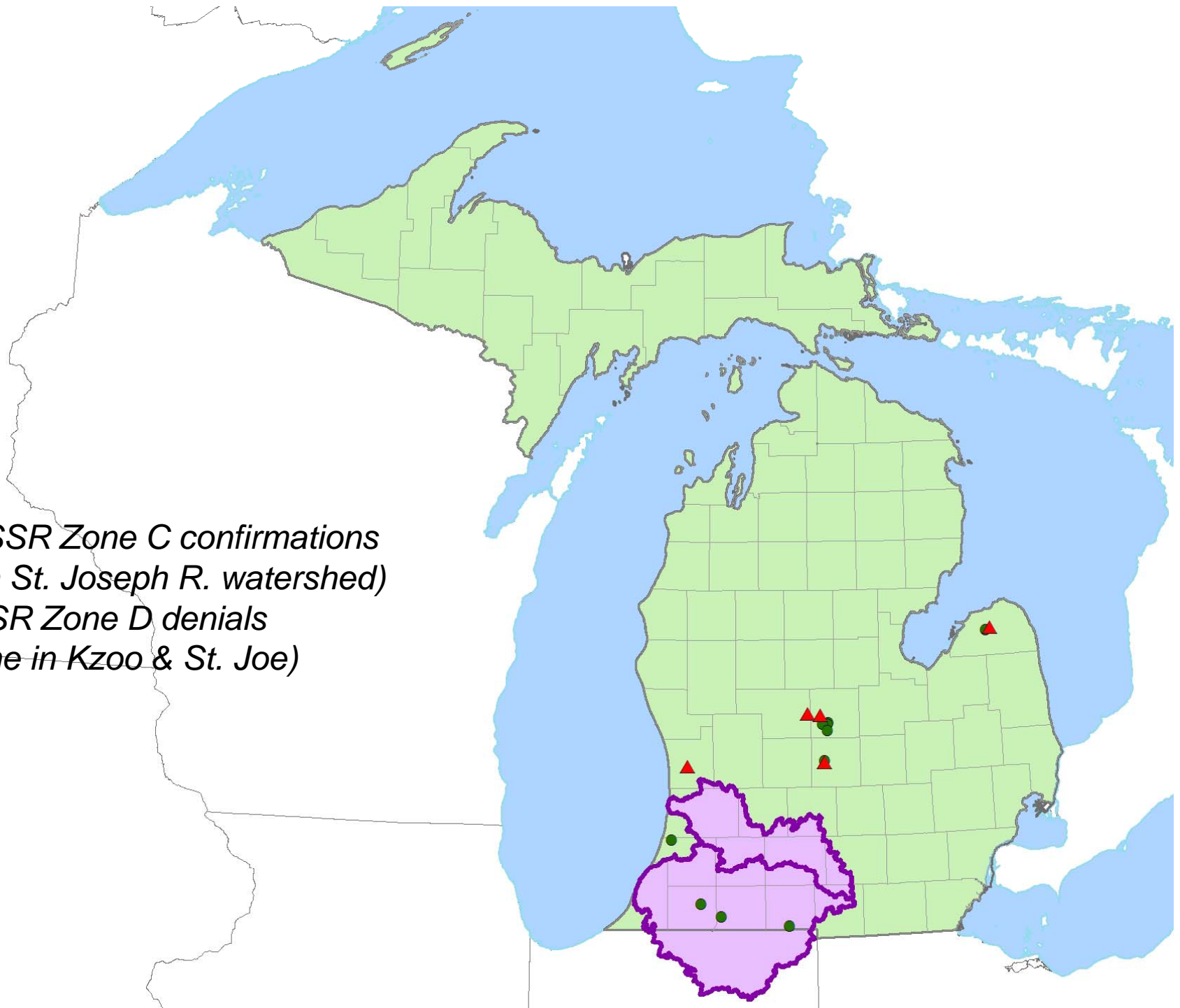


*710 WWAT registrations  
370 in Kzoo & St. Joe*





*10 SSR Zone C confirmations  
(3 in St. Joseph R. watershed)  
5 SSR Zone D denials  
(none in Kzoo & St. Joe)*



*Zone C watersheds*

