

# **SW MI Materials Management Planning Committee Agenda**

September 15, 2025

1:00 p.m.

Location: Pokagon Band Tribal Police Department Emergency Operations Center

58620 Sink Rd, Dowagiac, MI49047

**1. Call to Order & Roll Call**

Kalli Marshall, VBCD, Chair

**2. Approval of Agenda**

**3. Approval of August 18, 2025 Minutes**

**4. Old Business**

Update on Working Groups Interest Form

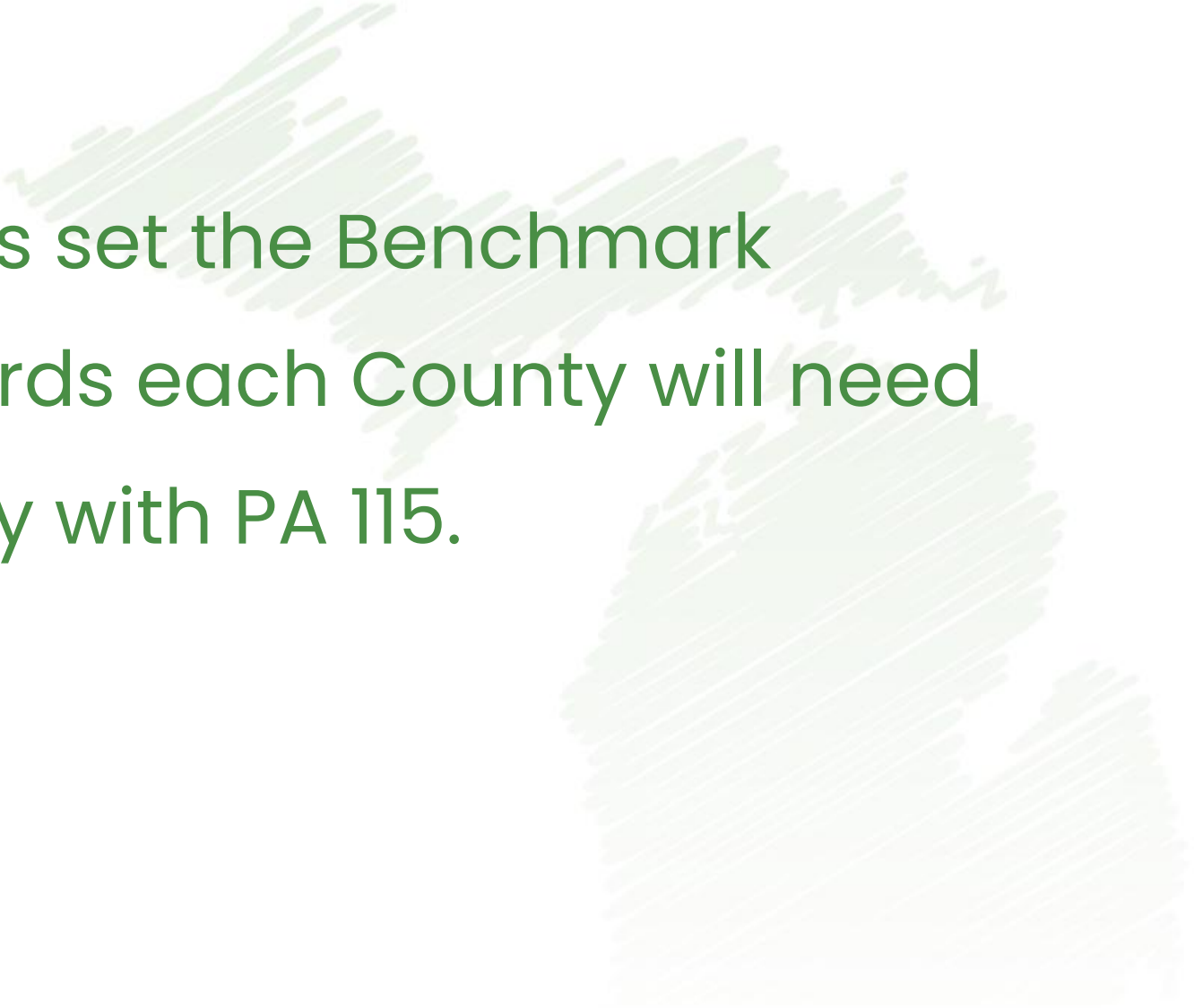
Bekah Schrag, DPA



# Michigan Materials Management Planning Recycling Goals

# WHY

Michigan EGLE has set the Benchmark Recycling Standards each County will need to meet to comply with PA 115.



The background image shows a recycling facility. In the foreground, there is a large pile of loose, crumpled paper waste. Behind it, several large, rectangular bales of compressed paper are stacked. The entire image is covered with a semi-transparent green overlay. The text "Best Practices" is centered in the middle of the image in a white, serif font.

# Best Practices



# CURBSIDE RECYCLING PROGRAMS

---

- Curbside Carts
- Hauling Contracts
- Have a maintenance plan for contamination
- Make sure all residents have access, which means everyone in the community has a cart
- Institute a recurring annual recycling budget



# DROP-OFF RECYCLING PROGRAMS

---

- Add clear signage at your drop-off locations
- Location is everything
- Contamination management:
  - Staffed
  - Fenced
  - Cameras
  - Anti litter ordinance posted
- Adequate collection containers:
  - Collection capacity
  - Contamination from weather
  - Bulk item, Etc.



# MULTI-FAMILY RECYCLING PROGRAMS

- Consider a multi-family recycling ordinance
  - Ex. City of Ferndale
- Engage EARLY & OFTEN with property owners, management companies, service providers & tenants
  - Consider diverse populations & transcreating materials

\*Access & infrastructure may look different for each housing structure







# Goal Ideas



# SCHOOL RECYCLING PROGRAMS

---

- **Contracting** for district level solid waste service and recycling
- **Establish Green Teams** to improve engagement and participation
- **Waste Audits** to establish a baseline and understand needs/cost savings
- **Curriculum** to educate about and encourage participation
- Infrastructure to support collection
  - Classroom containers for paper, bottles, and cans
  - Cafeteria containers for recycling, food waste, or food rescue "share table"
- **Low/Zero Waste** school events
  - Reusables in the classroom and cafeteria
  - Recycling and sporting events

# COMMERCIAL RECYCLING PROGRAMS

Explore  
sustainability  
certifications and  
market to  
companies

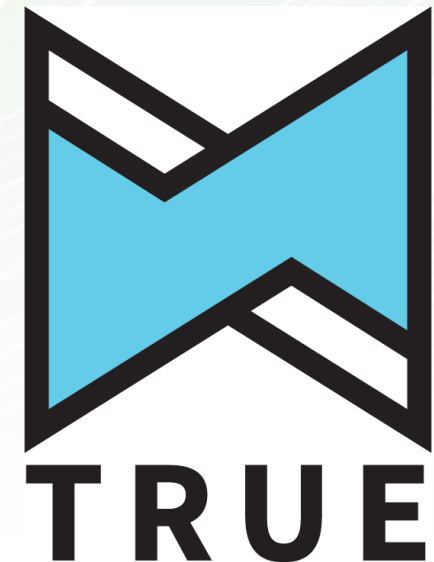
Certified



Corporation



Green Building :  
Leadership in Energy and Environmental Design, LEED



## **6. New Business**

Benchmark Recycling Requirements

Bekah Schrag, DPA

Recycling Goal Setting

Bekah Schrag, DPA



# Benchmark Recycling Standards



**January 1, 2026:** Urban Areas

**January 1, 2028:** Municipalities with more than 5,000

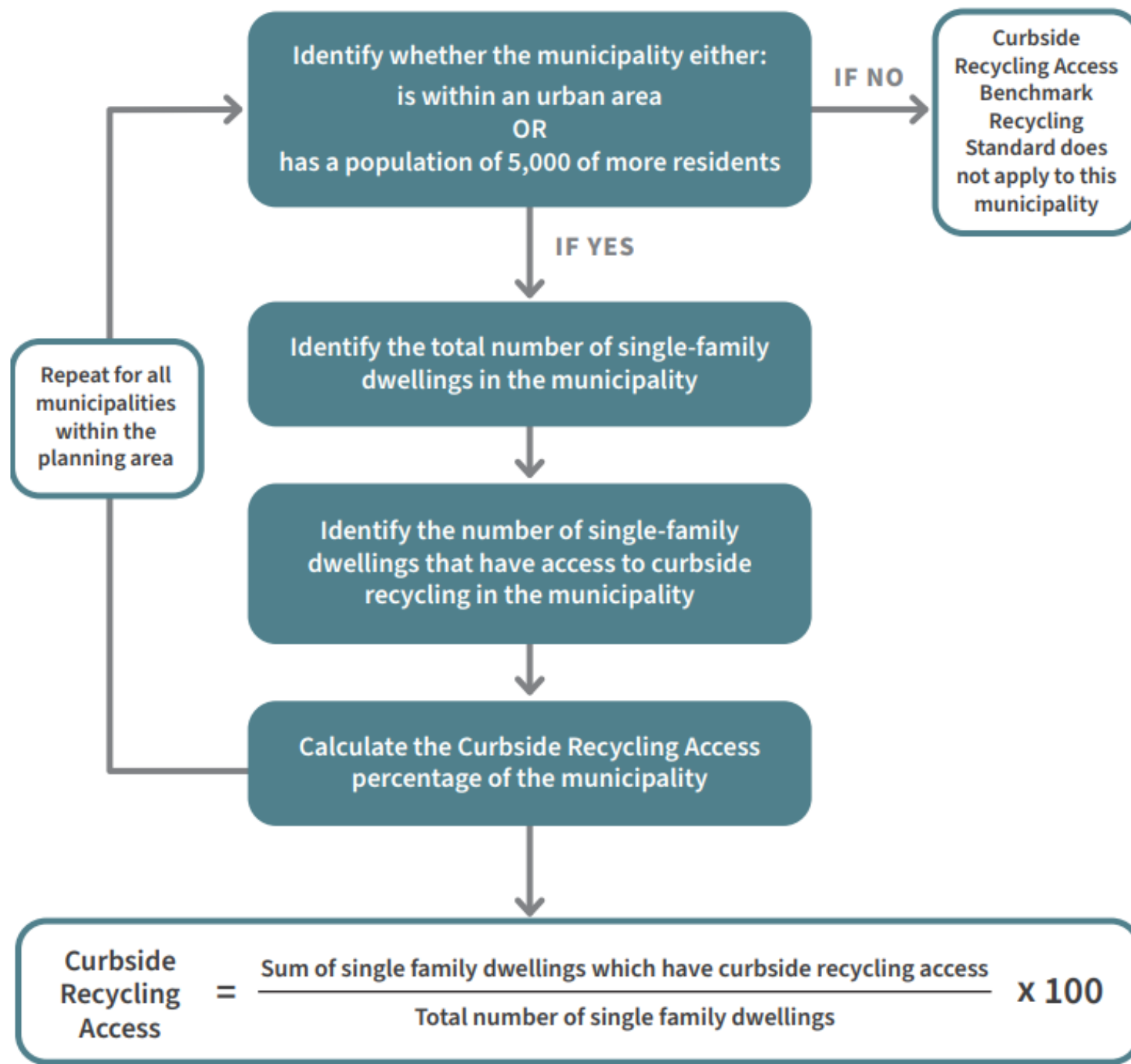
**January 1, 2032:** Counties will be required to provide a number of drop off locations according to the population of residents in the county without access to curbside recycling

## **CURBSIDE RECYCLING**

90 percent of single-family dwellings must have access to curbside recycling

## **DROP OFF RECYCLING**

Locations are available at least 24 hours per month



# Curbside Requirements

## Defining Curbside Recycling Access and Service Specifications

- Curbside recycling collected at least twice a month
- Curbside recycling provided by the municipality, or the resident has the ability to choose a curbside recycling hauler
- Mixed recyclables must be delivered to a compliant materials recovery facility
- If recycling and waste are commingled, loads must be delivered to a compliant facility for sorting
- Must include one or more recyclable materials, as determined by the county's material management plan, that are typically collected through curbside recycling programs



## Additional Considerations For Successful Curbside Recycling Programs

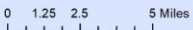
- How often do residents with curbside recycling access receive information about recycling benefits and rules?
- How easy is it for residents to find information about what is (or is not) recyclable?
- If residents have recycling access through a subscription based (opt-in) service, how can participation in this service be increased?
- Are there significant barriers to participating in curbside recycling service, even if residents have access? How can those barriers be reduced? (Barriers may include costs, registration process, language barriers, accessibility concerns, etc.)

# URBAN AREAS OF THE 2020 CENSUS



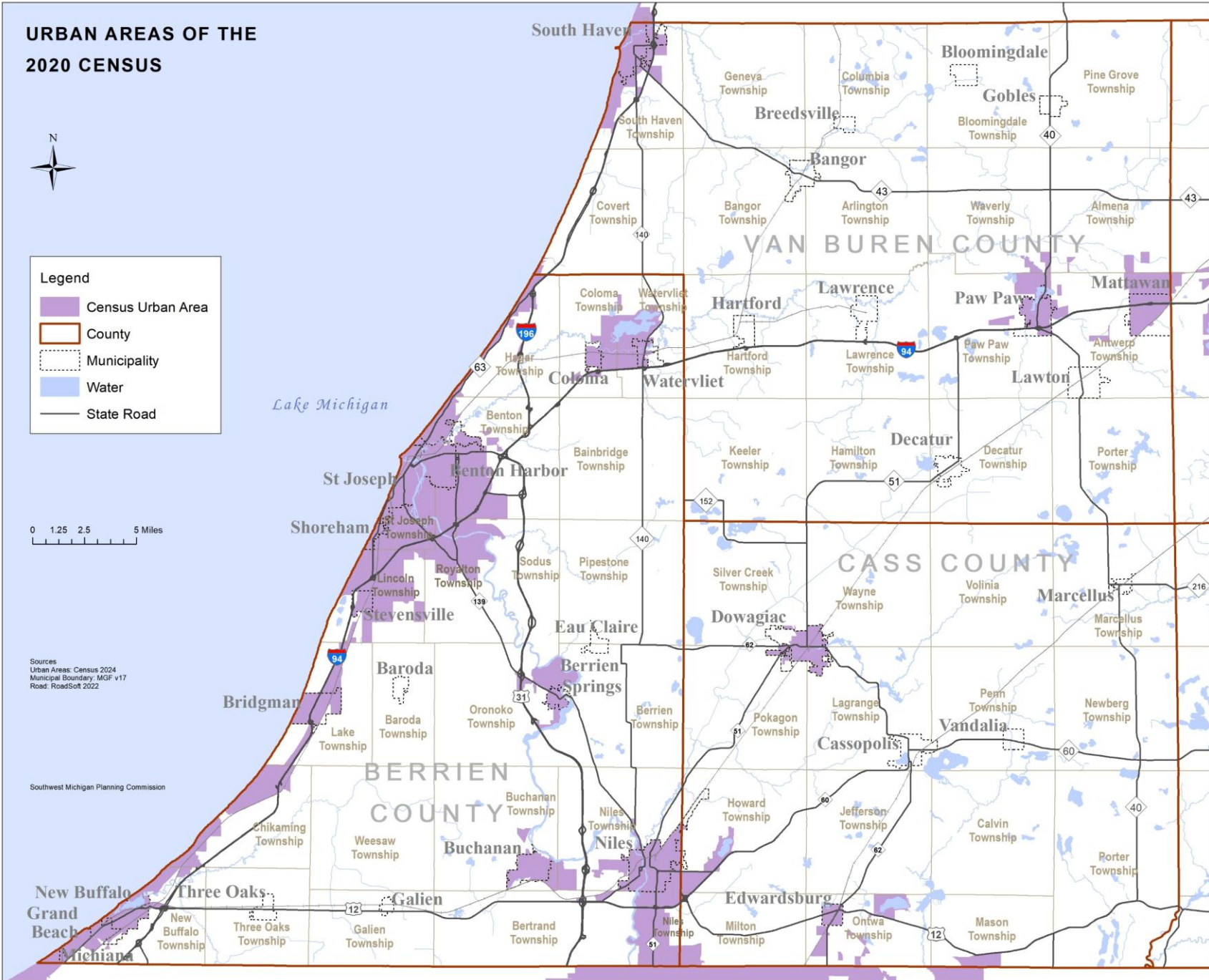
**Legend**

- Census Urban Area
- County
- Municipality
- Water
- State Road



Sources  
 Urban Areas: Census 2024  
 Municipal Boundary: MGF v17  
 Road: RoadSoft 2022

Southwest Michigan Planning Commission



# Curbside Requirements

Does not include subscription-based programs



County	Municipality	Percent of Municipality with the Urban Area	2028 Population-based Recycling Requirements	Existing Municipal-Contracted Curbside
Berrien	Benton Harbor City	95.06%	Y	
Berrien	Benton Township	34.67%	Y	
Berrien	Berrien Springs Village	100.00%		Republic
Berrien	Bertrand Township	1.10%		
Berrien	Bridgman City	92.73%		Lakeshore
Berrien	Buchanan City	87.20%		LRS
Berrien	Buchanan Township	2.76%		
Berrien	Chikaming Township	25.13%		
Berrien	Coloma City	88.46%		
Berrien	Coloma Township	18.91%	Y	
Berrien	Grand Beach Village	100.00%		Republic
Berrien	Hagar Township	13.72%		
Berrien	Lake Township	10.54%		Republic
Berrien	Lincoln Township	53.96%	Y	
Berrien	Michiana Village	100.00%		Republic
Berrien	New Buffalo City	90.59%		Lakeshore
Berrien	New Buffalo Township	17.89%		

Berrien	Niles City	89.10%	Y	Republic
Berrien	Niles Township	25.65%	Y	
Berrien	Oronoko Township	8.93%	Y	
Berrien	Royalton Township	27.73%	Y	
Berrien	Shoreham Village	100.00%		
Berrien	Sodus Township	6.69%		
Berrien	St Joseph City	100.00%	Y	Best Way Disposal
Berrien	St Joseph Township	100.00%	Y	Best Way Disposal
Berrien	Stevensville Village	87.47%		Best Way Disposal
Berrien	Watervliet City	56.53%		
Berrien	Watervliet Township	22.25%		

# Curbside

County	Municipality	Percent of Municipality with the Urban Area	2028 – Population-based Recycling Requirements	Existing Municipal-Contracted Curbside
Cass	Dowagiac City	74.09%	Y	
Cass	Edwardsburg Village	94.53%		Borden
Cass	Howard Township	6.75%	Y	
Cass	Mason Township	5.88%		
Cass	Milton Township	4.76%		
Cass	Ontwa Township	19.52%	Y	
Cass	Pokagon Township	0.38%		
Cass	Silver Creek Township	0.26%		



# Curbside

## Van Buren County

County	Municipality	Percent of Municipality with the Urban Area	2028 Population-based Recycling Requirements	Existing Municipal-Contracted Curbside
Van Buren	Almena Township	2.10%	Y	
Van Buren	Antwerp Township	3.04%	Y	
Van Buren	Covert Township	0.51%		
Van Buren	Mattawan Village	69.41%		
Van Buren	Paw Paw Township	6.35%	Y	
Van Buren	Paw Paw Village	86.74%		
Van Buren	South Haven Township	20.00%		
Van Buren	South Haven, City	90.27%		Best Way Disposal
Van Buren	Waverly Township	2.03%		

## Calculating the Number of Drop Offs Your Community Needs

- Determine the population of your county which does not have access to curbside recycling
- This may include (but is not limited to) residents in single-family or multifamily dwellings that do not have access to curbside recycling service
- Utilize data from the most recent federal decennial census

In counties with a population of **less than 100,000**:

At least 1 drop-off location **for each 10,000 residents** without access to curbside recycling.

$$\text{Number of Drop Offs} = \frac{\text{Number of residents without access to curbside recycling}}{10,000}$$

In counties with a population of **100,000 or more**:

At least 1 drop-off location **for each 50,000 residents** without access to curbside recycling.

$$\text{Number of Drop Offs} = \frac{\text{Number of residents without access to curbside recycling}}{50,000}$$

Berrien County = 154,316 population

**Berrien County (4 that meet criteria)**

Existing Drop Offs:

LRS – Niles

Orchard Hill – Watervliet

Republic Services – Stevensville

SEBCL Recycling Center – Buchanan

Cass County = 51,589  
population

# Van Buren County = 75,587 population

## **Van Buren County (8 that meet criteria)**

Existing Drop offs:

Antwerp Township

Arlington Township

Bangor Township (10 hours/month in  
winter, 20 hours/month in summer)

Bloomington Township

Covert Township

Decatur Township

Paw Paw Township

Pine Grove Township

South Haven Township





**Would you like to expand the benchmark recycling standards to ensure more access to the region? What would that look like? Would there be more drop-offs, a requirement for multi-family housing, etc.? Do you believe the benchmark recycling standards set by the State are sufficient?**

# Goal Setting - Diversion

- Set clear performance targets:
  - Reduce contamination by 5% annually until below **5%** total.
  - Increase diversion rates by 2% annually for the first five years.
- Promote partnerships with local manufacturers to reuse recycled materials in production.
- Promote Michigan's Materials Marketplace
- Encourage innovation and markets for hard-to-recycle items through support to the Nextcycle program.
- Encourage community-level baling of materials (e.g., cardboard) for resale instead of sending to MRFs.



**What other RECYCLING diversion objectives are needed? What is missing?**

# Public Awareness and Education

- Develop a regional public education campaign on what, where, and how to recycle.
- Use AI contamination technology for targeted messaging
- Hold public events to present recycling programs and goals.
- Encourage sharing community-wide recycling goals and progress.



**What other recycling awareness and education objectives are needed?  
What is missing?**



# Infrastructure and Access

- Add 4 comprehensive recycling drop-off sites per county (HHW, mattresses, foam, tires, recyclables, food waste, etc.).
- Establish additional manned recycling drop-off locations that provide county-wide access and are within 5 miles of every household.
  - Place roll-off recycling boxes in rural towns, hauling full loads to MRFs.
  - Use GIS mapping to identify ideal collection facility locations to maximize convenience and efficiency.



**What other recycling infrastructure objectives are needed? What is missing?**

# Policy and Funding

- Establish a consistent and ongoing funding source for recycling/food scrap diversion education and infrastructure
- Implement tax increases or dedicated millages to support recycling programs including school-based programs.
- Offer grants to schools and community organizations for recycling education and implementation.
- **Streamline hauler fee structures to make recycling cost-effective (single fee vs. multiple).**
- **Require single-hauler contracts in cities and villages, funded via taxes, for universal access.**
- Enact a County ordinance that requires all haulers offer recycling services to residents and provide data on collection quantities and where the recyclables are hauled to to promote transparency and build the public trust.
- **Eliminate plastic bags at retailers to reduce contamination in the recycling stream.**



**What other recycling policy and funding objectives are needed?  
What is missing?**

## **8. Public Comment**

## **9. Miscellaneous**

## **10. Adjournment**

*Next meeting will be held October 20, 2025 at 1:00 p.m. at Pokagon Band Community Center, 27043 Potawatomi Trail Dowagiac, MI 49047*

For questions about accessibility or to request accommodations, please contact Bekah Schrag at (574) 312-9148 or by email at [schragb@swmpc.org](mailto:schragb@swmpc.org)