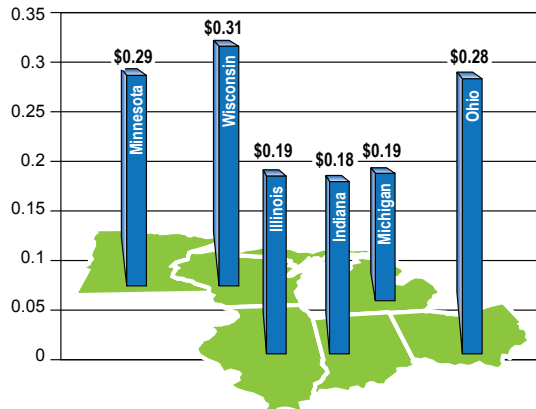


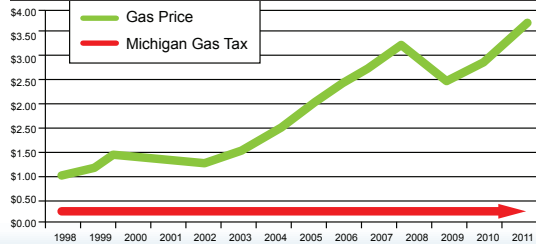
How does Michigan's gas tax rate compare?

Comparison of Gas Taxes



Michigan's state gas tax is one of the lowest in the Great Lakes region.

As gas prices go up, the gas tax stays flat



Michigan's state fuel tax has not increased since 1997.

"The typical Michigan motorist pays 2.4 cents in user fees per mile traveled, or a little over a dollar a day for Michigan's entire road and transit system."

Find more information at:



www.facebook.com/MichiganDOT

www.twitter.com/MichiganDOT

www.youtube.com/MichiganDOT

www.michigan.gov/mdot

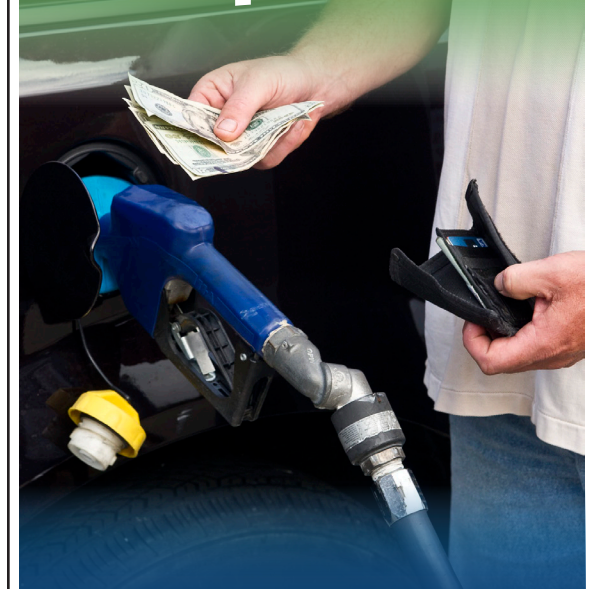
www.michigan.gov/drive



Providing the highest quality integrated transportation services for economic benefit and improved quality of life.

Michigan Department of Transportation

How Michigan FUNDS Transportation



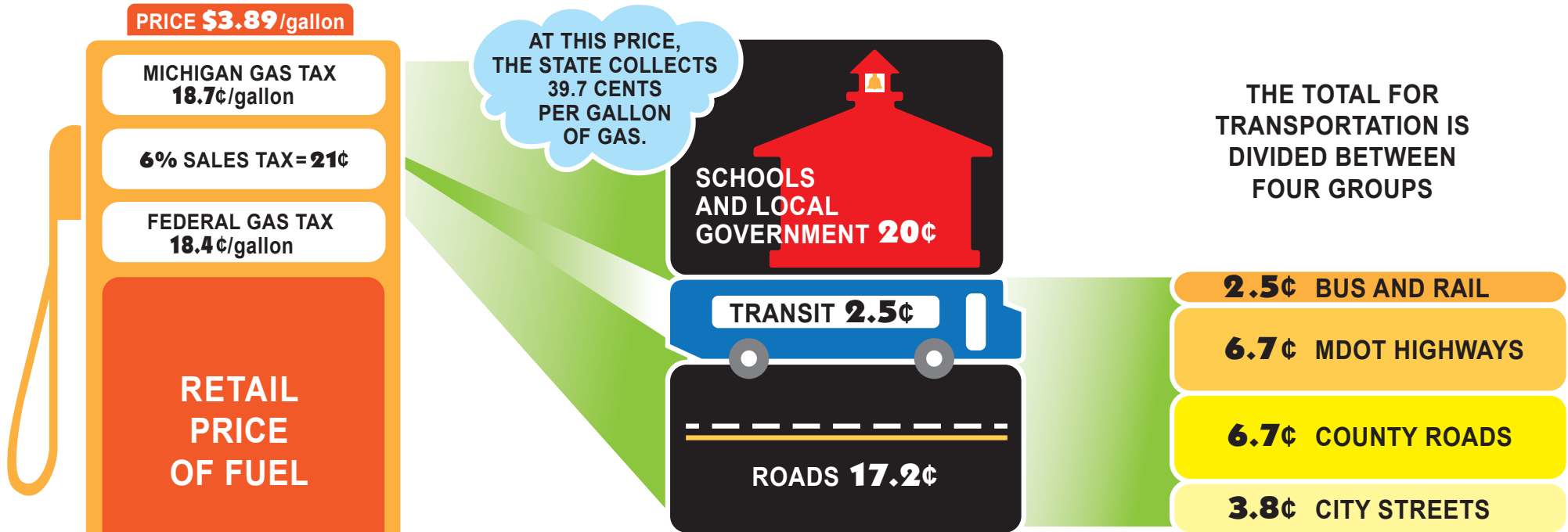
TRANSPORTATION FUNDING

Funding for the maintenance and preservation of Michigan's transportation system comes primarily from three sources: state gasoline and diesel fuel tax, federal gasoline and diesel fuel tax, and vehicle registration fees.



Distribution of Revenue from Gasoline Taxes in Michigan

THESE FIGURES ARE CALCULATED BASED ON A REPRESENTATIVE FUEL COST



FUEL TAXES

The 6% sales tax on fuel is dedicated to non-transportation purposes such as schools and support for local governments. A small portion of the sales tax on vehicle-related purchases goes to fund part of the transit program.

The state motor fuel tax is almost 19 cents per gallon on gasoline and 15 cents per gallon on diesel fuel.

“About half the state tax on gasoline goes to schools and local governments, not to transportation.”

MDOT HIGHWAYS

MDOT highways carry 50% of all traffic in the state and nearly 2/3 of the commercial traffic. MDOT uses its portion of state funding to match federal funds for transportation. MDOT works hard to invest these funds as efficiently as possible to:

- Maintain and preserve existing infrastructure.
- Provide support for local and regional transportation.
- Improve the safety and efficiency of Michigan’s entire transportation system.

* Note: Numbers have been rounded for simplicity.