

N 232,000

N 231,000

N 230,000

TISCORNIA

ST. JOSEPH YACHT CLUB

ST. JOSEPH MARINA

SILVER BEACH

WATERFRONT

UPTON

54E-2

BRIDGE-S

BAIT-2

EXIT

ST. JOSEPH RIVER

PORT STREET

PLEASANT STREET

SHIP STREET

LAKE BLVD.

STATE ST.

RR. (ABANDONED)

RR. (ABANDONED)

RR. (ABANDONED)

RR. (ABANDONED)

RR. (ABANDONED)

RR. (ABANDONED)

RR. (ABANDONED)

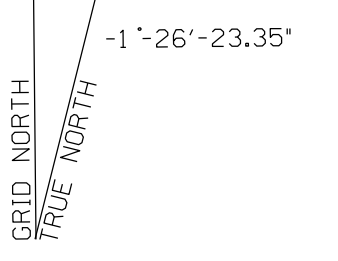
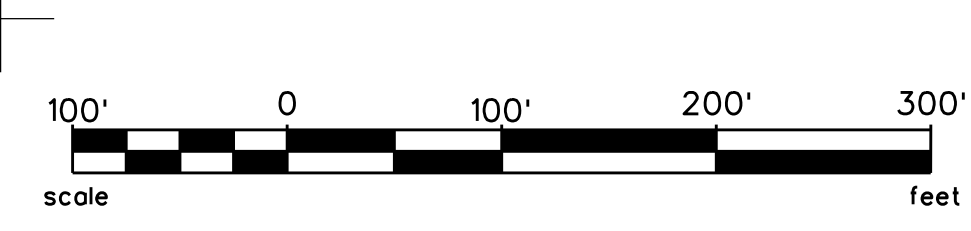
RR. (ABANDONED)

RR. (ABANDONED)

RR. (ABANDONED)

RR. (ABANDONED)

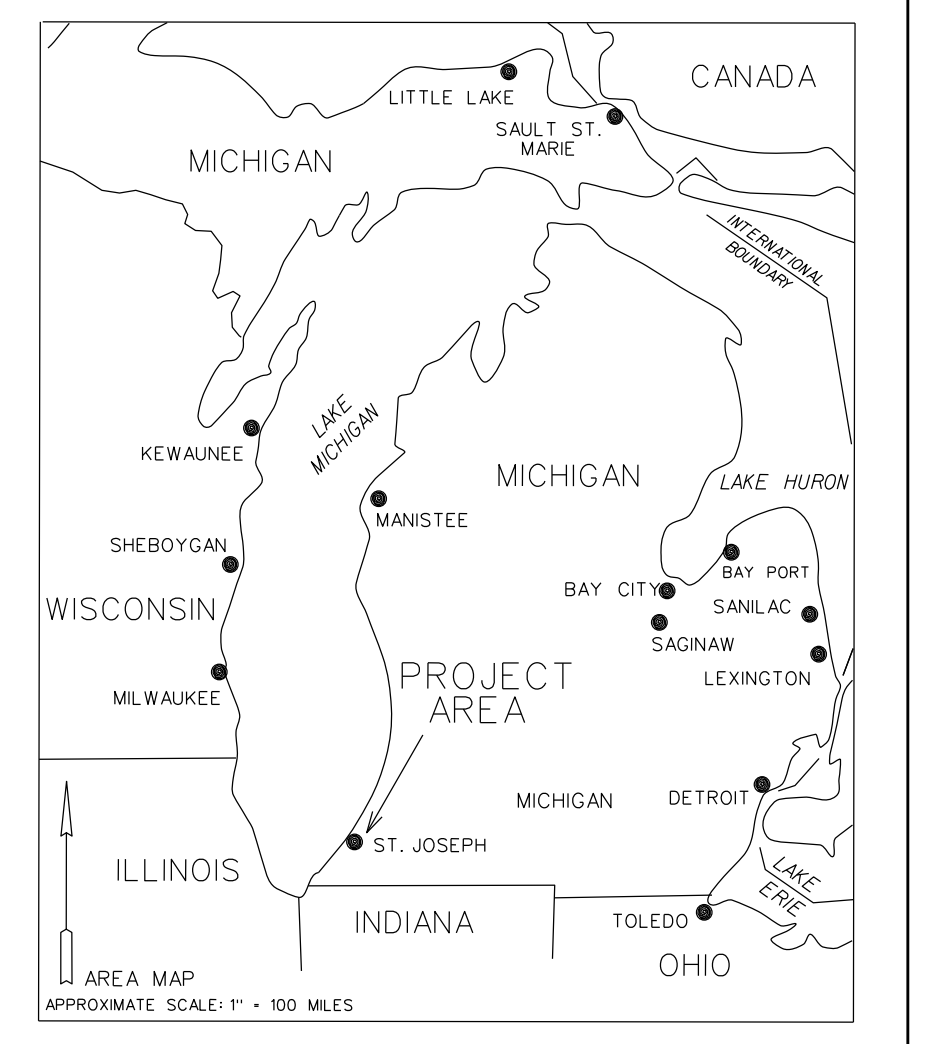
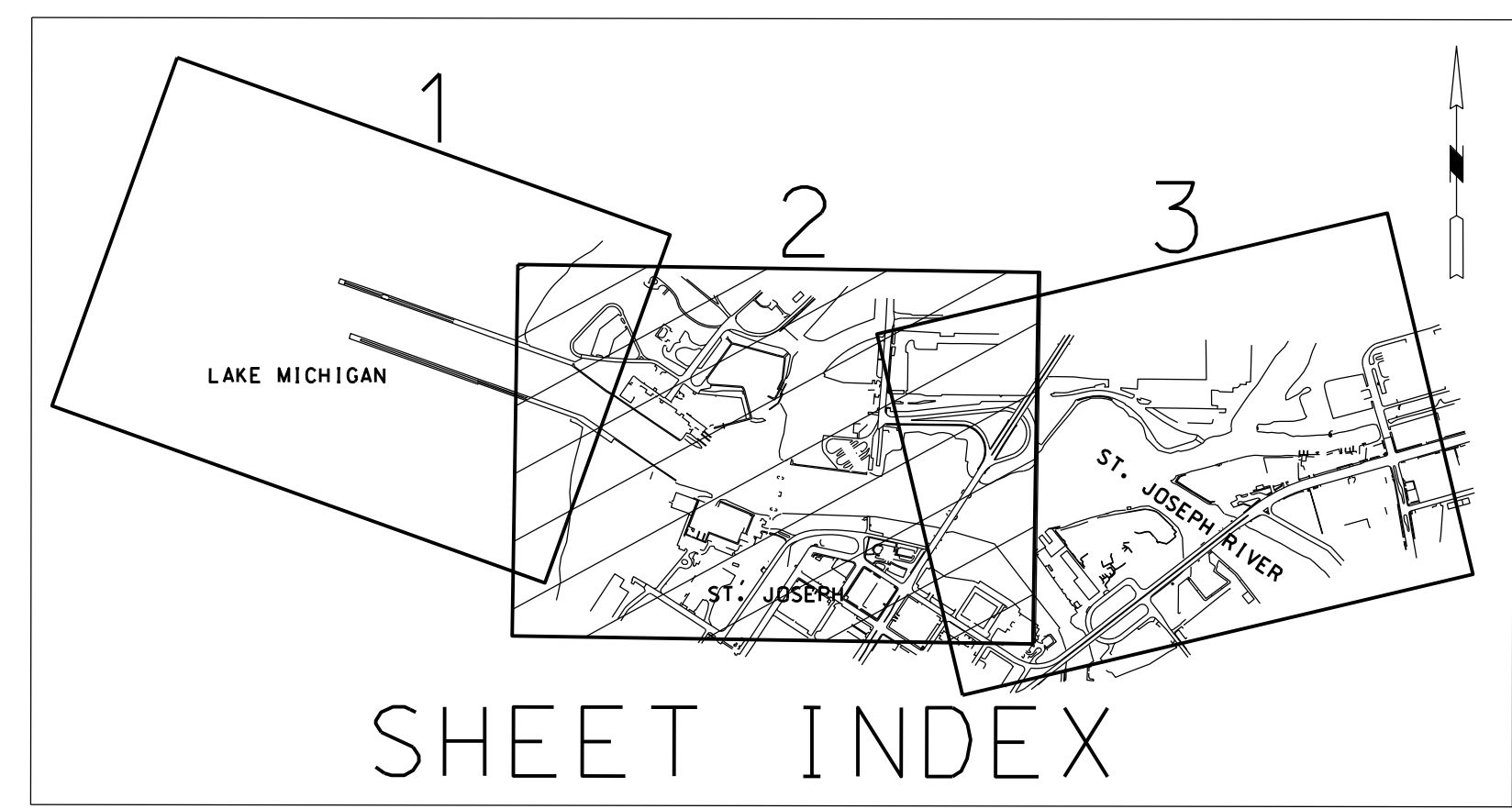
RR. (ABANDONED)



GRID SCALE FACTOR: 0.99999695  
GRID DIST. DIVIDED BY GRID SCALE FACTOR = GROUND DIST.

CENTER LINE T.P.			
T.P.	EAST X	NORTH Y	
CL-0	12,547,751.97	231,125.64	
CL-1	12,548,527.78	230,590.14	
CL-2	12,549,219.39	230,376.50	
CL-3	12,550,265.77	230,335.61	
CL-4	12,550,488.32	230,337.16	
CL-5	12,550,617.08	230,253.70	
CL-6	12,551,020.19	230,262.39	

CHANNEL LINE T.P.			
T.P.	EAST X	NORTH Y	
3	12,547,675.98	231,293.11	
4	12,547,790.31	230,971.52	
5	12,548,556.02	230,686.08	
6	12,484,499.53	230,494.21	
7	12,549,208.57	230,484.50	
8	12,548,828.56	230,359.36	
9	12,550,274.71	230,442.84	
10	12,549,262.37	230,267.21	
11	12,550,506.19	230,367.29	
12	12,550,256.82	230,228.37	
13	12,550,559.42	230,332.78	
14	12,550,407.60	230,295.32	
15	12,550,606.81	230,326.50	
16	12,550,459.98	230,289.39	
17	12,551,066.12	230,387.91	
18	12,550,627.35	230,180.90	
20	12,550,974.26	230,136.87	
PT. A	12,548,973.70	230,328.53	
PT. B	12,550,360.36	230,274.34	



ALL SOUNDINGS ARE REFERENCED TO I.G.L.D. 1985 FOR LAKE MICHIGAN, ELEVATION 577.5 FT. ABOVE MEAN SEA LEVEL AT RIMOUSKI, QUEBEC. HYDRAULIC CORRECTOR APPLIED 0.3 FT.

GRID SYSTEM BASED ON LAMBERT PROJECTION, MICHIGAN STATE PLANE COORDINATE SYSTEM, SOUTH ZONE (2113) 1983 NORTH AMERICAN DATUM, U.S. SURVEY FOOT.

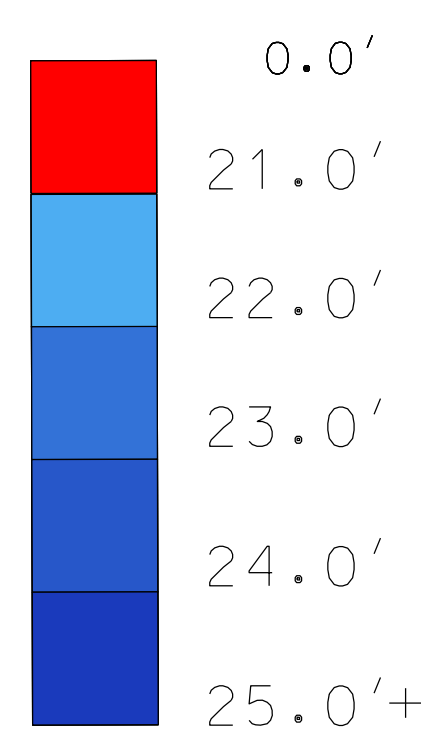
THE INFORMATION DEPICTED ON THIS MAP REPRESENTS THE RESULTS OF SURVEYS MADE ON THE DATES INDICATED AND CAN ONLY BE CONSIDERED AS INDICATING THE GENERAL CONDITIONS EXISTING AT THAT TIME.

VERTICAL WATER LEVEL READINGS WERE TAKEN FROM A FIXED GAUGE MARK ON A STEEL PILING IN THE COAST GUARD BASIN NEAR CROSS SECTION 10+00E IN ST. JOSEPH HARBOR, MI.

21 FT. PROJECT DEPTH

CHANNEL LIMITS SHOWN THUS: ---  
21 FT. CONTOUR SHOWN THUS: - - -

21' Legend



SURVEYED ON: 6 MAY 2015  
POSITIONING METHOD: DGPS, USING C. G. BEACON CORRECTION  
VESSEL: LAUNCH 3033

DATE OF PHOTOGRAPHY  
19 JULY 1992

NO.	DATE	REVISION	BY
<p align="center"><b>U.S. ARMY ENGINEER DISTRICT, DETROIT</b> CORPS OF ENGINEERS DETROIT, MICHIGAN</p>			
DRAWN BY	ST. JOSEPH HARBOR, MICHIGAN		
DESIGNED BY	CONDITION OF CHANNEL		
CHECKED BY	MAY 2015		
REVIEWED	GRAND HAVEN AREA OFFICE		
SUBMITTED	APPROVAL	RECOMMENDED	DATE
CHEF, PROJ. OPS. SEC.	CHEF, DTS BRANCH		
CHEF, COAST OPS. DIVISION	P.E.		
SCALE 1" = 100'		CADD FILENAME: JHC02G15.DGN	
DRAWING NUMBER		SHEET 2 OF 3	