

Galien River's Great Outdoors



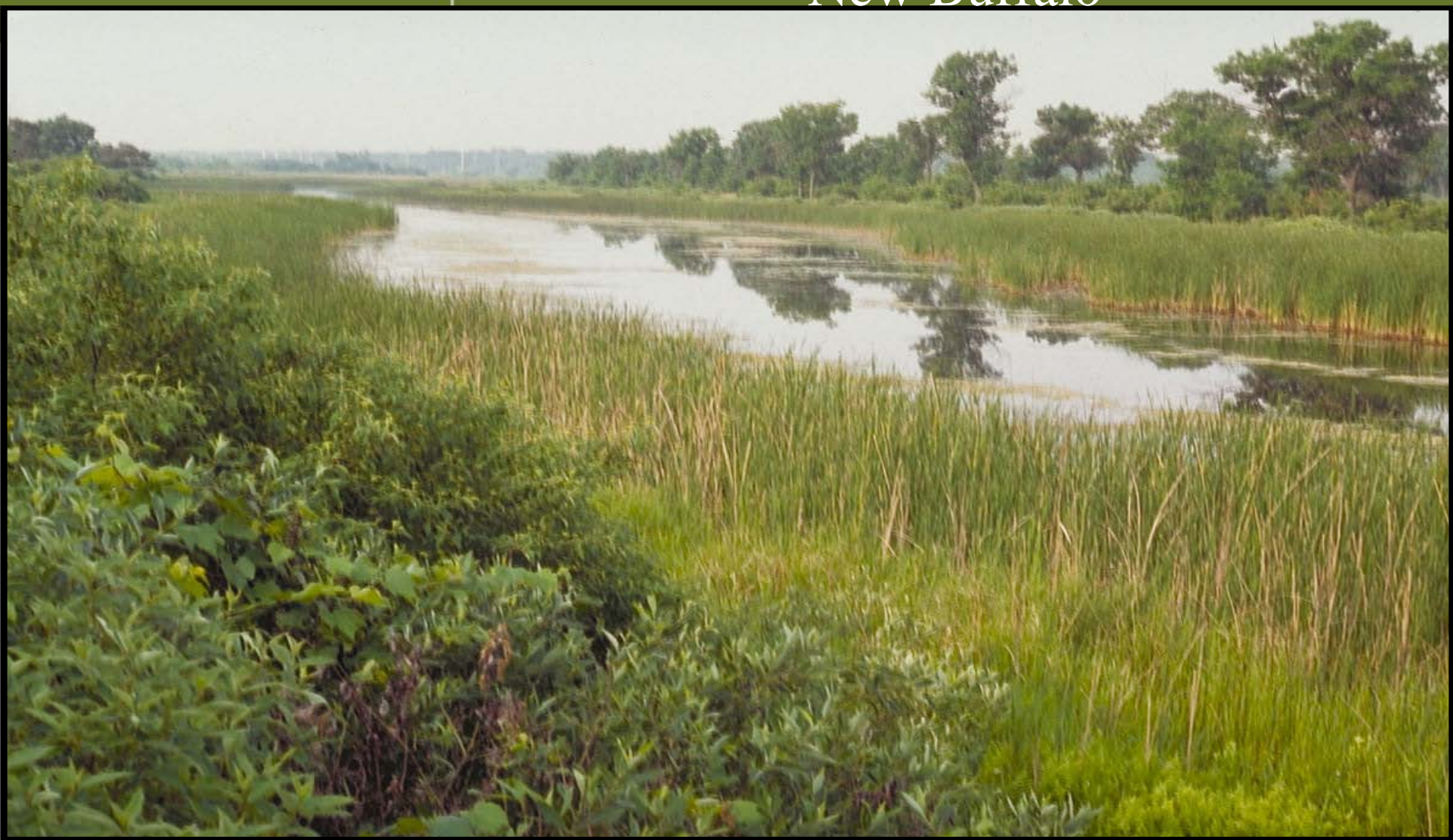
- Journey thru
 - Drowned river mouth
 - Coastal marshes
 - Beach maple forest
 - Emergent Forest
 - Oak Savanna
 - Peat bogs



THE CONSERVATION FUND

America's Partner in Conservation

Galien Marsh between Red Arrow and New Buffalo



Welcome to the Galien River Marsh Water Trail

The marsh represents an ecosystem that was once prevalent along the coast, but is now rare.

Great Lakes Marsh: Synchronized to the Rhythms of Lake Michigan

The marsh ecology and the plants and animals found there are influenced by the climate and water levels of Lake Michigan.

In addition to being closely linked to a great lake, a great lakes marsh has the following communities:



Additionally, the property includes:

1. A deep marsh with submerged plants, largely under water.
2. An emergent marsh with plants whose roots are in standing water, but whose leaves emerge from the water.
3. A wet meadow whose soil may be inundated with water, but at other times may be dry.
4. A shrub boundary between the marsh and the forest.
5. A dry forest containing oaks, hickory, black cherry and other trees.

Migration Rest Stop

The coast of Lake Michigan is a migration route for waterfowl, raptors and songbirds. As the birds migrate in the spring and fall, the marsh provides a resting and feeding area. The calm water, protected from storms, serves a vital function for many species.



Water Trail Tips

Length: 2 miles from the MDNRE boat launch to the City launch in New Buffalo.

Time: approximately 90 minutes

Conditions: The river current is slow and the route has few obstacles and no rapids. Most paddlers will have no problem paddling upstream. Marshy banks make stopping along the route difficult.

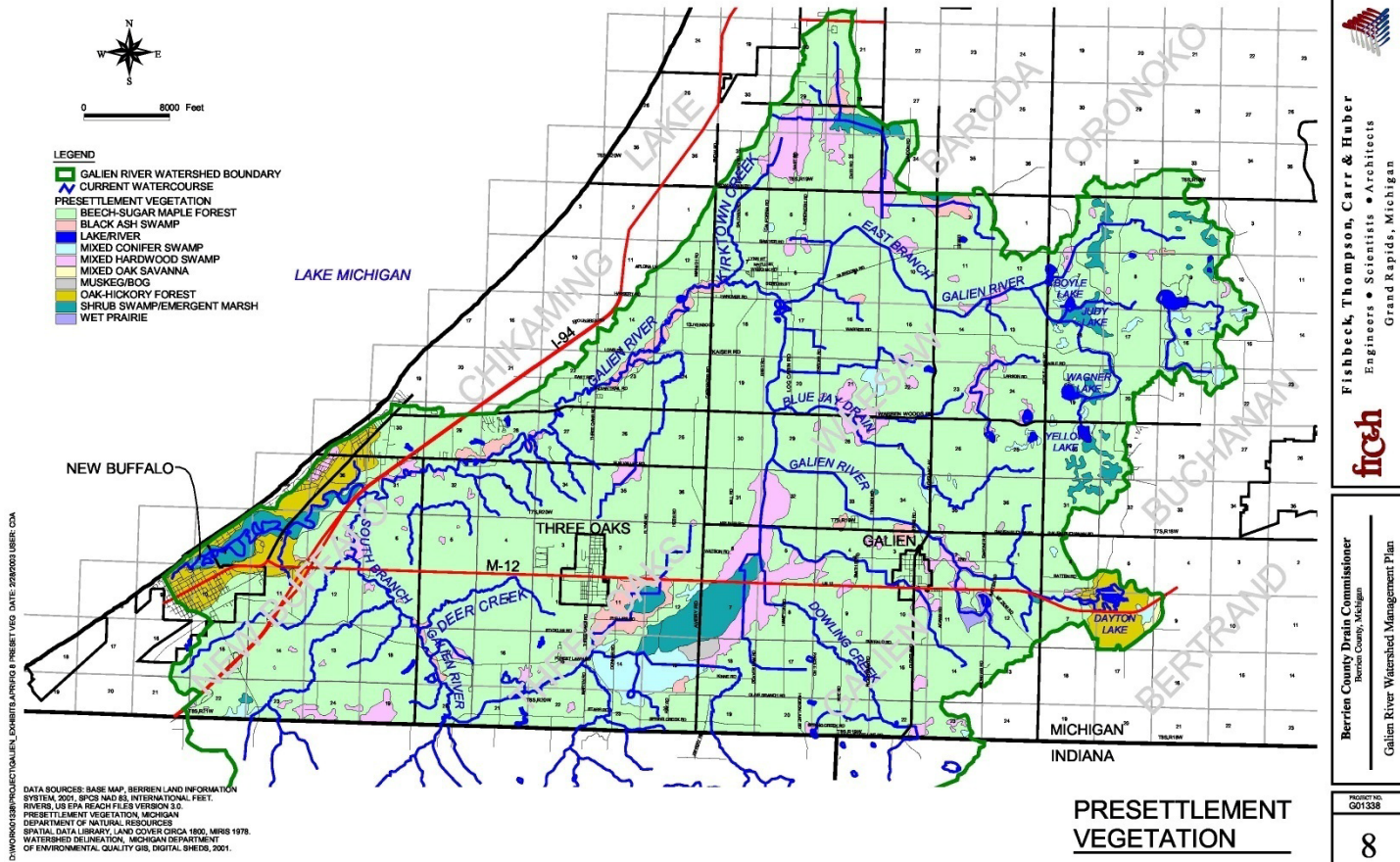
THE CONSERVATION FUND

America's Partner in Conservation

Coastal Marsh-Sawyer Blueberries



Pre-settlement Vegetation Dominant-green-beech maple



Warren Woods – beech maple forest



“Originally Weesaw Township was heavily timbered with beech, whitewood, & black walnut. The twp. was delayed many years in its settlement from this fact.”

1836-1880 History of Berrien and Van Buren Counties

Migratory and Neo-tropical Birds



- Between Avery Road and Three Oaks Road North of Spring Creek Road in Three Oaks Township



Dayton Lake-formed by glacier

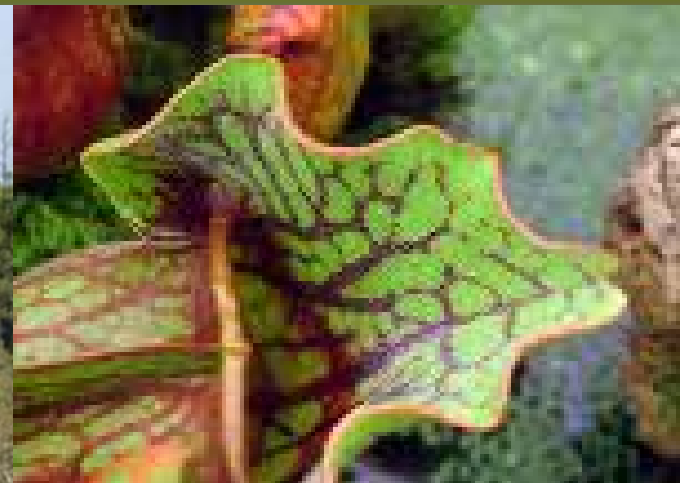


THE CONSERVATION FUND

America's Partner in Conservation

Oak Savanna New Buffalo and Dayton Lake



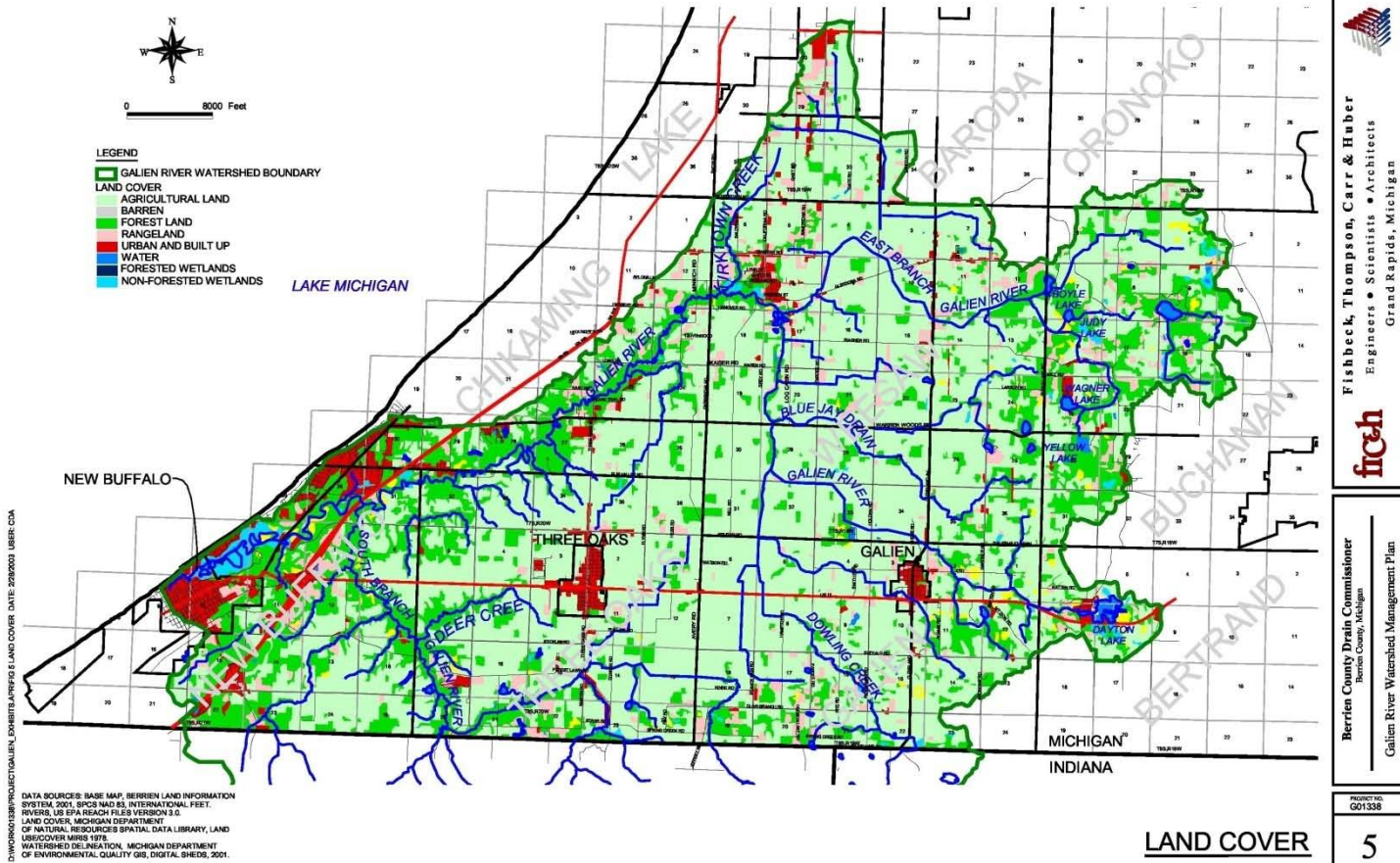


Cranberries Bog Flats between Galien and Three Oaks

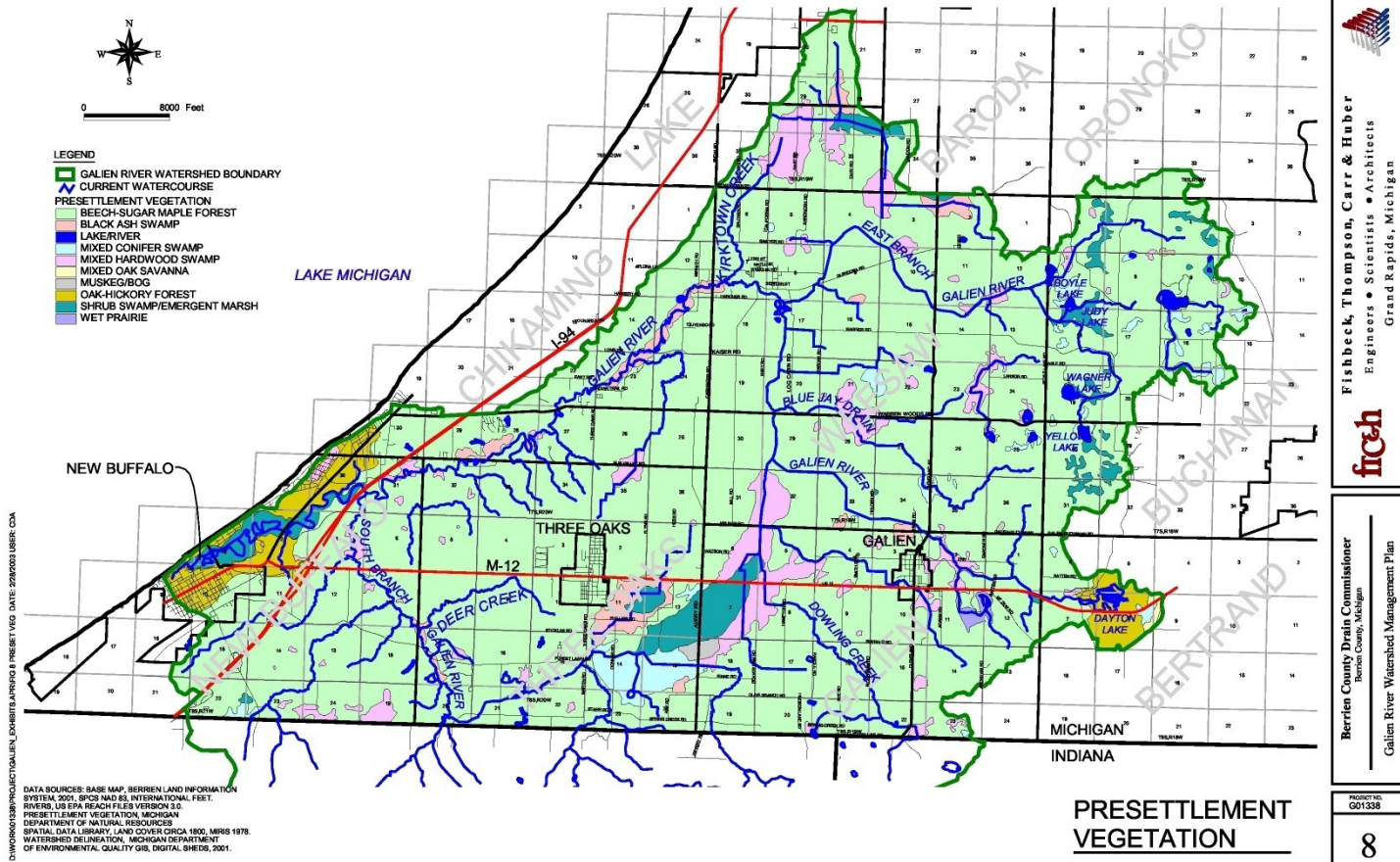


What has happened since settlement?

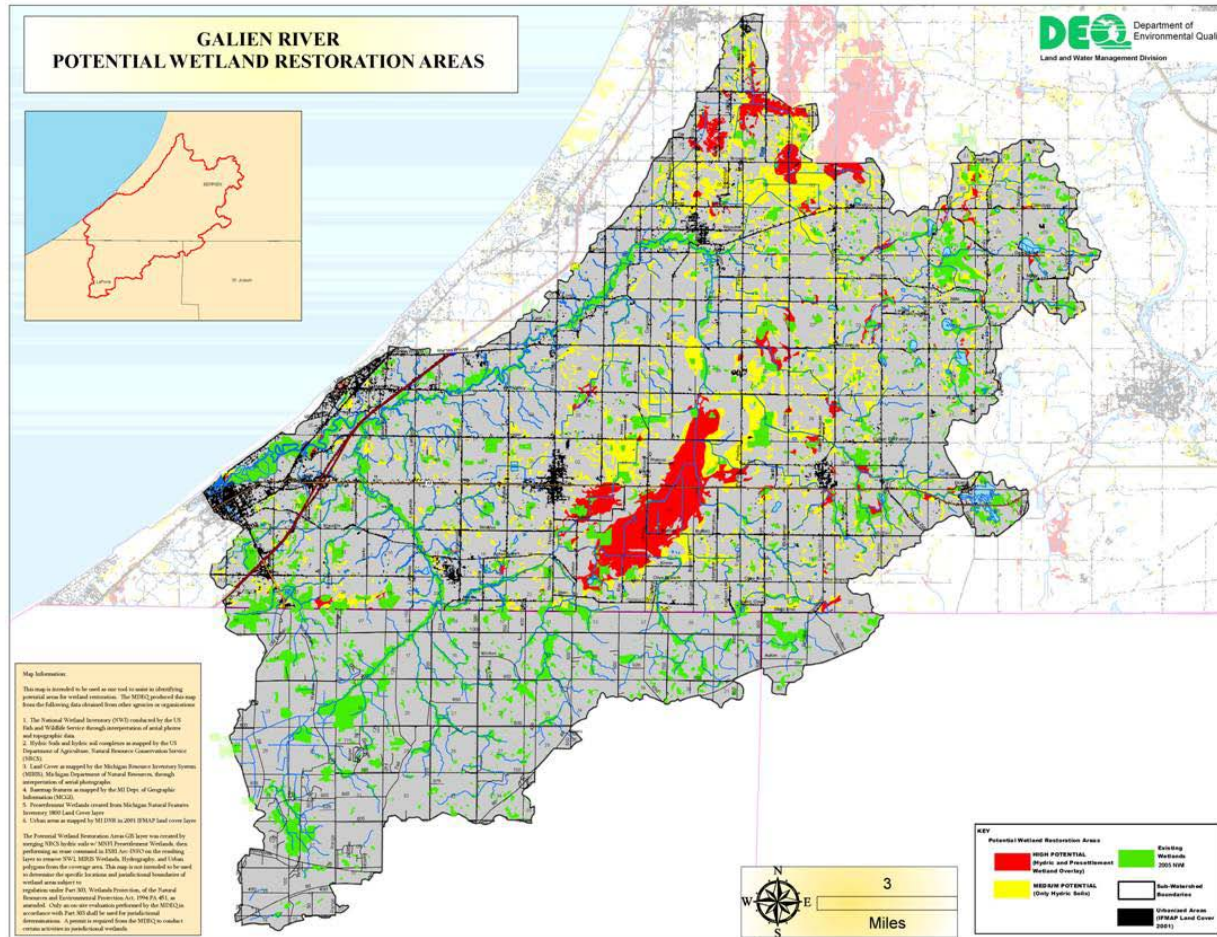




Pre-settlement Vegetation Dominant-green-beech maple



Landscape Level Wetland Functional Analysis





Questions?

Thanks for photos:

Twin Cities Camera Club

Berrien Springs Camera Club