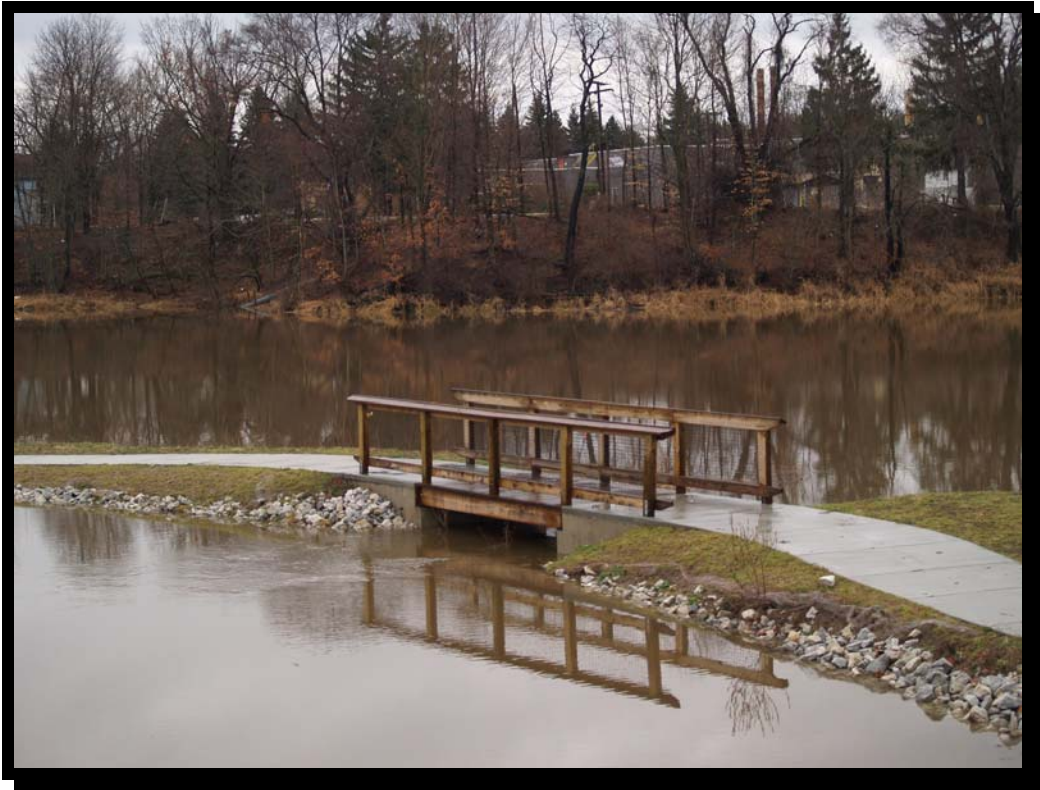


THE CITY OF BANGOR
Van Buren County, Michigan



Community Parks, Recreation, Open Space, and Greenway Plan
2008 - 2013

Southwest Michigan Planning Commission
Shelley Klug, Associate Planner
185 E. Main Street, Suite 701
Benton Harbor, MI 49022
March 2008

Photo Credits:

Maps created by Southwest Michigan Planning Commission
Aerial photos of parks retrieved from Microsoft Virtual Earth

TABLE OF CONTENTS

ACKNOWLEDGEMENTS	1
EXECUTIVE SUMMARY	2
COMMUNITY DESCRIPTION	3
Physical Characteristics	3
<i>Map of Van Buren County Potential Conservation Areas</i>	<i>6</i>
<i>Map of Bangor Potential Conservation Areas</i>	<i>7</i>
<i>Generalized Zoning Map - 2002</i>	<i>8</i>
Social Characteristics	11
Economic Characteristics	14
ADMINISTRATIVE STRUCTURE	16
City Management	16
Park Support - Volunteers and Affiliates	16
RECREATION INVENTORY AND ASSESSMENT	18
City Parks	18
<i>Map of City Park Locations</i>	<i>21</i>
Open Space and Greenways	22
Cultural/Historic Buildings and Property	22
School-Owned Facilities	22
Private Properties/Facilities	23
Regional Opportunities	23
Status Report of Previous DNR Grant-Assisted Projects	24
DESCRIPTION OF PLANNING PROCESS	25
Purpose of the Plan	25
Calendar of Meetings and Input Opportunities	26
Public Input and Participation	27
Parks and Recreation Survey Summary	29
GOALS AND PROJECT DESCRIPTIONS	35
Goals	35
Objectives and Project Descriptions	35
<i>Map of Proposed Projects</i>	<i>40</i>
ACTION PLAN	41
APPENDIX	53
<i>Public Notices – Visioning Session</i>	<i>54</i>
<i>Notice of Comment Period and Public Hearing – The Reminder</i>	<i>57</i>
<i>Notice of Public Hearing – South Haven Tribune</i>	<i>59</i>

<i>Affidavit of Publication for Public Hearing</i>	60
<i>Minutes of Council Meeting with Public Hearing and Plan Adoption</i>	61
<i>Resolution of Adoption</i>	63
<i>Letter to Regional Planning Agency</i>	64
<i>Letter to Van Buren County Planning Commission</i>	65
<i>Classification and Description of Parks Owned by the City of Bangor</i>	66
<i>Recreation Classification System</i>	67
<i>Facility Development Standards</i>	70
<i>List of Vegetation in Lion’s Park</i>	72
<i>City of Bangor Policy Governing City Parks</i>	73

ACKNOWLEDGEMENTS

The City of Bangor has a wonderful reputation for community pride and spirit. This reputation has been earned through the collaborative efforts and accomplishments of residents and leaders. It takes time to attend meetings, prepare assessments, do research, and participate in discussions with friends and neighbors to fully understand the needs and desires of a community. When these tasks are done with enthusiasm and care, the result is obvious. It took the participation and cooperation of numerous community leaders and residents to prepare this five-year Community Park, Recreation, Open Space and Greenway Plan and those efforts are greatly appreciated. In particular, we would like to acknowledge the following individuals:

Recreation Plan Steering Committee

*Jennifer Carpio
Charles French
Rosemary Insidioso
Gregory Moench
Ken Ratzlaff
Michael Selden
James Tanner*

City Government

*Cliff Waite, Mayor
Richard Sutherby, Mayor Pro-Tem
Mr. Michael Selden, City Manager
Linda Vaught, City Clerk
Cheri Parrish-Hamilton, City Treasurer
Teresa Wiles, Council Member
Gregory Moench, Council Member
Jennifer Carpio, Council Member
Phil Wiles, Council Member
Rosemary Insidioso, Council Member*

Bangor Downtown Development Authority

Rocky Johnson, President

Bangor Arts Council

Ken Ratzlaff

EXECUTIVE SUMMARY

One of the most rewarding experiences of preparing a five-year recreation plan is reviewing the previous plan and discovering that almost every one of the projects proposed in that plan has been completed. Knowing that the dreams of a community can indeed become reality provides the impetus to explore new ideas believing that, with continued community support, these new projects will also be completed and become a source of pride and delight for the City of Bangor.

As the steering committee reviewed the capital improvement plan in the 2002-2007 Recreation Plan to discuss the viability of remaining projects, it was noted that there were very few projects left to move forward into the 2008-2012 plan. The committee is pleased to build on these previous successes and believes that the new projects presented in the Action Plan reflect the vision and hopes of the community and will receive the support needed to bring them to reality.

A small community in a rural, agricultural landscape is often challenged by limited access to recreational opportunities and funding sources. The City of Bangor recognizes these challenges and has responded with keen interest and great effort to understand and meet the needs of every age group. To gather information to help understand these needs, the City distributed a citizen survey which revealed interesting results to two questions in particular: “Which of the following are your favorite activities?” and “Which of the following are your favorite amenities?” The results showed that both high school students (under age 19 years) and the community-at-large shared a great many answers in common. Although the survey was conducted in November and December, swimming, walking/jogging, fishing, and relaxing were in the top five favorite activities for both groups. Among the favorite amenities for both groups were restrooms, concerts, and family activities. These common interests across all ages provided a solid framework for the steering committee to work with knowing that the projects and plans they developed would meet the desires of Bangor’s residents.

It is with great pride that this Community Parks, Recreation, Open Space, and Greenway Plan is presented to the members of the community. Every effort has been made to protect the natural resources treasured by all, to provide opportunities for relaxation and recreation for every age group, and to enhance existing features that will be used and appreciated by residents as well as attract visitors to the area.

COMMUNITY DESCRIPTION

Physical Characteristics

Location

The City of Bangor (“Train City USA”) is located in the heart of apple country in north central Van Buren County in Southwest Michigan and is surrounded by Bangor, Arlington, Geneva, and Columbia townships. Although Bangor is a rural agricultural community, it is transected by highway M-43 which provides transportation connections with South Haven (and Lake Michigan) to the west and Kalamazoo to the east. Interstate 94, a major east-west highway, can be accessed approximately eight miles south of the City. This highway provides the principle route to and from Chicago, Illinois, and Detroit, Michigan with an approximate two hour drive to either metropolitan area. Other mid-size cities such as Grand Rapids and Kalamazoo Michigan, and South Bend, Indiana can be reached in approximately one hour or less via other easily accessible roadways.



Topography

Van Buren County is characterized by relatively flat terrain with some gently rolling hills. The City of Bangor is primarily flat with some slightly sloping areas, particularly near bodies of water.

Soils

As glaciers advanced southward from Canada and covered Van Buren County, they had a major impact on the terrain creating soil types varying widely in texture, permeability, stability, composition and other characteristics. The United States Department of Agriculture, Soil Conservation Service¹ identifies the soils in Bangor as part of the Capac-Riddles-Selfridge association. This association is described as nearly level to hilly, somewhat poorly drained and well drained, loamy and sandy soils on till plains, moraines, and lake plains.

The five predominant soil types found in the City are described in the following table. (It should be noted that these descriptions are generalizations of the soil in Bangor to provide a broad understanding of the soil conditions; site specific soil surveys are recommended for individual project needs.)

¹ Soil Survey of Van Buren County, Michigan 1984

Table 1 - Soil Types²

Name	General Characteristics
Thetford Loamy Sand	Nearly level with moderately rapid permeability. Available water capacity is low. Well suited for woodlands.
Selfridge Loamy Sand	Somewhat poorly drained with a moderate water capacity. Sub layer of loamy sand is intermixed with heavy clay.
Metea Loamy Fine Sand	Moderately undulating, well-drained soil. This soil is very susceptible to drought.
Riddles Sandy Loam	Slightly undulating soil with moderate permeability and a high water capacity. Subsoil is intermixed with clay.
Brems Complex	Soil has rapid permeability with a low water capacity. Soil covered heavily by streets parking lots and buildings.

Water Resources

The City of Bangor has access to a number of different water resources. Van Buren County has 133 inland lakes (43 are within ten miles of the City) and approximately 256 miles of rivers and streams. These water resources are not only havens for wildlife but provide valuable recreational resources as well. Some of the water resources in or near Bangor include:

- **Maple Creek:** *Maple Creek, located on the western edge of the City, joins the Black River in the northwest corner of the City.*
- **The Black River and Mill Pond:** *The South Branch of the Black River runs through the northern edge of the City where it was formerly impounded; resulting in the formation of the Mill Pond. As a popular fishing spot, especially when salmon and steelhead are spawning, and an area of natural beauty, this valuable water resource could be an important focal point for recreation in Bangor.*
- **Van Aucken Lake:** *This large inland lake, approximately five miles southwest of Bangor, provides public access and is another popular spot for boating and fishing.*
- **Saddle Lake:** *Located northeast of Bangor, this lake is a popular spot to view wildlife.*
- **Wetlands:** *There are several wetland areas in and around Bangor playing a key role in environmental quality and water protection by aiding flood prevention and supplying key habitat areas for wildlife.*



Black River Viewing Platform

² U.S. Dept. of Agriculture Soil Conservation Service, Soil Survey of Van Buren County, Michigan, 1980.

Vegetation, Wildlife, and Fish

In addition to the water resources, there are a number of beautiful natural resources in and around the City. Forested areas have a large variety of hardwood and softwood trees including Beech, Ash, Maple, Oak, Hickory, Red and White Pines. Vegetation along the stream banks of the Black River in Lion's Park includes Common buttonbush, *Viburnum trilobum*, Cardinal flower and Blue flag iris. A complete list of plants found on the stream banks and raingarden is available in the Appendix.

Wildlife and fish in the region are as equally diverse as the vegetation. White-tailed deer and wild turkeys are frequently seen near Bangor and are popular game for hunters. The area is also a major migratory route for a large variety of songbirds and waterfowl making it a popular destination for bird watchers. The Black River is a popular area for sport fishermen catching the steelhead and salmon coming up the river from Lake Michigan to spawn. Other lakes in the area are also excellent fishing spots for bass, bluegill and northern pike.

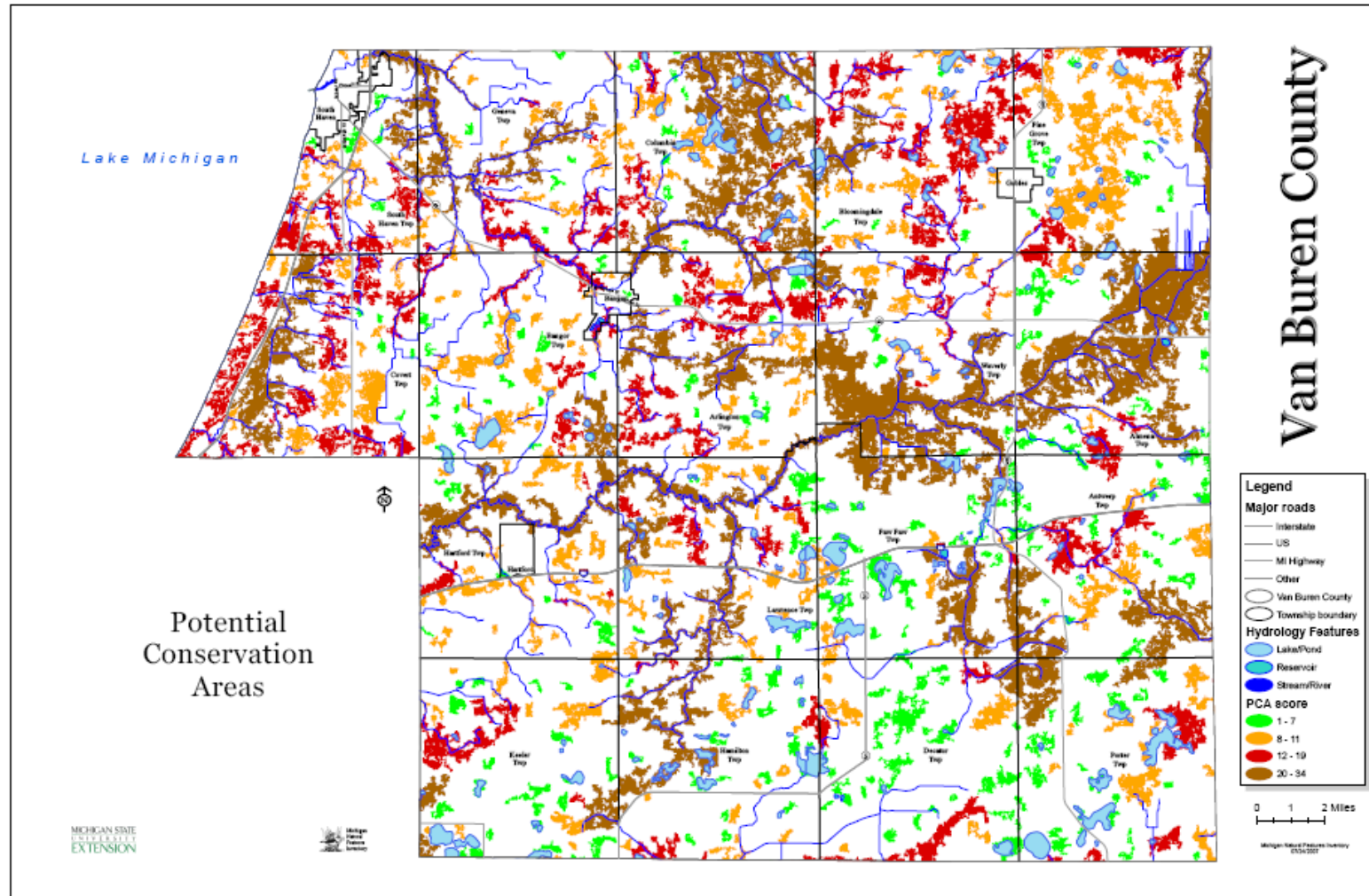
Potential Conservation Areas

Natural resource conservation is a fundamental component of a community's long-term environmental and economic health. Natural resource areas perform important natural functions such as water filtration and they provide recreational opportunities and wildlife habitat that enhance the overall vitality of a community. Potential Conservation Areas are defined as places on the landscape dominated by native vegetation that have various levels of potential for harboring high quality natural areas and unique natural features. In addition these areas may provide critical ecological services such as maintaining water quality and quantity, soil development and stabilization, pollination of cropland, wildlife travel corridors, stopover sites for migratory birds, sources of genetic diversity, and floodwater retention. *(Actual ecological value of these areas can only be truly ascertained through on the ground biological surveys.)*³ Potential Conservation Areas could provide the necessary connectivity to create a viable green infrastructure.

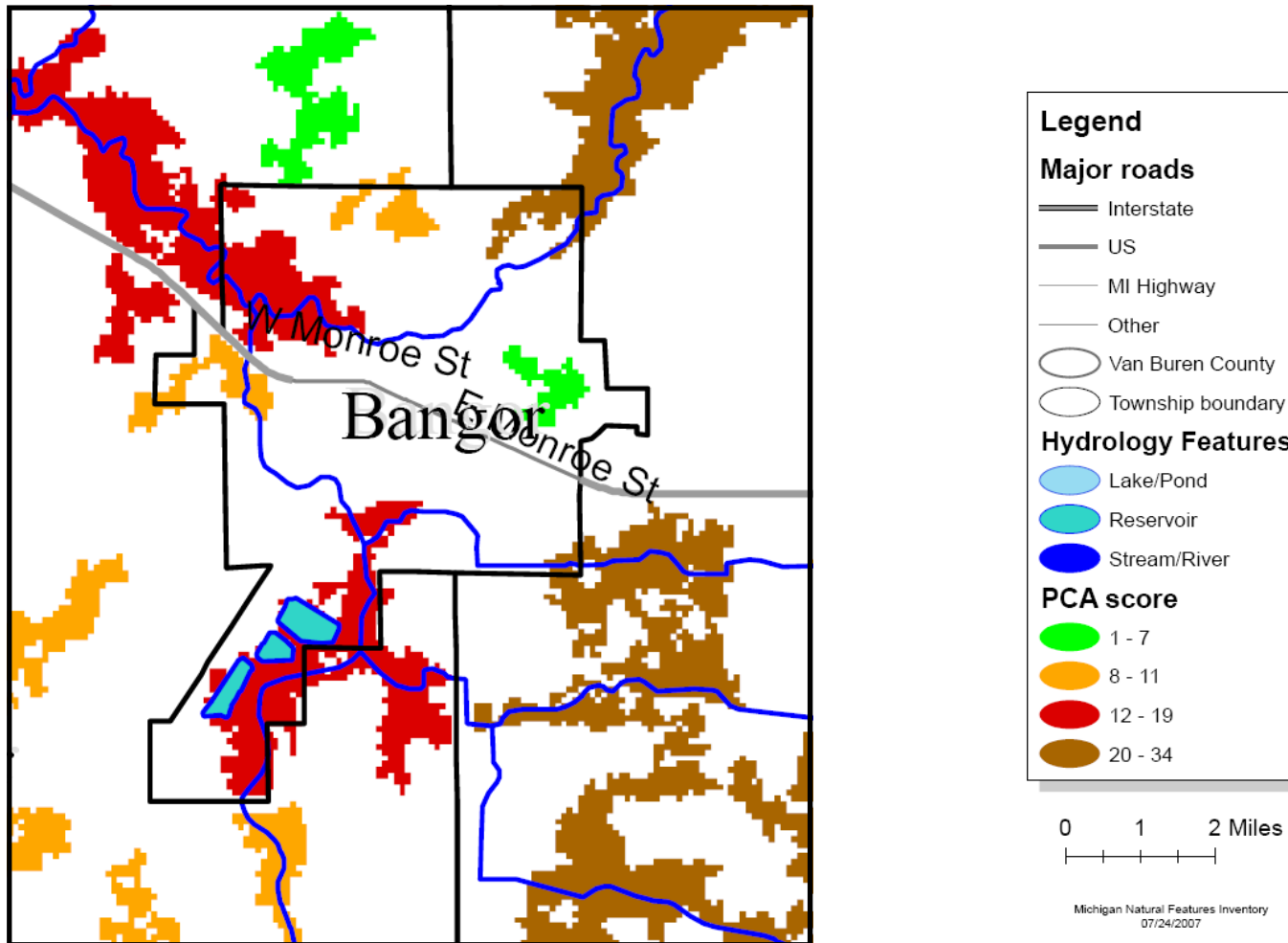
Through a process established by the Michigan Natural Features Inventory (MNFI) for identifying potential conservation areas, Potential Conservation Areas (PCAs) were identified for Van Buren County including the City of Bangor. The Van Buren County PCAs can be seen on the following map with an enlarged view of the Bangor area on the following page. Scoring criteria and additional information can be found at the website link below.

³ Potential Conservation Areas http://www.swmpc.org/downloads/growgreen/GI_finalreport.pdf

Map of Van Buren County Potential Conservation Areas



Map of Bangor Potential Conservation Areas

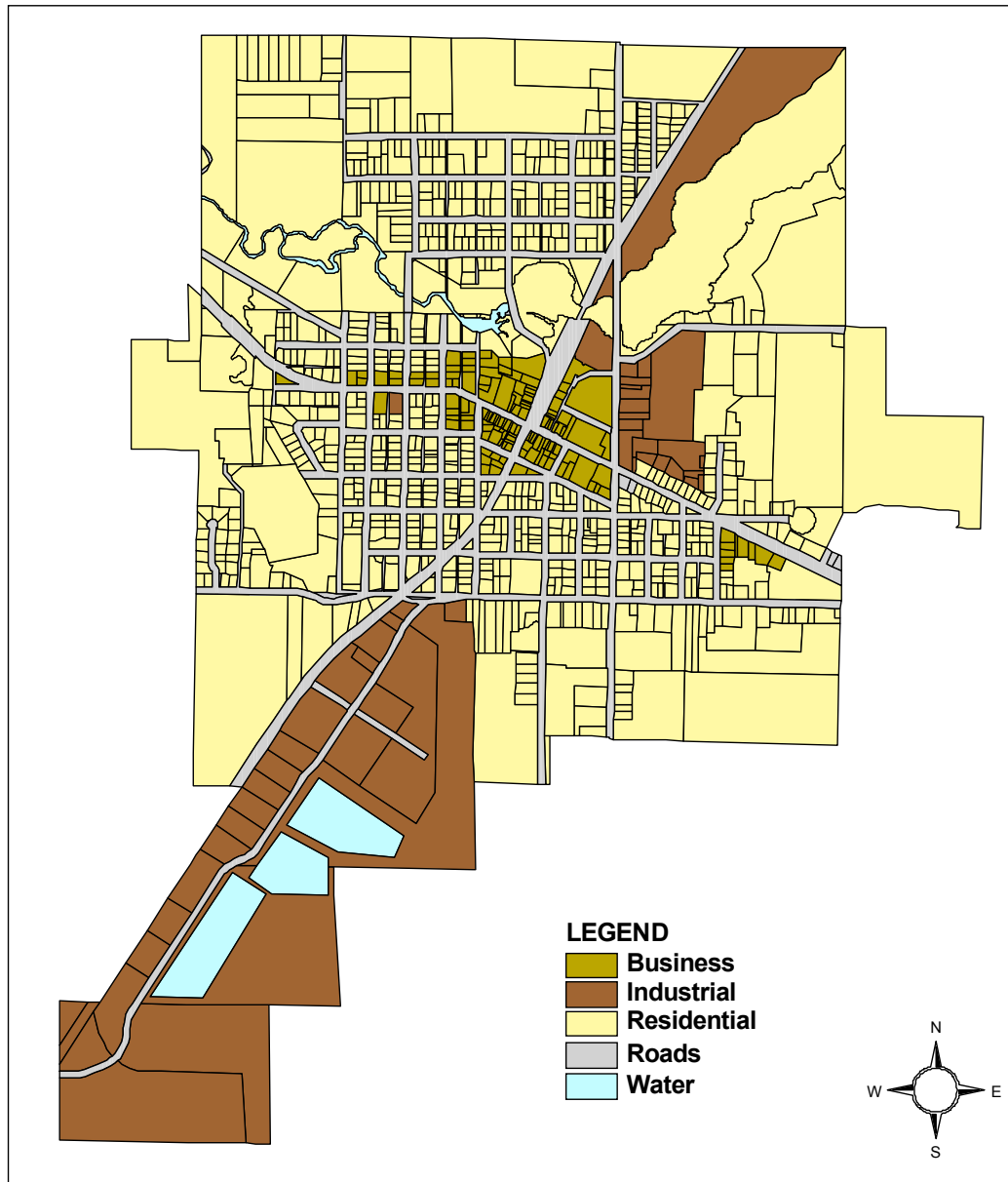


Zoning/Land Use

The City of Bangor's location as well as its natural features have contributed greatly to the way in which it has evolved and been developed. The residential sections of town are located in areas that can take advantage of the natural beauty of rivers and streams in the area while the business districts and industrial zones are more strategically positioned on or near the major transportation routes in the City. (See Map below.)

Generalized Zoning Map - 2002

City of Bangor



Base Map Source: Van Buren County Planning and Land Management

Map Prepared By:
Southwestern Michigan Commission
barkerc@swmicomm.org
January 2002

Residential: The main residential districts are located in two areas of the City; the area surrounding the former Mill Pond and the area adjacent to, and south of, M-43. The homes in these neighborhoods are generally older than the homes in other parts of the City. Although there are several single-family homes, this area is zoned multi-family residential. The areas zoned single-family residential are located in many areas throughout the community and are generally positioned on the outer portions of the City to accommodate future growth.

Industrial: The industrial sections are located along the Black River to the north, near the intersection of M-43 and Center Street, and along the railroad to the south. These areas were developed because of their convenient access to the main transportation features in the City such as the railroad and M-43, and the proximity to water which is used in many industrial processes.

Business: The business district is located in the center of the City along M-43. This area is comprised of a large variety of shops and service centers to meet the needs of the Bangor community. Business owners developed this area along the main road through town for ease of both the patrons visiting the shops and delivery of goods.

Floodplains: Low-lying areas near the Black River or Maple Creek may be at risk for flooding.

Climate

Lake Michigan (located approximately ten miles to the west) has a moderating effect on the prevailing westerly winds that influence Bangor's climate. The average temperature is 26° Fahrenheit in the winter with an average daily minimum temperature of 18° F. In the summer, the average temperature is 69° F and the average daily maximum temperature is 81° F. The annual precipitation is 38 inches with 56 percent falling between April and September. The average seasonal snowfall is 91 inches, with an average of 64 days that have at least 1 inch or more of snow on the ground. The growing season is approximately 180 days long.

Transportation

Understanding available transportation options is important to recreation planning as it impacts the ability of a community to attract visitors to local venues and the ability of area residents to access recreational opportunities in other areas. Bangor is within close proximity to major transportation routes providing access to large urban areas. M-43 is the primary road transecting Bangor providing a route east to Kalamazoo and west to South Haven. In 2000, M-43 had a 24-hour annual average traffic count of 7,200.⁴ Similar to many roads in the area, there is a noticeable increase in traffic on M-43 during the summer months. Interstate 94, which connects the major metropolitan centers, Detroit (150 miles east) and Chicago (125 miles southwest) can be accessed eight miles south of Bangor. Interstate 196 is accessible ten miles

⁴ Michigan Department of Transportation

west of Bangor providing access north to Holland and Grand Rapids and south to St. Joseph and Benton Harbor.

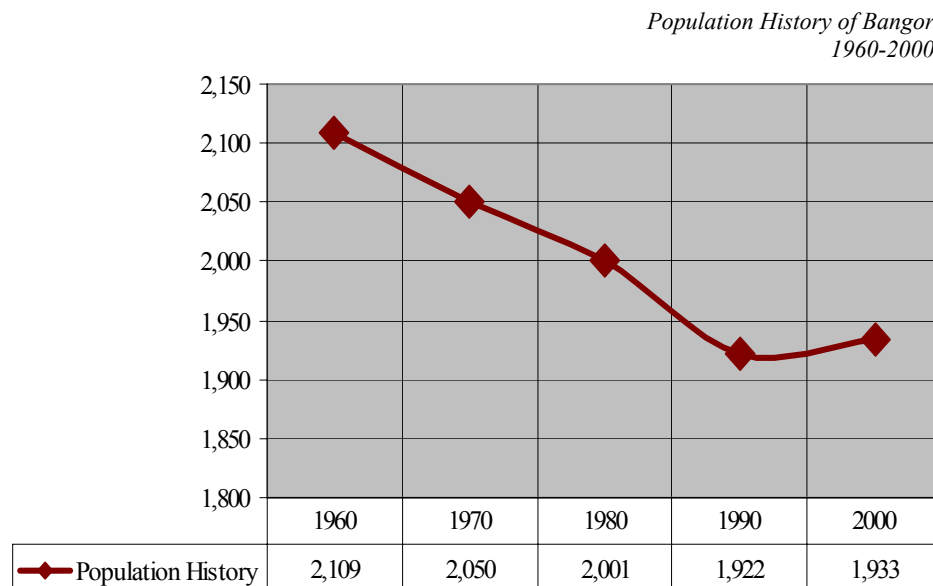
Rail service is a major mode of travel for people and products to and from the Bangor area. Amtrak stops at the Bangor Depot twice daily providing passenger service either north along the Lake Michigan shoreline and then east to Grand Rapids or southwest to Chicago.

Air travel is most easily accessed at the Kalamazoo International Airport. Other options include airports in South Bend, Grand Rapids, Lansing, Chicago and Detroit, all within 150 miles of Bangor. Benton Harbor and South Haven have airports available for non-commercial use.

Social Characteristics

Population

From 1960 to 1990, the City of Bangor experienced over 30 years of steady population decline before leveling off and showing a slight increase in the 2000 Census (+0.6%).



Although the City has seen very little growth, the areas surrounding Bangor have grown substantially. (See Table 2 below) This “ex-urbanization” (meaning the primary growth has been occurring outside of the city limits) has become very common not only in Michigan but in the nation as well. As the City considers recreation facilities and programs, it will be important to think about the residents of the surrounding areas in terms of their interest, use, and support of the parks and other recreation programs.

Table 2: Population of Bangor and Surrounding Areas⁵

Municipality	1980	1990	2000	% Change 1980-2000
City of Bangor	2,001	1,922	1,933	– 3.4%
Bangor Township	1,993	1,948	2,121	6.4%
Arlington Township	1,884	1,929	2,075	10.1%
Geneva Township	2,984	3,162	3,975	33.2%
Columbia Township	2,248	2,552	2,714	6.3
Van Buren County	66,814	70,060	76,263	8.9

⁵ U.S. Census Bureau, 2000

Age

Providing recreational opportunities for all segments of the population is an important aspect of a well-designed plan. As seen in the table below, the 35-59 year old age cohort represents the largest segment of the population (30%) in Bangor.

Table 3 - Age Distribution of Population in City of Bangor⁶

Age Cohort	Male	Female	Total	% of Total
< 5 years	79	77	156	8%
5-19 years	260	237	497	26%
20-34 years	178	191	369	19%
35-59 years	264	319	583	30%
>60 years	134	194	328	17%

Total Population City of Bangor – 1,933

The population of the surrounding communities is distributed similarly (see Table 4 below) indicating that the area is likely to follow the national forecasts of an increased number of “Baby Boomers” over the next two decades. It is notable that the 5-19 year old cohort is the second largest group (26%) in Bangor and comprises a similar percentage in the surrounding communities as well. These youth are an important demographic to be considered when developing a recreation projects and programs. The youngest cohort (under five years old) is only represented by a five-year span and thus appears to be the smallest segment. This cohort however, is also very important because it is indicative of the number of families who use the park and who have indicated, through surveys and public participation, their interest in family-oriented activities.

Table 4 – Age Distribution of Population by Percentage⁷

(Compares Bangor to Surrounding Areas)

Age Cohort	City of Bangor	Arlington Township	Bangor Township	Columbia Township	Geneva Township	Van Buren County
< 5 years	8%	6%	8%	8%	6%	7%
5-19 years	26%	24%	23%	23%	26%	24%
20-34 years	19%	15%	19%	17%	17%	17%
35-59 years	30%	39%	32%	35%	34%	36%
>60 years	17%	16%	17%	18%	16%	16%

⁶ U.S. Census Bureau, 2000

⁷ U.S. Census Bureau, 2000

Persons with Disabilities

The City of Bangor has historically shown its commitment to creating barrier-free environments in its parks and recreational facilities through previously completed projects as well as current and future plans. One of the activities undertaken by the Steering Committee was a barrier-free assessment of the City's parks. The majority of the parks have at least some barrier-free areas and most the parks have current projects in the Action Plan that involve improving accessibility. (Synopsis included in the Recreation Inventory and Assessment.)

Table 5 – Disability Status of the Civilian Non-Institutionalized Population⁸

	Total	Percent of Total
Population 5 to 20 years	529	
With a disability	55	10%
Population 21 to 64 years	981	
With a disability	310	32%
Population 65 years and over	266	
With a disability	143	54%

⁸ U.S. Census Bureau, 2000

Economic Characteristics

Income

Although the City of Bangor had a greater increase in Median Household Income and Per Capita Income from 1989 to 1999 than Van Buren County and many of the surrounding communities, residents still have lower income levels than most residents in the area.

Table 6 – Income Levels⁹

Median Household Income 1989-1999			
	1989	1999	% Change
Bangor City	\$16,441	\$28,165	24%
Arlington Township	\$25,694	\$36,847	10%
Bangor Township	\$33,608	\$35,375	28%
Geneva Township	\$22,750	\$34,900	15%
Columbia Township	\$23,389	\$34,389	12%
Van Buren County	\$25,491	\$39,365	16%
Per Capita Income 1989-1999			
	1989	1999	% Change
Bangor City	\$8,693	\$14,925	24%
Arlington Township	\$10,527	\$16,349	16%
Bangor Township	\$9,556	\$16,759	26%
Geneva Township	\$9,101	\$16,499	28%
Columbia Township	\$9,637	\$15,015	17%
Van Buren County	\$11,233	\$17,878	19%

Employment

The residents of Bangor continue to be employed in a relatively diverse market but there were a number of changes in the distribution of employment between the 1990 and the 2000 Census. Several categories, “Agriculture”, “Construction”, “Retail”, and “Other” constituted a smaller percentage of employees in 2000 than in 1990. Manufacturing (includes durable and non-durable goods) which was the dominant employment category in 1990, grew from 25 percent to 28 percent but is now equal with the “Professional” (includes finance, health and education) category which grew from 19 percent in 1990 to 28 percent in 2000.

Table 7 - City of Bangor Employment¹⁰

Major Categories	1990	2000
Agriculture	9%	4%
Construction	7%	6%
Manufacturing	25%	28%
Retail	18%	15%
Finance, Professional, Education	19%	28%
Other (<i>Transportation, arts, and public administration</i>)	22%	13%

⁹ U.S. Census Bureau, 2000

¹⁰ U.S. Census Bureau, 2000

Unemployment

The City of Bangor is a unique and comfortable place to live and raise a family. However, there has not always been a large number of job opportunities nearby which is one reason that Bangor has a slightly higher average unemployment rate than surrounding areas. With recent growth and expected new developments the prospect of new jobs and economic growth in the area is beginning to appear more promising. Bangor recognizes the importance of community parks, recreation, open space and greenways as amenities that will increase the quality of life for its residents and provide resources for tourism revenue.

Table 8: Average Annual Unemployment Rates¹¹

	1999	2000	2001
Bangor City	8.8%	8.9%	11.4%
Bangor Township	6.4%	6.4%	8.3%
Arlington Township	4.4%	4.4%	5.7%
Geneva Township	4.3%	4.3%	5.6%
Columbia Township	7.0%	7.1%	9.2%
Michigan	3.8%	3.6%	5.0%
United States	4.2%	4.0%	4.6%

Poverty Status

The poverty status of the City of Bangor and surrounding communities has improved since 1989 although the level of poverty is still considerably higher than desired.

Table 9 - Individuals Below Poverty Level¹²

	1989	1999
City of Bangor	29%	16%
Arlington Township	17%	11%
Bangor Township	21%	12%
Geneva Township	15%	10%
Columbia Township	20%	18%
Van Buren County	15%	11%

Housing

At the time of the 2000 Census, there were 804 housing units in the City of Bangor with an occupancy rate of 89.8 percent. A percentage of the vacancy is due to the presence of homes used only occasionally for recreational and seasonal purposes. Owner-occupied units represent 63.7 percent of the housing units in the City and approximately 34 percent are occupied by renters.

¹¹ Source: Michigan Department of Career Development—Labor Market Information www.michlimi.com

¹² U.S. Census Bureau, 2000

ADMINISTRATIVE STRUCTURE

City Management

The City of Bangor is organized under a Council-Manager form of government, and provides a full range of services including general government activities, public safety, public works, and recreation. The City Council sets policy and directs the staff to take action in support of those policies. The City Manager is the direct link between the Council and the City's operations, and is responsible for the day-to-day administration of the City. In addition to the manager, the City employs a clerk, a treasurer, and a receiving clerk. The City Council consists of a mayor, a mayor pro-tem, and five council members. (See organizational structure chart on following page)

The City parks are maintained by the City's Department of Public Works (DPW). The DPW has seven full-time employees. Park maintenance and recreation activities received approximately \$135,000 of the City's \$901,000 general fund budget in fiscal year 2006-2007. Of this, about \$105,000 was for capital improvement projects. Park maintenance and recreation activities are funded entirely from general tax levies.

There is currently no formal parks council in the City of Bangor. It is suggested that the City establish such a council in the future in order to more efficiently manage recreation opportunities within the City. Options for the City Council include establishing either an Advisory Board (with no power to take action on its own authority) or a Parks Council that will actually oversee the parks portion of the budget and have sole discretion over parks and recreation activities. Further, it is recommended that the Parks Council be established in cooperation with Bangor Public Schools.

Park Support - Volunteers and Affiliates

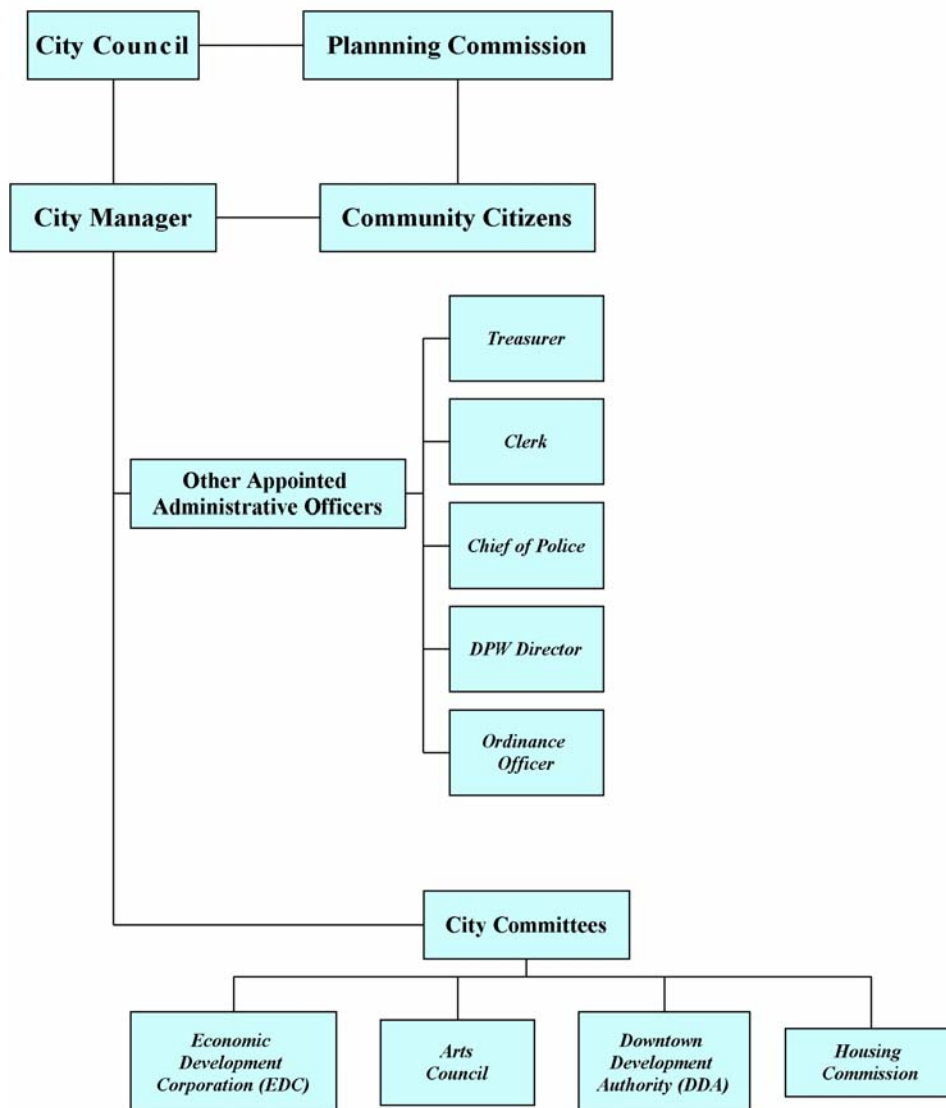
The Bangor Downtown Development Authority (DDA), created in 1971, is a committee that exists in conjunction with the city government. The purpose of the DDA is to correct and prevent deterioration in the business districts; to encourage historic preservation; to authorize the acquisition and disposal of interest in real and personal property; to authorize the creation and implementation of development plans in the districts; and to promote the economic growth of the districts. It is the opinion of the DDA that recreation activities have the potential to make Bangor a "drive to" rather than a "drive through" community. The DDA has an annual budget of about \$90,000 of which a portion may be used to support recreation in the downtown area.

The Bangor Arts Council was founded by the City Charter. The mission of the Arts Council is to promote mutual understanding and respect among all citizens for the arts. Arts Council activities are not funded by the City's general fund budget. The Arts Council's \$12,000 budget is funded entirely by fundraisers and donations. Activities funded by the Arts Council include a

craft show at the Bangor Apple/Harvest Festival each October, which is attended by approximately 4,000-6,000 people.

The Bangor Public Schools also houses various recreation and arts opportunities. Adult and student recreation programs, special activities, and the Bangor Arts and Communications Academy are all sponsored by the Bangor Public Schools. Funding for the Athletic Program is included in the school district's operational budget.

City of Bangor Organizational Chart



RECREATION INVENTORY AND ASSESSMENT

Members of the steering committee volunteered to complete a standardized form assessing the barrier-free accessibility and the overall condition of each of the parks. The assessment results show that most of the park facilities meet at least some of the accessibility standards. Members also made notes regarding the current amenities and possible future improvements or additions. The barrier-free status of the parks is ranked as follows:

- 1=none of the facilities/park areas meet accessibility guidelines
- 2=some of the facilities/park areas meet accessibility guidelines
- 3=most of the facilities/park areas meet accessibility guidelines
- 4=the entire park meets accessibility guidelines
- 5=the entire park was developed/renovated using the principles of universal design

City Parks

Kiwanis Park

This 5.5 acre neighborhood park is located in the southwest portion of the City along Maple Creek. Kiwanis Park can be accessed from the east or the west side. A nature trail through the park connects it with Veteran's Park to the north. Amenities include swings, a slide, a jungle gym, toddler playground equipment, a baseball diamond, and a picnic shelter with 10 tables and 4 fireplaces.

Barrier Free Assessment: 2

Lion's Park

Lion's Park is a 5 acre neighborhood park located along the banks of the Black River, west of the impoundment. This park is the trailhead for Bangor to the South Haven Heritage Water Trail, a 20.9 mile paddling route on the South Branch of the Black River. This park is a very popular fishing site, especially during the salmon and steelhead runs. A walking bridge spans the river and a nature trail traverses the north bank. Amenities include 4 basketball hoops, a picnic shelter and tables, modern restrooms, a slide, and swings are all amenities found here.

Barrier Free Assessment: 3



Don Mora Ball Park

Located at the corner of Pine and Center Streets, Don Mora is a 4.5 acre open neighborhood park with bleachers, modern restrooms, 2 picnic tables and a lunch stand making it well-suited for baseball, softball, and other team sports. The area is also lighted for night activities.

Barrier Free Assessment: 2

Monroe Park

This landscaped mini-park is near the eastern edge of Bangor's city limits and welcomes westbound travelers on M-43 to the city with a lighted "Welcome to Bangor" sign. There are currently two picnic tables and a water fountain. A paved pathway would improve the accessibility rating to 3.

Barrier Free Assessment: 2

Charles Park

This mini-park is best known for its historic 1925 C&O caboose. This focal point is located at the corner of C.R. 681 and East Monroe Street (M-43). This location makes it the first park visitors will notice when coming to Bangor from I-94 via C.R. 681. The park has four picnic tables. A paved pathway would raise this accessibility rating to a 3.

Barrier Free Assessment: 2

Veteran's Memorial Park

Located on Lafler Street, Veteran's Park is a mini-park with a memorial plaque, monument, and flags commemorating veterans of several wars. There are two picnic tables and two cement benches available for use. The park is located near the highway and is not suitable for children without supervision. A paved pathway to the memorial would increase the accessibility rating to a 3, possibly 4. This scenic area is not intended to provide physical recreation other than the nature trail that connects with Kiwanis Park to the south; however the wooded ravine provides a lovely view of wildlife and the park overall is a pleasant place to rest and reflect.

Barrier Free Assessment: 2



Lincoln Street Overlook

Also known as “Mosquito Park”, this 4-acre mini-park is located on the south bank of the Black River at the corner of Black River Road and Lincoln Avenue. Amenities include 4 picnic tables and 4 fire rings, and a dump station. (This park used to offer overnight camping) A nature trail connects this park to Lion’s Park and then traverses further east along the bank of the old mill pond.

Barrier Free Assessment: 2

Northside Playground

This mini-park, located at the corner of Second Street and North Street, offers swings and a slide for children. This is also the location of a city-owned well.

Barrier Free Assessment: 2

Black River Heritage Trail

The Bangor/South Haven Heritage Water Trail is a canoe and kayak trail encompassing 20.9 miles of the South Branch of the Black River between the cities of Bangor and South Haven.

Barrier Free Assessment: 2

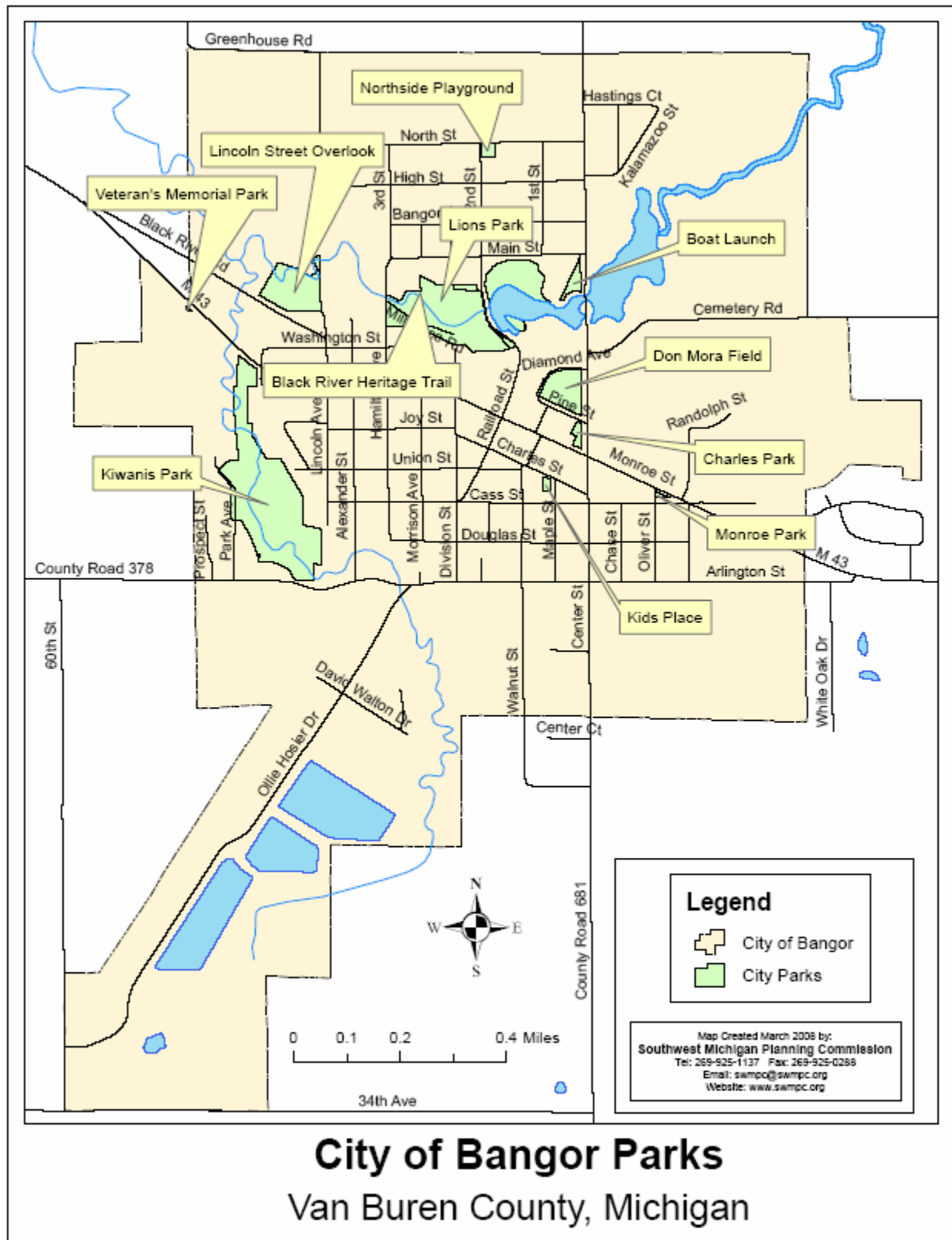
Kid’s Place

Kids’ Place is a fenced-in mini-park located at the corner of Charles Street and Maple Street. This park has modern playground equipment with some handicap-accessible structures. The only seating available to encourage adult supervision is a wood picnic table. Lack of parking adjacent to the park could lead to dangerous situations. The wood chip base is an unstable surface to walk on. The park is fenced with one entrance/exit – not gated.

Barrier Free Assessment: 3



Map of City Park Locations



Open Space and Greenways

A green infrastructure plan provides a comprehensive method to connect open spaces, parks, waterways, neighborhoods, and business districts in ways that protect and preserve habitats and features while providing the greatest enjoyment possible for residents. Green infrastructure planning can be coordinated with other planning efforts for roads, bike trails, water, electric, telecommunication, and other essential community support systems. Integrated planning and design can connect the City and surrounding areas in an effective, economic, and sustainable network.

There are several undeveloped and natural areas of varying sizes throughout the City. These areas can provide natural habitats for wildlife and provide enjoyable scenic views for humans. Some of these areas are owned by the City, the school district, or private residents. In addition to the parks, and other developed recreational venues, these open spaces provide valuable links to the green infrastructure. It is possible, and desirable, to develop policies that will protect and preserve these green spaces. By considering methods of incorporating green infrastructure throughout the community, the City is also adding to the attractive natural landscape features recognized as an important element of tourism.

Cultural/Historic Buildings and Property

The following buildings and properties are possible cultural and/or historic sites to be considered as recreational resources.¹³

- | | |
|---------------------------------------|--|
| ▪ Ed Cable House Museum | ▪ Ely's Hardware Building |
| ▪ Bangor Train Depot/Railroad/Station | ▪ West Michigan Savings Bank |
| ▪ Bangor Elevator | ▪ Bangor Library and Police Station |
| ▪ Bangor Dam and Mill Pond | ▪ Michigan Summer Blueberries |
| ▪ Old Mill Foundation? | ▪ Freestone Pickle Company |
| ▪ Harvey Block/Great Lakes Café | ▪ First Congregational Church and Church of Christ |
| ▪ Sherrod Store/Bangor Antique Mall | ▪ Historic and Centennial Homes |

School-Owned Facilities

The Bangor schools provide approximately thirty acres of recreational space and facilities. School facilities include an athletic complex at the junior and senior high school consisting of softball diamonds, one large baseball diamond, several large playing fields, several tennis courts, a football stadium, and a rubberized track. South Walnut Elementary School's facilities

¹³ From the Walking Tour Booklet, 2005

include play equipment and a large playing field, while Bangor Primary School consists of various pieces of play equipment. All of these facilities are open to the public for community recreation when not in use by the schools. Additionally, a Wellness Center now functions in the Bangor Public Schools with memberships available to both residents and nonresidents. Bangor Community Education classes are offered frequently. Many types of sporting events are offered, as well as classes in various arts, crafts, computer programs, and methods of personal enrichment.

Private Properties/Facilities

A senior center in town includes a recreation room and kitchenette. This area serves as the local Senior Citizens Center and provides activities all year long. Additionally, Bangor Okinawan Karate offers Bangor residents the chance to learn martial arts. A new addition to Bangor is Alley Kats Dance Studio.

Regional Opportunities

City of South Haven - The City of South Haven is approximately 10 miles to the west of Bangor. The City possesses 3,600 lineal feet of public shoreline and 20 acres of beach on Lake Michigan as well as a four-acre park with a boat launch and public access to Lake Michigan. With more than 60 docks, 2 piers, play equipment, volleyball, and fishing access, South Haven is a destination for many people living in southwest Michigan as well as tourists.

City of St. Joseph – The City of St. Joseph is also on the coast of Lake Michigan. Tiscornia Park, Silver Beach, and Lion’s Beach are popular beaches for swimmers, joggers, sunbathers, and boaters. Numerous festivals are held here including the Venetian and Blossomtime Festivals.

Kal-Haven Trail - The Kal-Haven trail links Kalamazoo and South Haven. This state park was built along an old railroad grade that runs just north of Bangor. The trail is utilized year round by bikers, hikers, snowmobilers, and cross country skiers.

Van Buren State Park - Van Buren State Park on Lake Michigan is just south of the beaches in South Haven. With more than 325 acres and 220 modern campsites, this is a popular camping location.

Status Report of Previous DNR Grant-Assisted Projects

Project Title:	Bangor Park
Project Year:	1986
Project Description:	Acquisition of 44 acres
Status	Closed

Project Title:	Mill Pond Park
Project Year:	1987
Project Description:	Nature trail (including steps, ramps, and signs; relocation of overhead wires in Lincoln Park; 3 parking lots and driveways; boat ramp; guard posts; fountain; and landscaping
Status	Closed

Project Title:	Black River Heritage Trail and Boardwalk Project
Project Year:	2004
Project Description:	Boardwalk with overlooks and bridge; gravel trail; native plantings; kiosk/signs/markers; skate park; upgrade of existing bathrooms and other site amenities.
Status	Pending

DESCRIPTION OF PLANNING PROCESS

Purpose of the Plan

The presence of parks, open spaces, greenways, recreational programs and cultural events has a strong positive impact on a community's vitality and quality of life. In addition to providing opportunities that can educate, improve health (both mental and physical), and increase social connections, there are a number of economic and environmental benefits as well. Maximizing these benefits is the primary purpose for developing a plan. This recreation plan will serve as a guide for local decision-making, outline projects with specific action steps and outcomes, and establish eligibility for funding opportunities offered through the Michigan Department of Natural Resources.

The Southwest Michigan Planning Commission (SWMPC), the regional planning agency serving Berrien, Cass, and Van Buren counties, was contracted to work with the City through the planning process. Reflecting the City's commitment to responsive and interactive government, a systems approach to planning was used. Interaction with the public was sought through 1) a public visioning session, 2) a citizen survey distributed to every resident, 3) a youth-focused survey distributed to high school students, 4) regular meetings with a community steering committee, and 5) a public review and comment period was held culminating with a public hearing. Long-term, overarching goals were established with an accompanying Action Plan detailing the steps necessary to bring the plan's projects to completion. Throughout every phase of the planning process, Bangor residents, business leaders, and municipal representatives have provided input and pledged continued support of the parks and recreation goals and action plan. This five-year plan truly reflects the desires of the community.

Calendar of Meetings and Input Opportunities

October 18, 2007

Steering Committee Meeting #1
City of Bangor Train Depot

November, 2007

Survey distributed to every resident

November 28, 2007

Public Visioning Session
Bangor High School Cafeteria

December, 2007

Survey distributed to High School

December 13, 2007

Steering Committee Meeting #2
City of Bangor Train Depot

January 17, 2008

Steering Committee Meeting #3
City of Bangor Train Depot

February 7, 2008

Steering Committee Meeting#4
City of Bangor Train Depot

February 11 – March 16, 2008

Public Review and Comment Period

March 17, 2008

Public Hearing
Adoption by City Commission

Public Input and Participation

Public Visioning Session Agenda – November 28, 2007

City of Bangor
Public Visioning Session
November 28, 2007 ~ 7:00 p.m.
Bangor High School Cafeteria

Welcome and Introductions	Shelley Klug
Quiz and Survey	Participants
Reasons for Visioning and Recreation Forecasts	Suzann Flowers
Progress Report	Michael Selden, City Manager
Participation Exercise	Led by Suzann Flowers and Shelley Klug
Quiz Answers and Prize Giveaways	Shelley Klug

Visioning Session Results

What I Like About the Parks in Bangor

River enhancement along trail	10
Paved trails	4
Facilities are well-maintained	4
Black River Heritage Trail	4
Sledding at Kiwanis	4
Depot Renovation	3
Concession stand at Don Mora	2
Access to trails	1
Lion's Park is for kids	1
Non-paved trails	
Lunch/picnics at Monroe	

What I Don't Like About the Parks in Bangor

Not enough benches	10
Lion's does not have good equipment for children	9
Not enough bathrooms	8
Dirt road at Lion's	6
The horseflies at Kiwanis	3

What I Want for Bangor

Music/movies in the park	8
Canoe Livery	6
Overnight camping	5
Circuit training/Exercise Stations	4
Paved Bike Trails	3
Lion's Park to be more family oriented	2
Frisbee golf in Kiwanis	2
Horseshoes	2
Better surfaced road at Lion's Park	2
Use kiosks to advertise parks	2
Lodging/amenities signs	1
Groups to sell concessions (i.e. fundraisers)	1
Softball diamonds	
Picnic area signs at Monroe Park	
Bleachers at Don Mora	
Garbage receptacle at Mill Pond	
Bleachers at the skate park	
Year round pool	
Upgrades to Kiwanis Park	

CITY OF BANGOR
Parks and Recreation Survey Summary
 Conducted November 2007
Summary of Results Presented January 2008

Thank you for taking the time to complete this short survey. Your answers will help develop the future of the parks and recreation in the City of Bangor. *All of the questions apply to the person filling out the survey only.*

Question 1. Where is your primary residence?								
	City of Bangor	Bangor Township	Arlington Township	Columbia Township	Geneva Township	No Response	Other	Total
Community	20	1	3	1	0	2	0	27
High School	21	25	6	17	9	7	7	92
Total	41	26	9	18	9	9	7	119

Question 2. How often do you use the following parks and recreational facilities?
Please indicate your primary activity at these locations.

Public Parks within the City - Check 1 box per location.

	Never		1-5 times per year		6-12 times per year		More than 12 times per year	
	Com-munity	High School	Com-munity	High School	Com-munity	High School	Com-munity	High School
Kiwanis Park	12	51	5	29	2	6	1	6
Don Mora Ball Park	14	71	10	13	0	3	1	1
Lion's Park	8	47	5	24	1	6	2	14
Monroe Park	14	78	0	7	0	2	1	1
Charles Park	14	80	1	6	0	2	1	0
Northside Playground	14	81	3	3	0	3	0	0
Lincoln Street Overlook	12	81	2	2	0	3	0	1
Veteran's Park	14	84	3	2	0	2	0	0
Kids' Place	8	79	7	7	2	4	3	1
Black River Heritage Trail	10	70	5	12	1	4	2	3

School Property – (Students, please indicate only time spent *AFTER* school – do not include time during school hours.) Check 1 box per location.

	Never		1-5 times per year		6-12 times per year		More than 12 times per year	
	Com-munity	High School	Com-munity	High School	Com-munity	High School	Com-munity	High School
South Walnut Elementary	5	62	3	10	1	6	3	9
Bangor Primary School	6	59	3	11	0	5	3	9
Bangor Middle School	6	53	2	14	1	5	3	10
Bangor High School	4	21	5	11	2	14	4	42

Question 3. Other than the places listed in Question 2, where do you go (in southwest Michigan) for recreation or leisure activities? Why? (Please list your top 3)

Activity	Community		Activity	High School
1. Outdoor Venues	27		1. Outdoor Venues	57
2. South Haven	11		2. South Haven	50
3. Beach	11		3. Beach	26
4. Plays/Theater/Concerts	5		4. Kalamazoo	18
5. Kalamazoo	4		5. Mall	15
6. St. Joseph	3		6. Movies	14
			7. Bowling	5

Question 4. Which of the following are your favorite activities? *Please select only 6 activities.*

Activity	Community	Activity	High School
1. Relaxing	15	1. Swimming	53
2. Walking/Jogging	13	2. Relaxing	46
3. Fishing	11	3. Walking/Jogging	37
4. Picnicking	11	4. Camping	31
5. Swimming	10	5. Fishing	28
6. Nature Watching	10	6. Snowmobiling	28
7. Bike Riding	8	7. Bike Riding	22
8. Camping	8	8. Canoeing/Kayaking	17
9. Dog Walking	6	9. Skateboarding/Rollerblading	17
10. Hiking	4	10. Horseback Riding	14
11. Canoeing/Kayaking	4	11. Boating	13
12. Boating	3	12. Dog Walking	11
13. Horseback Riding	2	13. Picnicking	8
14. Snowmobiling	2	14. Hiking	7
15. Skateboarding/Rollerblading	2	15. Nature Watching	7
16. Cross-Country Skiing	1	16. Frisbee Golf	5
17. Frisbee Golf	0	17. Cross-Country Skiing	3
18. Other	0	18. Other	0
19. No Response	0	19. No Response	6

In response to “Other” the following were mentioned: basketball (10), places to play computer games in public (4), snowboarding (4), hunting (4), sledding (2), hockey (2), football (2), beach (2), sports (2), ice skating (2), volleyball (2), shopping, clubbing, driving lawn tractor, hanging out with friends, paintball, music concerts, playing cards, baseball, driving, soccer, reading on benches, skating, and playing at home.

Question 5. Which of the following amenities/activities are important to you?

Please select only 6.

Amenity/Activity	Community		Amenity/Activity	High School
1. Restrooms	16		1. Organized Sports	40
2. Picnic Areas	13		2. Concerts	36
3. Natural Resource Preservation	12		3. Restrooms	36
4. Family Activities	12		4. Festivals	34
5. Concerts	8		5. Drinking fountains	31
6. Cultural/Heritage	7		6. Family Activities	19
7. Playground equipment	7		7. Open Space	18
8. Drinking fountains	6		8. Arts & Crafts	17
9. Organized Youth Activities	5		9. Paved hiking/biking trails	15
10. Nature Center	5		10. Natural Resource Preservation	15
11. Paved hiking/biking trails	4		11. Playground equipment	15
12. Arts & Crafts	4		12. Outdoor Education	14
13. Open Space	4		13. Picnic Areas	13
14. Outdoor Education	3		14. Barrier free facilities	10
15. Organized Sports	3		15. Organized Youth Activities	10
16. Dog Park	3		16. Nature Center	10
17. Barrier free facilities	2		17. Pre-school age programs	9
18. Pre-school age programs	2		18. Dog Park	9
19. Advanced Bike Trails	2		19. Cultural/Heritage	8
20. Interpretive Programs	1		20. Horseback riding trails	8
21. Festivals	1		21. Advanced Bike Trails	6
22. Horseback riding trails	1		22. Interpretive Programs	3
23. Other	0		23. Other	0
24. No Response	0		24. No Response	10

In response to “Other” the following were mentioned: Benches in sun and shade (3), camping/canoe livery, a place to drive fast, basketball courts, Paw Paw River Watershed Projects, exercise, place to meet to play video games, stair sets, street ball, Taco Bell, quad riding.

Question 6. Please indicate your age group.			Question 7. Please indicate your gender.		
	Community	High School		Community	High School
<19 years	1	92	Male	11	44
20-40 years	3		Female	9	37
41-60 years	13		No Response	7	11
>61 years	10				
No Response	0	0			

Question 8. What specific park or recreation project would you like the City of Bangor to complete in the next 5 years?

Question 9. Please share any additional suggestions or comments regarding parks and recreation in the City of Bangor.

****Answers to Survey Questions 8 and 9 Combined Below****

Specific Park Suggestions

Charles Park - replace tables

Kid's Place – need more playground equipment & bathrooms, put tables in the shade

Kiwanis, improve maintenance of parks and playground equipment

Lion's Park lights at night, open restrooms, water fountains (3)

General Suggestions/Comments

Amenities - Form City Parks and Recreation Department, volunteer Friends of the Parks group, Continue to upgrade/renovate parks (2), add BBQ pits, Lights for Parks (Night use), Add stuff to parks (3), Add family activities (2), Add trees downtown, better policing so kids can enjoy parks (2), Not all facilities need to be barrier-free, summer non-competitive activities, Finish the elevator (Mill), Enclosed park/restaurant

Advertise - Make Bangor a destination, advertise Black River Canoe/Kayak trail

Basketball courts at Lions or Kiwanis, away from skaters (9)

Bathrooms –Open more, improve, more maintenance (6)

Campground, camping areas (3)

Compliments - Parks are awesome, Parks are starting to look better, Parks are very nice (2), Mural is good addition,

Cultural Events (2), Concerts (3), Arts and Crafts shows, festivals

Ice Rink for Hockey Team (7)

Maintenance -Increase maintenance, replace wood chips, spray for bees, keep garbage cans empty, clean Park Street, brush is overgrown, Mow weeds, clean river, keep park neat (5)

Nature Trails, walking, exercise, marked walking tour, Dry paved walk areas, extend river walk, Trail connecting Breedsville/Bangor, Connect trails to outlying trails for bikers and snowmobiles (10)

Playgrounds – as community project (2)

Public Pool (5)

Skate park (is nice, enlarge, finish), Skating area in park (6), Roller skating rink for teens, Snowboard park, ski resort

Sporting Fields - Soccer field (2), Football field, softball diamonds, indoor sports complex, BMX Park, Lawn tractor racing track, Open field with jumps and tracks for quadding (4-wheeling),

Sports Center (2), bowling alley

Video games - tournament venue (2)

Youth-Focused - YMCA, Boys/Girls Club, Rec Center (2), Teen activities/ Teen club(4), Supervised activities, dance (2), music, theater, cool place to hang out, safe place to hang out in town, Amusement Park (3), Arcade (4), Movie theater/fast food (5)

GOALS AND PROJECT DESCRIPTIONS

Goals

The following goals were developed with thoughtful consideration of public opinion as expressed in the visioning session, surveys, and steering committee meetings. These goals were then used to guide the process of measuring and evaluating projects for inclusion in this plan and to provide structure for decision-making in the future.

- Goal #1** **Establish consistent park organization through the creation of a Parks Advisory Board**
- Goal #2** **Seek comprehensive recreation planning that includes parks, open space, greenways, and cultural and artistic components.**
- Goal #3** **Develop and support policies that will preserve and protect valuable water and land resources, and properties with historic and/or cultural value.**
- Goal #4** **Respond to community characteristics by seeking to provide recreational opportunities for all with consideration of age and abilities.**
- Goal #5** **Enhance partnerships with surrounding units of government for the purpose of collaborative planning.**
- Goal #6** **Seek and establish connections between existing and future trails and pathways including greenways and waterways.**

Objectives and Project Descriptions

The following narrative provides insight to the thoughts and rationale of the steering committee as they worked to create objectives and select projects that are necessary, desirable, and viable. (The Action Plan with priority levels, time frames, and estimated costs follows this *Project Description* section.)

Park Organization

Develop a Recreation Advisory Board: Coordination and communication with City government, surrounding townships' officials, the school district, and citizens of the Bangor area is fundamental to the success of this parks and recreation plan. The creation of a Recreation Advisory Board will facilitate coordination and communication by introducing a formal structure that will more efficiently manage recreation opportunities and duties. The Advisory Board will not have power to take action; however, it will make formal recommendations to the City Council and Downtown Development Authority. The Recreation Advisory Board will also act as a liaison between the community and the schools to coordinate

recreational events and facilities - it is recommended that at least one seat on this board be reserved for a member of the school community. (See Goal #1)

Some of the projects and objectives the Advisory Board could oversee and accomplish include:

- **Developing a community calendar** – *it has been considered difficult for residents to be informed about all of the events occurring in and around Bangor. A reliable, accessible, and up-to-date calendar would contribute to the attendance and support of community events.*
- **Conduct feasibility study to determine site for ice rink** – *some of the possible sites for a seasonal ice rink include Don Mora Field, Kiwanis Park, or Lion's Park.*
- **Develop signage plan (including site identification and wayfinding signs)** – *there are currently very few signs indicating the names and/or locations of parks in Bangor. Proper signage not only indicates locations of parks within a community, it also exhibits a community's sense of pride in its open space. Compared with the relatively low cost of creating and installing signs, the rate of return is high. In an effort to make Bangor a "drive to" rather than a "drive through" community, and to encourage the citizens of Bangor to enjoy their community, the installation of well-designed signs will be a significant benefit for Bangor.*
- **Assist with the establishment of a "Friends of the Park" volunteer group** – *there are a number of tasks necessary to maintain a high quality recreational area. It is beyond the City's ability to tend to every detail other than routine park maintenance. A "Friends" group could raise funds, care for plantings, sponsor clean-up days, and lend support in many other ways to the Park Advisory Board.*
- **Assist with the establishment of stable and secure funding sources** – *realistic expectations of improvements or additional park amenities depend on reliable funding sources. Many grants require matching funds of some percentage, some projects may not qualify for grants, and some may exceed grant limitations. In any case, projects need not be abandoned if adequate funding sources are established and nurtured.*
- **Guide development and plans to ensure projects are aligned with goals to protect/preserve/enhance natural and historic resources** – *as new ideas or projects develop, it is important to have a framework or criteria established to guide decision-making. This five-year plan has established overarching goals to be used as a reference to determine the viability and fit of current and future projects. The Recreation Advisory Board would review and make recommendations based on these criteria.*

General Park and Recreation Projects

- ***Acquire property at the corner of M-43 and Maple Creek (west side of the City)*** – the acquisition of this property would benefit the park system because it provides a link between parks and creates an uninterrupted greenway. (See Goal #2)
- ***Acquire property known as “Krystal Palace”*** – the acquisition of this property would provide additional access to the Lincoln Street Overlook and to potential camping sites. (See Goal #2)
- ***Develop non-motorized trail*** along C.R. 681 (or other trail system) to connect City of Bangor trails with the Kal-Haven Trail to the north. (See Goal #6)

Park Projects

Kiwanis Park Improvements – this park has the potential to be developed into a hub for winter activities. The addition of restrooms and benches (possibly covered) would enhance the existing sledding hill and stairs. Installing a webcam to monitor and advertise snow and ice (especially if this site is chosen for an ice rink) conditions would be a fun and inexpensive way to create interest in outdoor activities for residents and visitors. A maintained walking trail connecting Kiwanis with Veteran’s Park could be an all-season amenity increasing usage of both parks (and provide access over to Lincoln Street Overlook). A paved pathway to the picnic pavilion and eventually to the new restrooms would enhance the barrier-free access of this park.

Don Mora Ball Park Improvements – the existing conditions of this park are amenable to being used as a concert venue. Upgrades and additional bleachers would help facilitate larger crowds. This park also has possibilities as an ice-rink.

Lion’s Park Improvements – this popular park has an existing bathroom that will be retro-fitted to meet barrier-free compliance standards which includes the installation of a paved walkway to a paved parking space. Because there are basketball courts (updates needed), the Skatepark and other playground equipment nearby, water fountains would be an appreciated amenity. Installing BBQ grills would also increase the enjoyment of park users. The current access road gets dusty and is difficult to navigate. Options are being explored to improve the surface of this road without compromising the nearby river with excessive runoff.

Bangor Skatepark Improvements – located in Lion’s Park, this relatively new venue is used frequently and as stated in the survey, users would appreciate water fountains and restrooms nearby.

Monroe Park Improvements – although small, this park is a popular picnic location that will be improved with the addition of BBQ grills, another picnic table, and a working water fountain. Because of its location on a major access road to the City, this site could also be considered for a kiosk or display board to put a community calendar or announcements.

Charles Park Improvements – this small park is located near the intersection of two major access roads into the City – a possible desirable place for a kiosk or display board to put a community calendar or announcements. This park would be safer if there was additional space allocated to allow for off-road parking. Removing the plywood and completing restoration work would add beauty and historic authenticity to the 1925 C & O Caboose.

Northside Playground Improvements – the existing playground equipment is adequate to meet the needs of this park.

Lincoln Street Overlook (aka Mosquito Park) Improvements – additional trails connecting this park with Veteran's Park and Kiwanis Park make it an ideal location to install exercise stations along the trail and Disc Golf stations throughout the park. This park has been used for camping in the past and a great deal of interest is being expressed to make camping sites available again.

Veteran's Park Improvements – maintaining the trail that currently connects Veteran's Park with Kiwanis, and adding trails to connect with Lincoln Street Overlook would enhance the recognition of this memorial park. The parking area will benefit from upgrades to paint and possibly providing barrier-free access to the flag and monument area.

Kids Place Park Improvements – while still being relatively new, this park does not need major repair but will be improved with the addition of a water fountain and covered benches. Other projects under consideration that would enhance the park include installing plantings along the chain link fence and defining the parking area with signs.

Black River Heritage Trail – one of the most interesting attractions in Bangor, with a great deal of tourism potential, this area will benefit from completing the signage project with a kiosk providing maps of the trail showing put-in points. To facilitate further use of the river trail, a canoe/kayak livery with launch is very desirable. The walking path along the river would be enhanced by connecting under the railroad crossing bridge.

Historic/Cultural Sites

Ed Cable House - Ed Cable was the first successful African-American businessman in Bangor. Mr. Cable came to this community in the early 1870s. He was highly respected and served the community as a barber for almost 60 years. The Cable House is still located on Cass Street and efforts are underway to preserve and protect this interesting piece of Bangor history.

Map of Proposed Projects



City of Bangor Proposed Recreation Projects Van Buren County, Michigan

ACTION PLAN

The following is the five-year Action Plan (capital improvement plan) for the community parks, recreation, open spaces, greenways, and historic/cultural sites in the City of Bangor. This Action Plan focuses primarily on projects that will maintain or improve the usability of existing parks in the system and establish a framework for sustainability and further development in the future. It is the intention of the City Council to seek funding opportunities from State and federal sources whenever possible to maximize private and local government funds.

Time Frame: Year 1=2008-2009 Year 2=2009-2010 Year 3=2010-2011 Year 4=2011-2012 Year 5=2012-2013

Estimated Cost: *Costs are general estimates taken from previous plans*

Priority Level: 1 = Highest Priority 2 = Mid-Priority 3 = Least Priority

Park Organization and General Park Projects

Project Description	Time Frame	Estimated Cost	Priority Level
Establish a Recreation Advisory Board	Year 1	-0-	1
▪ Develop Community Calendar	Year 1	-0-	1
▪ Conduct feasibility study to determine site for ice rink*	Years 1-2	-0-	2
▪ Develop Signage Plan	Year 1	-0-	1
▪ Recruit "Friends of the Park" volunteer group	Years 1-2	-0-	2
▪ Establish stable and secure funding sources	Years 1-5+	-0-	1
▪ Develop Concert Series	Year 1	-0-	1
Acquire property at the corner of M-43 and Maple Creek (west side of City)	Year 1	\$49,000	1
Acquire property known as "Krystal Palace"	Years 1-2	\$39,999	2

*Possible sites include Don Mora, Kiwanis, or Lion's

Name of Park: *Kiwanis Park*

Project Description	Time Frame	Estimated Cost	Priority Level
Add restrooms (ADA)	Year 2	\$15,000-\$20,000	2
Develop winter activities	Years 1-5+	-0-	2
Add benches (covered)	Years 2-3	\$1500	2
Install webcam to monitor and advertise snow and ice conditions	Year 2	\$500	2
Develop/maintain walking trail to Veteran's Park	Years 1-5+	\$500 per year	2
Develop plans to improve west side entrance	Year 2	-0-	2
Accessible walkway (paved) to pavilion	Year 3	\$5,000	2



Kiwanis Park

Name of Park: *Don Mora Field*

Project Description	Time Frame	Estimated Cost	Priority Level
Upgrade and add bleachers	Years 2-3	\$5,000-\$10,000	1
Develop as concert venue (Stage?)	Year 2	<\$5,000	1



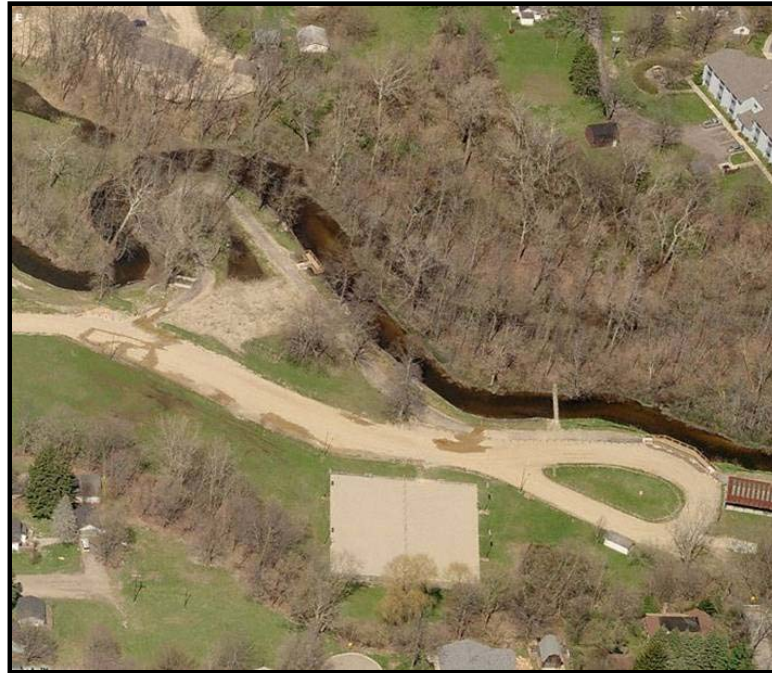
Don Mora Field

Name of Park: *Lion's Park*

Project Description	Time Frame	Estimated Cost	Priority Level
Install BBQ Grills (Already owned)	Year 1	-0-	1
Complete ADA bathroom project (paved walkway from paved parking space)	Year 1	\$5,000	1
Add water fountains near playground and basketball courts	Years 1-2	\$2,500	2
Finish basketball courts	Year 1	-0-	1
Improve access road (Explore options such as permeable pavement)	Years 3-5	N/A	3

Name of Park: *Skatepark*

Project Description	Time Frame	Estimated Cost	Priority Level
Recruit volunteers to paint jumps	Years 1-2	-0-	2



Lion's Park

Name of Park: *Monroe Park*

Project Description	Time Frame	Estimated Cost	Priority Level
Fix water fountain	Year 1	-0-	1
Add bench	Years 1-2	\$800	2
Install decorative fountain	Years 2-3	\$2,000	3



Monroe Park

Name of Park: *Charles Park*

Project Description	Time Frame	Estimated Cost	Priority Level
Study possibility of restoring the Caboose (Remove plywood)	Years 1-2	-0-	2
Consider adding parking space (2-3 spaces)	Year 1	-0-	1



Charles Park with Caboose

Name of Park: *Northside Playground*

Project Description	Time Frame	Estimated Cost	Priority Level
Continue maintenance as is – no changes	N/A	N/A	N/A



Northside Playground

Name of Park: *Lincoln Street Overlook (Mosquito Park)*

Project Description	Time Frame	Estimated Cost	Priority Level
Install Disc golf (aka Frisbee golf)	Years 3-5	\$5,000	2
Consider feasibility of adding exercise stations	Years 3-5	-0-	2
Develop camping area (or on future acquired property)	Years 3-5+	N/A	3
Connect and maintain trail to Lion's Parks	Year 2	<\$500	2
Consider purchase of Krystal Palace Property to increase size and access (See photos below)	Year 1	\$40,000 (Approximate)	2



Lincoln Street Overlook



Close-up of Krystal Palace Property

Name of Park: *Veteran's Park*

Project Description	Time Frame	Estimated Cost	Priority Level
Maintain Trail to Kiwanis	Years 1-5	<\$500	1



Veteran's Park

Name of Park: *Kids' Place*

Project Description	Time Frame	Estimated Cost	Priority Level
Add water fountain	Years 1-2	\$2,500	1
Add covered benches	Years 2-3	\$1,600	2
Define parking area with signs	Year 1	\$250	1
Install plantings along chain link fence (Volunteers)	Years 2-3	-0-	2



Kid's Place

Name of Park: *Black River Heritage Trail*

Project Description	Time Frame	Estimated Cost	Priority Level
Connect points under RR Crossing Bridge	Years 1-2	N/A	2
Provide signs and maps in Kiosk	Year 1	-0-	1
Install signs for Canoe/Kayak launch	Years 1-2	-0-	1



View of Railroad Crossing – Proposed Trail Connection Point

Historic/Cultural Sites

Project Description	Time Frame	Estimated Cost	Priority Level
Develop plan to preserve and promote use of the Cable House	Years 1-2	-0-	1

APPENDIX

Public Notices – Visioning Session

The Public Visioning Session was very well advertised in a variety of media as demonstrated by Exhibits 1-4 following.

Exhibit 1: E-Newsletter sent by the City Manager to over 200 recipients.

From: City of Bangor-Michael Selden [bangormi@btc-bci.com]
Sent: Monday, November 26, 2007 1:49 PM
To: Undisclosed-Recipient;
Subject: E-News Reminder

I hope everybody had a very Happy and Safe Thanksgiving Weekend!!

I would just like to remind everybody of our upcoming visioning session for our Parks and Recreation Plan. This visioning session is open to anyone and everyone who may have an interest in the City of Bangor Parks and Recreation. This visioning session is Wednesday night, November 28 at the Bangor High School Cafeteria from 7:00pm to 9:00pm.

I look forward to seeing everyone there,

Michael Selden, Manager, City of Bangor
Phone: 269.427.5831 // Fax: 269.427.7919
Settled 1835, organized as a Township, 10-9-1853
Organized as a Village 3-21-1877
Organized as a City 2-5-1968

Exhibit 2: The Sunday edition of the South Haven Tribune on November 11, 2007.

2B — SUNDAY, Nov. 11, 2007

By KIM INGALLS
Tribune staff writer

BANGOR — The recent controversy over the city cutting down trees in the downtown area continued Monday night

during the Bangor City Council meeting as council members and the audience had their say on the issue.

The removal of the trees several weeks ago generated a lot of comments, both positive and negative, and resulted in the council looking at how the matter could have been handled better.

Some of the suggestions included publishing agendas on the city's Web site so that the public will know what issues will be under discussion at upcoming meetings. Other suggestions included seeking public comment in the form of

City wants input on the future

Bangor area residents are invited to participate in an interactive public visioning session to share ideas about the City's Parks and Recreation Plan.

This is an opportunity for residents to utilize a variety of methods designed to inspire creative discussions and ideas for the development of parks, recreation, and open spaces in the City of Bangor. There will be discussion groups, a short survey, and other opportunities to work coopera-

tively and create a vision and plan for recreation in Bangor.

The public visioning session will be held Nov. 28, 2007 at 7 p.m. in the Bangor High School Cafeteria located at 801 W. Arlington St., in Bangor. If you are unable to attend, you are encouraged to fill out the printable survey available on the following websites: Southwest Michigan Planning Commission (www.swmpc.org) or the City of Bangor (<http://ci.bangor.mi.us/>).

South Haven Tribune, South Haven, Michigan



Photo by Kristin Hay

Cox and A. J. Distefano opened Maria's at Oct. 27.

Restaurant spices up

that communication was a problem. I also think the

and falling.

The trees were planted

Exhibit 3: The Reminder Shopping Guide is a weekly paper distributed to every mailbox in the City of Bangor. This announcement is dated November 26, 2007.

PAGE 01/01

Page 12

REMINDER SHOPPING GUIDE (reminder@lodisnet.com)... MONDAY, NOVEMBER 26, 2007

COMMUNITY BULLETINS

Call, Mail, E-Mail, or fax your Not For Profit announcements two weeks in advance of publication.
The Reminder reserves the right to edit and/or refuse any copy not appropriate for publication.

P.O Box 218, Bangor, MI 49013 • E-Mail: reminder@lodisnet.com
Fax: (269) 427-5286 • Phone (269) 427-7474

REMINDER

2694275286

01/09/2008 13:07

BANGOR RECREATION SURVEY & VISIONING SESSION

Bangor area residents are invited to complete a short survey and participate in an interesting and interactive public visioning session to share ideas for the City's Parks and Recreation Plan. The survey and the visioning session are two great opportunities for residents of the City of Bangor, Bangor Township, Arlington Township, Geneva Township, and Columbia Township to work cooperatively creating a vision and five-year plan for recreation in Bangor.

The public visioning session will be held November 28, 2007 at 7:00 p.m. in the Bangor High School Cafeteria located at 801 W. Arlington Street in Bangor. If you are unable to attend, you are encouraged to fill out the printable survey available on the following websites: Southwest Michigan Planning Commission (www.swmpc.org) and the City of Bangor (<http://ci.bangor.mi.us/>). Please return the completed survey to City Hall at 257 West Monroe Street in Bangor.

MAKE YOUR RESERVATIONS NOW FOR THE COMMUNITY HOSPITAL FOUNDATION "DECK THE HALLS" GALA AND SILENT AUCTION

Start the holiday season with a great party and give back to your community at the same time! The Gala will be held at the Point O Woods Country Club on

Help Us Help Them!



This is LadyBug! She is adorable Shnauzer mix. She has wiry hair, and is black with a cream colored face and paws. She is approx. 6 months old. LadyBug is a very sweet girl and loves to be on your lap. She is looking for a loving family!

Al-Van Humane Society
637-5062

HABITAT FOR HUMANITY SEEKING APPLICANTS

Harbor Habitat for Humanity is currently seeking applicants and looking for families for the 2008-2009 Build Seasons. Interested families must attend an Orientation Session in order to obtain an application. Habitat is seeking Partner Families who currently live in sub-standard housing conditions, fall within the pre-

Exhibit 4: The Herald-Palladium November 26, 2007

<http://www.heraldpalladium.com>

IN BRIEF

Public can comment on rec plan Wed.

BANGOR — The city of Bangor is inviting residents of Bangor , Bangor Township, Arlington Township, Geneva Township and Columbia Township to comment on the five-year recreation plan. A public “visioning” session will be held at 7 p.m. Wednesday in the Bangor High School cafeteria. Anyone unable to attend is encouraged to fill out the printable survey available at Web sites of the Southwest Michigan Planning Commission (www.swmpc.org) and the city of Bangor (<http://ci.bangor.mis.us/>). People are asked to return the completed survey to City Hall in Bangor , 257 W. Monroe St. Bangor

Powered by TECNAVIA

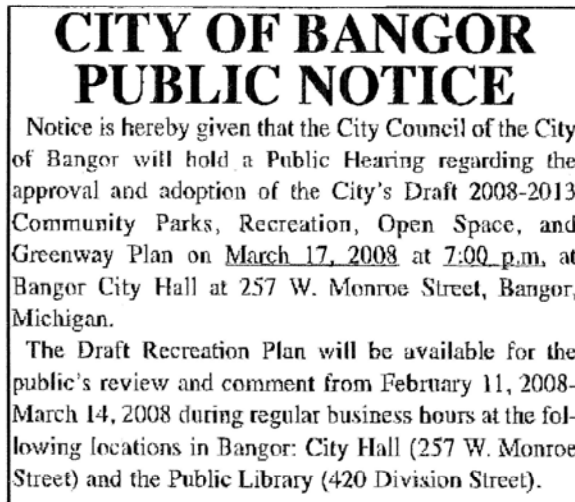
Copyright (c)2007 The Herald-Palladium 11/26/2007

Notice of Comment Period and Public Hearing – The Reminder

Notices for the Review and Comment Period included the announcement below which was published February 11, 2008 in The Reminder, a weekly paper in the City of Bangor.

FEB 11 2008

2/11/8
(R)



2 x 3

Text of Notice repeated below:

City of Bangor Public Notice

Notice is hereby given that the City Council of the City of Bangor will hold a Public Hearing regarding the approval and adoption of the City's Draft 2008-2013 Community Parks, Recreation, Open Space, and Greenway Plan on March 27, 2008 at 7:00 p.m. at Bangor City Hall at 257 W. Monroe Street, Bangor, Michigan

The Draft Recreation Plan will be available for the public's review and comment from February 11, 2008-March 14, 2008 during regular business hours at the following locations in Bangor: City Hall (257 W. Monroe Street) and the Public Library (420 Division Street).

The plan was also available on the City of Bangor's website (<http://ci.bangor.mi.us/>) and the Southwest Michigan Planning Commission's website – (http://www.swmpc.org/recplanning_2.asp).

Information was available on the Southwest Michigan Planning Commission Website



The screenshot shows the Southwest Michigan Planning Commission (SWMPC) website. At the top is a banner image of sailboats on a lake. Below the banner is a navigation menu with four links: [About Us](#), [Regional Information](#), [What We Do](#), and [Resources & Planning Tools](#). On the left is a sidebar with a circular logo for SWMPC. Below the logo is a box titled "IS YOUR COMMUNITY PROTECTED? ARE YOU?" with the heading "28 WAYS TO STAY OUT OF COURT!". This box includes an image of a gavel and details for a Thursday, February 28, 2008, workshop from 9:00-11:00 a.m. at Lake Charter Township Hall and an alternative location at the Cass District Library from 4:00-6:00 p.m. The Michigan State University Extension logo is at the bottom of this box. Below the box is a link for "Planning & Zoning Workshop". Further down the sidebar is a "Community Planning" section with a list of links: [Community Services](#), [10-Year Plans to End Homelessness](#), [Community Profiles](#), [Master Planning](#), [Recreation Planning](#), [Environmental Planning](#), [Transportation Planning](#), [Other Studies and Planning Projects](#). The main content area on the right has a breadcrumb trail: [What We Do Home](#) > [Community Planning](#) > [Recreation Planning](#) > [Van Buren County](#). Below this is the heading "Van Buren County Recreation Plans" with a home icon. The section "The Hartford Community" describes a five-year recreation plan created in 2006. A link for "The Hartford Community Park, Recreation, Open Space and Greenway Plan" is provided. The "The City of Bangor" section describes an update to the 2002-2007 plan, mentioning a visioning session on November 28, 2007, and a link to a "Bangor Recreation Survey". A paragraph states that the draft plan is available for public review through March 17, 2008, at City Hall, the City Library, and via a link. The link is "City of Bangor DRAFT Community Parks, Recreation, Open Space, and Greenway Plan". The page concludes with "This page last updated on 2/27/2008."

IS YOUR COMMUNITY PROTECTED? ARE YOU?

28 WAYS TO STAY OUT OF COURT!



THURSDAY
February 28, 2008
9:00—11:00 a.m.
Lake Charter Township Hall
3220 Shoreline Road, Brighton
OR
4:00—6:00 p.m.
Cass District Library
319 M-62 North, Cassopolis

MICHIGAN STATE UNIVERSITY EXTENSION

[Planning & Zoning Workshop](#)

Community Planning

- [Community Services](#)
- [10-Year Plans to End Homelessness](#)
- [Community Profiles](#)
- [Master Planning](#)
- [Recreation Planning](#)
- [Environmental Planning](#)
- [Transportation Planning](#)
- [Other Studies and Planning Projects](#)

[What We Do Home](#) > [Community Planning](#) > [Recreation Planning](#) > [Van Buren County](#)

Van Buren County Recreation Plans

The Hartford Community

In 2006, the City of Hartford and Hartford Township collaborated to create a Five-Year Community Recreation Plan that would benefit all residents of both communities.

[The Hartford Community Park, Recreation, Open Space and Greenway Plan](#)

The City of Bangor

The City of Bangor is in the process of updating its 2002-2007 Parks, Recreation, Open Space, and Greenway Plan. A public visioning session was held November 28, 2007 at 7:00 p.m. in the High School Cafeteria. One of the activities gave participants an opportunity to complete a Parks Survey (link below).

[Bangor Recreation Survey](#)

The DRAFT Community Parks, Recreation, Open Space, and Greenway Plan is currently available (through March 17, 2008) for public review and comment at City Hall, the City Library, and through the link below.

[City of Bangor DRAFT Community Parks, Recreation, Open Space, and Greenway Plan](#)

This page last updated on 2/27/2008.

Notice of Public Hearing – South Haven Tribune

A second announcement for the Public Hearing was published March 17, 2008 in the South Haven Tribune

NOTICE OF PUBLIC HEARING
Bangor City Park and Recreation Plan

The City of Bangor will hold a public hearing on March 17, 2008 at 7:00 p.m. in the Council Chambers at City Hall. The purpose of the hearing is to report on and take comments on the Bangor City Five Year Park and Recreation Plan. An approved plan is required to obtain certain funding and grants. Persons wishing to speak or ask questions regarding the plan may attend the meeting. Written comments are also accepted. Provide written comments to City Manager Michael Selden. Written comments may be dropped off at City Hall at 257 West Monroe Street, Bangor, MI 49013 prior to the meeting. This meeting is open to the public. Records are kept at City hall and may be requested from the City Clerk, Linda Vaught most any weekdays between the hours of 8:00am and 5:00pm.

City of Bangor, 257 West Monroe Street, Bangor, MI 49013
Telephone: 269-427-5831 * Fax: 269-427-7919
Email: bangor@bte-bci.com * Web: <http://ci.bangor.mi.us>

3-16-08
South Haven Tribune

Affidavit of Publication for Public Hearing

Affidavit of Publication

State of Michigan

County of Van Buren) SS

TINA RASMUS, being duly sworn and says that she is the advertising consultant of The South Haven Tribune, a newspaper published, printed and circulated in the County of Van Buren, State of Michigan; That the affixed printed notice has been printed and published in said newspaper 1 times. Same being on the following days, to wit:

3/16/08

Signature

Tina Rasmus

Subscribed and sworn to me this

19 Day of Apr A.D. 2008

Chris Holton
NOTARY PUBLIC, Van Buren County, MI
My commission expires 3-31-2011

Bill amount _____

The South Haven Tribune
255 Center St.
South Haven, MI 49090
269-637-1104
classifieds@southhaventribune.com

NOTICE OF PUBLIC HEARING Bangor City Park and Recreation Plan

The City of Bangor will hold a public hearing on March 17, 2008 at 7:00 p.m. in the Council Chambers at City Hall. The purpose of the hearing is to report on and take comments on the Bangor City Five Year Park and Recreation Plan. An approved plan is required to obtain certain funding and grants. Persons wishing to speak or ask questions regarding the plan may attend the meeting. Written comments are also accepted. Provide written comments to City Manager Michael Selden. Written comments may be dropped off at City Hall at 257 West Monroe Street, Bangor, MI 49013 prior to the meeting. This meeting is open to the public. Records are kept at City hall and may be requested from the City Clerk, Linda Vaught most any weekdays between the hours of 8:00am and 5:00pm.

City of Bangor, 257 West Monroe Street, Bangor, MI 49013
Telephone: 269-427-5831 * Fax: 269-427-7919
Email: bangormi@bic-bci.com * Web: <http://ci.bangor.mi.us>

Chris Holton, Notary Public
State of Michigan
My Commission Expires March 31, 2011
Residing in the County of Van Buren

Minutes of Council Meeting with Public Hearing and Plan Adoption

CITY OF BANGOR

COUNCIL MEETING MINUTES

March 17, 2008

Mayor Waite called the meeting to order at 7:00 p.m.

The Pledge of Allegiance was recited by all present.

Roll Call

Present were Mayor Clifford Waite, Mayor Pro-Tem Richard Sutherby, Council Members Rosemary Insidiosos, Greg Moench, Teresa Wiles, Phil Wiles and Jennifer Carpio. Also in attendance was Michael Seiden, City Manager.

Absent: None

Motion by Council Member Carpio, supported by Council Member Insidiosos, to approve the Regular minutes from the March 3, 2008 meeting as presented.

Yes	No	Abstain	Absent
Waite	Sutherby	None	None
Insidiosos			
Moench			
T Wiles			
P Wiles			
Carpio			

Kent Ratzlaff discussed the new City Website suggestions and asked the Council to add any ideas that they may have. He also gave out a picture of what the home page may look like and requested comments and ideas for that also.

PUBLIC HEARING

The purpose of the Public Hearing is to discuss the Five Year Parks and Recreation Plan. Rosemary Insidiosos expressed the success of the past Five Year Plan was wonderful and she is excited about the new Plan and the things it will bring to our parks. Jennifer Carpio's opinion was that now that the hard things are done, it's time to add the extra touches to make the parks even more beautiful. Public hearing closed at 7:23 p.m.

Reconvened regular meeting at 7:23 p.m.

Motion by Council Member Insidiosos, supported by Council Member P Wiles, to adopt Resolution 08-03, the Five Year Parks and Recreation Plan, to be effective from 2008-2013. All voted yes, motion carried.

Neighborhood Improvement Authority-In September of 2007 the State of MI allowed Cities to set up Neighborhood Improvement Authorities. This authority is similar to that of the DDA, in which a plan for 10-30 years must be developed by the Authority and adopted by the City Council. This plan would also allow the NIA to collect TIF dollars

like the DDA and use that money to put toward community development and projects. The only difference between the NIA and the DDA is NIA would cover the neighborhoods, or the rest of the City that the DDA does not cover.

Motion by Mayor Waite, supported by Council Member T Wiles to have City Manager Selden research the NIA program. All voted yes, motion carried.

As discussed at the last meeting, HUD is offering a program for municipalities to purchase HUD homes that have been foreclosed for \$1.00. Currently, 8 Oliver is one of those homes. This program would allow the City to purchase this home for \$1 plus closing costs and make improvements. The current value of this home is approximately \$50,000. We would be able to renovate and resell this property with the profits going back into the neighborhoods or to be used for future \$1 home renovations. These properties would be sold to low to moderate income families for minimal cost and would not be rentals.

Motion by Council Member Carpio, supported by Council Member Insidioso, to purchase 8 Oliver for \$1 plus closing costs from HUD for renovations and future sale. Roll call vote.

Yes	No	Abstain	Absent
Waite	Sutherby	None	None
Carpio	Moench		
Insidioso			
P Wiles			
T Wiles			

Motion carried.

Reminder of the Tri-Unit Fire Department budget meeting to be held on Monday, March 24, 2008 at 7:00 p.m. at the Fire Station.

The Michigan Property Tax Act requires that every local unit of government adopt poverty guidelines by resolution each year for those person's (families) that meet the Federal Poverty income guidelines and the Asset Test.

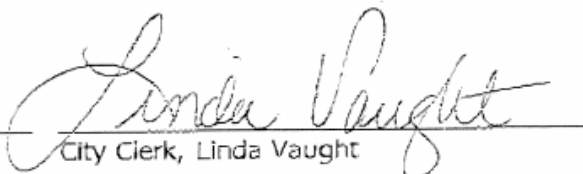
Motion by Council Member Carpio, supported by Council Member T Wiles to adopt Resolution 08-02, the Michigan Property Tax Poverty Guideline for 2008 as presented. All voted yes, motion carried.

Motion by Council Member Moench, supported by Council Member Sutherby, to authorize the payment of bills in the amount of \$67,703.47. All voted yes, motion carried.

Motion by Council Member T Wiles, supported by Council Member Carpio to adjourn the meeting. All voted yes, motion carried.

Adjourned at 8:28 p.m.

Mayor, Cliff Waite


City Clerk, Linda Vaught

Resolution of Adoption

CITY OF BANGOR

RESOLUTION # 8-03

A RESOLUTION TO ADOPT THE 5 YEAR, 2008-2013 COMMUNITY PARKS, RECREATION, OPEN SPACE, AND GREENWAY PLAN FOR THE CITY OF BANGOR.

WHEREAS, The City of Bangor, with the assistance of the Southwest Michigan Planning Commission, has developed a comprehensive plan for the future use and development of City parks, recreational areas, open space and greenway areas and,

WHEREAS, said plan has been developed with the input and guidance of City Officials and residents and,

WHEREAS, said 5 year plan has been available for public review and comment since February 11, 2008 and,

WHEREAS, the adoption of said plan will allow the City to become eligible for essential State and Federal grant resources, and further allow the residents of the City of Bangor to enjoy the greatest benefit and potential of City parks and undeveloped areas.

THEREFORE, THE CITY OF BANGOR HEREBY RESOLVES: That it approve and adopt the 5 year, 2008-2013 Community Parks, Recreation, Open Space, and Greenway Areas Plan as presented to the Council this date.

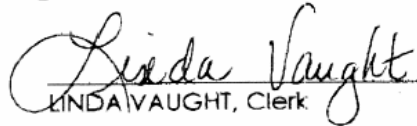
This resolution is effective immediately upon adoption by the City Council.

Moved by P. Wiles by Insidious and supported that the above Resolution be adopted.

Ayes: 7
Nays: 0
Abstaining: 0
Absent: 0

CERTIFICATION

I, Linda Vaught, the duly appointed Clerk of the City of Bangor, do hereby certify that the above is a true and exact copy of a Resolution, passed by the Bangor City Council, on March 17, 2008, the original of which is on file at the Bangor City Hall.


LINDA VAUGHT, Clerk

Letter to Regional Planning Agency



Southwest Michigan Planning Commission
185 East Main Street, Suite 701, Benton Harbor, MI 49022
Phone: 269-925-1137 x 13 • Website: www.swmpe.org
klugs@swmpe.org

March 19, 2008

K. John Egelhaaf, Executive Director
Southwest Michigan Planning Commission
185 East Main Street, Suite 701
Benton Harbor, MI 49022

Dear Mr. Egelhaaf:

Enclosed please find a copy of the adopted City of Bangor Community Parks, Recreation, Open Space, and Greenway Plan for your records. This five-year plan reflects the City's commitment to recreational planning that protects natural resources through responsible use and provides opportunities for residents of all ages and abilities to participate in healthful living.

Sincerely,

Shelley Klug
Associate Planner
Southwest Michigan Planning Commission

Letter to Van Buren County Planning Commission



Southwest Michigan Planning Commission

185 East Main Street, Suite 701, Benton Harbor, MI 49022

Phone: 269-925-1137 x 13 • Website: www.swmpc.org

klugs@swmpc.org

March 19, 2008

Ted Thar
Van Buren County Planning Commission
219 Paw Paw St., Suite 302
Paw Paw, MI 49079

Dear Mr. Thar:

Enclosed please find a copy of the adopted City of Bangor Community Parks, Recreation, Open Space, and Greenway Plan for your records. This five-year plan reflects the City's commitment to recreational planning that protects natural resources through responsible use and provides opportunities for residents of all ages and abilities to participate in healthful living.

Sincerely,

Shelley Klug
Associate Planner
Southwest Michigan Planning Commission

Classification and Description of Parks Owned by the City of Bangor

Map #	Name	Classification	Size	Primary Activities and Equipment
1	Kiwanis Park	Neighborhood Park	5.5 acres	Located in the southwest portion of the City along Maple Creek, Kiwanis Park can be accessed from the east or the west side. A nature trail through the park connects it with Veteran's Park to the north. Amenities include swings, a slide, a jungle gym, toddler playground equipment, a baseball diamond, and a picnic shelter with 10 tables and 4 fireplaces.
2	Don Mora Ball Park	Neighborhood Park	4.5 acres	Located at the corner of Pine and Center Streets, Don Mora is an open park with bleachers, modern restrooms, 2 picnic tables and a lunch stand making it well-suited for baseball, softball, and other team sports. The area is also lighted for night activities.
3	Lion's Park	Neighborhood Park	5 acres	Located along the banks of the Black River, west of the impoundment, Lion's Park is a very popular fishing site, especially during the salmon and steelhead runs. A walking bridge spans the river and a nature trail traverses the north bank. Amenities include 4 basketball hoops, a picnic shelter and tables, modern restrooms, a slide, and swings are all amenities found here.
4	Monroe Park	Mini-Park	0.1 acre	Monroe Park is along the eastern edge of Bangor's city limits. This landscaped park displays a lighted "Welcome to Bangor" sign, has 2 picnic tables, and is popular for walking visitors.
5	Charles Park	Mini-Park	0.2 acre	As the site of Bangor's historic 1925 C&O Caboose, Charles Park is a tourist focal point located on East Monroe Street. There are 4 picnic tables for visitors which often includes workers taking a lunch break from nearby businesses.
6	Northside Playground	Mini-Park	0.5 acre	Located at the corner of Second Street and North Street, this playground provides swings, a slide, and other equipment for children.
7	Lincoln Street Overlook	Mini-Park	4 acres	Known locally as "Mosquito Park," the Lincoln Street Overlook is located on the south bank of the Black River at the corner of Black River Road and Lincoln Avenue. Amenities include 4 picnic tables and 4 fire rings, and a dump station. (This park used to offer overnight camping) A nature trail connects this park to Lion's Park and then traverses further east along the bank of the old mill pond.
8	Veteran's Park	Mini-Park	0.25 acre	Located on Lafler Street, Veteran's Park has a memorial plaque, monument, and flags commemorating veterans of wars. There are 2 picnic tables and a nature trail connecting this park to Kiwanis Park to the south.
9	Kids' Place	Mini-Park	0.1 acre	Kids' Place includes toddler playground equipment and is handicapped accessible. (Where is it located?)
	Black River Heritage Trail			

Recreation Classification System

Mini-Park

Use	Specialized facilities that serve a concentrated or limited population or specific group such as tots or senior citizens.
Service Area	Less than ¼ mile radius
Desirable Size	1 acre or less
Acres per 1,000 Population	0.25 to 0.5 acres per 1,000 population
Desirable Site Characteristics	Within neighborhoods and in close proximity to apartment complexes, townhouse development or housing for the elderly.
Serving City of Bangor (In Bangor)	Monroe Park, Charles Park, Northside Playground, Lincoln Street Overlook, Veteran's Park, Kids' Place

Neighborhood Park/Playground

Use	Area for intense recreational activities such as field games, court games, crafts, playground apparatus area, skating, picnicking, wading pools, etc.
Service Area	¼ to ½-mile radius to serve a population up to 5,000 (a neighborhood).
Desirable Size	15+ acres
Acres per 1,000 Population	1 to 2 acres per 1,000 population
Desirable Site Characteristics	Suited for intense development. Easily accessible to neighborhood population geographically centered with safe walking and bike access. May be developed as a school park facility.
Serving City of Bangor (In Bangor)	Kiwanis Park, Don Mora Ball Park, Lion's Park

School Park *School Properties/Facilities*

Use	Depending on circumstances, combining parks with school sites can fulfill the space requirements for other classes of parks, such as neighborhood, community, sports complex, or special use.
Service Area	Determined by location of property
Desirable Size	Variable – depends on function
Acres per 1,000 Population	Variable
Desirable Site Characteristics	Variable – usually amenable to team sports such as baseball, football, soccer, etc.
Serving City of Bangor? (In Bangor)	

Community Park

Use	Area of diverse environmental quality. May include areas suited for intense recreational facilities, such as athletic complexes, large swimming pools. May be an area of natural quality for outdoor recreation, such as walking, viewing, sitting, picnicking. May be any combination of the above, depending upon site suitability and community need.
Service Area	Several neighborhoods. 1 to 2 mile radius.
Desirable Size	25+ acres
Acres per 1,000 Population	5 to 8 acres per 1,000 population
Desirable Site Characteristics	May include natural features such as water bodies and areas suited for intense development. Easily accessible to neighborhood served.
Serving City of Bangor	No City Parks meet the size criteria for this classification

Regional/Metropolitan Park

Use	Area of natural or ornamental quality for outdoor recreation such as picnicking, boating, fishing, swimming, camping, and trail uses; may include play areas.
Service Area	Several communities. 1 hour driving time.
Desirable Size	200+ acres
Acres per 1,000 Population	5 to 10 acres
Desirable Site Characteristics	Contiguous to or encompassing natural resources.
Serving City of Bangor	Silver Beach, St. Joseph; North Beach, South Haven; South Beach, South Haven; Van Buren State Park (VB County)

Regional Park Reserve

Use	Area of natural quality for nature-oriented outdoor recreation such as viewing and studying nature, wildlife habitat, conservation, swimming, picnicking, hiking, fishing, boating, camping, and trail uses. May include active play areas. Generally, 80% of the land is reserved for conservation and natural resource management with less than 20% used for recreation development.
Service Area	Several communities. 1 hour driving time.
Desirable Size	1,000+ acres; sufficient area to encompass the resource to be preserved and managed.
Acres per 1,000 Population	Variable
Desirable Site Characteristics	Diverse or unique natural resources such as lakes, streams, marshes, flora, fauna, and topography.
Serving City of Bangor	Sarrett Nature Center, Kalamazoo Nature Center

Linear Park

Use	Area developed for one or more varying modes of recreational travel such as hiking, biking, snowmobiling, horseback riding, cross-country skiing, canoeing and pleasure driving. May include active play areas.
Service Area	No applicable standard.
Desirable Size	Sufficient width to protect the resource and provide maximum use.
Acres per 1,000 Population	Variable
Desirable Site Characteristics	Built or natural corridors such as utility rights-of-way, bluff lines, vegetation patterns, and roads that link other components of the recreation system or community facilities such as school, libraries, commercial areas and other park areas.
Serving City of Bangor	Kal-Haven Trail

Special Use

Use	Areas for specialized or single purpose recreational activities such as golf courses, nature centers, marinas, zoos, conservatories, arboreta, display gardens, arenas, outdoor theaters, gun ranges, or downhill ski areas, or areas that preserve, maintain, and interpret buildings, sites, and objects of archeological significance. Also plazas or squares in or near commercial centers, boulevards, parkways.
Service Area	No applicable standard.
Desirable Size	Variable depending on desired size.
Acres per 1,000 Population	Variable
Serving City of Bangor	Bangor Public Library, Bangor; The Cable House, Bangor; Paintball Ranch, Bangor Township; Timber Ridge (ski resort), Gobles; YMCA, South Haven; Deer Forest, Coloma; Binder Park Zoo, Battle Creek; Kalamazoo Public Museum, Kalamazoo; Maritime Museum, South Haven; Van Buren County Historical Museum, Hartford; South Haven Skate Park, South Haven

Facility Development Standards

An evaluation of the City of Bangor (Done in 2002) using facility development standards would indicate no deficiencies since there are fewer than 2,000 people living within the City. However, since it is important to the City to serve as the center of recreation for the surrounding townships, coupled with the fact that the public schools are located in the City, the population figure for the entire area (12,818) will be used to determine the needs of the area. During the development of any recreation plan, it is crucial to take a close look at recreational facilities and opportunities already in place, both public and private, as well as those facilities located within the community and in greater region. Establishing such an inventory will keep duplication to a minimum while potentially identifying gaps in the provision and delivery of leisure services. Using facility development standards as a basis for comparison, the City of Bangor and the surrounding communities are very well equipped for the relative size and rural nature of the area. Bangor is deficient in only two areas: badminton courts (2) and tennis courts (2). In fact, the Bangor area possesses extra youth basketball courts (2), football fields (1), ¼ mile running tracks (1), multiple recreation courts (1), and skeet and trap fields (1).

It should be noted that Van Buren County does not provide any county owned or operated park facilities except for the fairgrounds located near Hartford. Consequently, a greater responsibility is placed on the individual local units of government to deliver the appropriate leisure services for its residents.

Facility Development Standards and Analysis

Activity/Facility	Standard	Need	Existing	Deficiency
Badminton	1/5,000	2	0	2
Basketball (Youth)	1/5,000	2	4	(2)
Basketball (High School)	1/5,000	2	2	0
Handball	1/20,000	-	-	-
Ice Hockey	1/100,000	-	-	-
Tennis	1/2,000	6	4	2
Volleyball	1/5,000	2	2	0
Baseball (Official)	1/5,000	2	2	0
Baseball (Little League)	1/5,000	2	2	0
Field Hockey	1/20,000	-	-	-
Football	1/20,000	-	1	(1)
Soccer	1/10,000	1	1	0
Golf-Driving Range	1/50,000	-	-	-
¼ Mile Running Track	1/20,000	-	1	(1)

Softball	1/5,000	2	2	0
Multiple Recreation Court	1/10,000	1	2	(1)
Trails	1 system	1	1	0
Archery Range	1/50,000	-	-	-
Skeet and Trap Field	1/50,000	-	1	(1)
Golf	1/25,000	-	-	-
Swimming Pools	1/20,000	-	-	-

List of Vegetation in Lion's Park

Streambank	
Brilliantissima chokeberry	Aronia arbutifolia 'brilliantissima'
Common buttonbush	Cephalanthus occidentalis
Eastern redbud	Cercis canadensis
Red osier dogwood	Cornus sericea
American cranberrybush	Viburnum trilobum
Biologs and bank within 12" of upper biolog	
Cardinal flower	Boneset
Blue flag iris	Joe pye weed
Woolgrass	Ironweed
Turtlehead	Marsh blazing star
Monkeyflower	Swamp rose mallow
Fox sedge	Culver's root
Brown fox sedge	Tussock sedge
Swamp milkweed	
River bullrush	
Sweet flag	
Blue vervain	
Raingarden	
Swamp Milkweed	Eupatorium maculatum
Porcupine sedge	Iris versicolor
Joe-pye weed	Monarda fistulosa
Blue flag iris	Physostegia virginiana
Bergamot	Verbena hastata
Obedient plant	Viburnum trilobum
Blue vervain	
American cranberrybush	
Asclepias incarnata	
Carex hystericina	

City of Bangor Policy Governing City Parks

Presented July 2, 2007, Revised July 12, 2007, Revised and Adopted July 16, 2007

This policy is intended to cover City property as described herein and set reasonable standards of use by all visitors to the City parklands and natural areas.

Parks - Identified

1. Lion's Park
2. Kiwanis Park
3. Kids Place
4. N. Center Street Park
5. Veterans Park
6. Monroe Park
7. Charles Park

Natural Areas - Identified

1. Mill Pond, City owned land along the Black River east of Second Street to the City limits
2. Maple Creek, City owned land from south corporate border to the Black River, except Kiwanis Park
3. Black River, City owned land along the Black River west of Hamilton Street
4. Lincoln Street Memorial Park

Reservation of use by General Public

Any group may use certain areas, facilities or services within park property to the exclusion of others by making application and being granted a permit by the City Council or its authorized agent. The City of Bangor shall adopt fees for reservations and use of parklands and natural areas, as it may deem necessary from time to time. The City reserves the right to require group or event insurance accepting liability for their group/event and naming the City as an 'also insured' party. The amount of insurance limits may vary depending upon the type of activity which may be taking place under the direction of the group/event.

Hours

- A. Lions Park and Kiwanis Park shall be open to public use from 7:00 a.m. until 11:00 p.m. between Memorial Day and Labor Day. During other times of the year, they shall be open between 8:00 a.m. and 9:00 p.m. Special hours may be allowed for specific events or reservations, which are granted permission to use the park by the City Council or the City Clerk.
- B. Other parks shall be open to the public between 8:00 a.m. and 10:00 p.m. year round.

- C. No person or vehicle shall remain on park property except during the hours open to public use unless allowed by the terms of a permit issued by the City Council.
- D. It shall be unlawful for any person to enter upon park property, which has been designated closed to public use or entry.
- E. The Council or its authorized Agent (Police Department personnel, the City Manager, or the Mayor may close any park property or any portion thereof for such period of time as may be deemed to be required in the interest of public health and safety.
- F. It shall not be lawful for any person, except employees working in such park or natural area to enter therein before the hour above named for the opening or remain therein after the hour above named for the closing thereof; provided, however, that the city manager may grant permission to any person to enter into and remain within a public park or playground until not later than 12:00 midnight where it appears that such closing hour will be beneficial to the city and its inhabitants, and where the public peace, safety and welfare may be promoted. Any person entering into or remaining within the parks or playgrounds in accordance with such permission shall not be deemed unlawfully therein.

Alcoholic Beverages

No person shall bring into or sell, purchase, consume or dispense any alcoholic liquors or controlled substances within the park system; parklands and natural areas.

Animals, brought in and Living in Park or Natural Area

Please refer to the section titled "Protection of Wildlife: Animals and birds"

Balloons, Airplanes and Parachutes

No person shall make any ascent, descent or landing in any balloon, airplane, parachute, or other airborne vehicle on park property without first obtaining written permission from the Council or its agent.

Boating

No person shall bring into, use or navigate any boat, yacht, raft or other powered floating devices upon any watercourse lagoon, lake, pond or slough located on park property, except at such time or place as may be provided or designated for such purpose by the Council. Canoes and Kayaks may be navigated on the Black River and may use the launch sites provided at City Parks as long as such is in compliance with the laws of the State of Michigan and this policy.

Camping

Camping, tents, trailers, overnight outings and similar activities are not permitted on city parklands or natural areas. Camping may, however, be allowed by permission of the Council or its agent. Camping, tents, pop-ups, canopies, or other similar devices may be used during the day by a reserved group/event but must be removed each day by park closing. Families that use the park for picnicking or family day events may be allowed to erect canopies or tents during their visit as long as such is removed by park closing hours. The City may grant some groups/events permission to set up their tents, canopies or other such devices the night before their event. The City reserves the right to designate location for tents. Canopies or other such devices.

Destruction of Plant Life and Natural Surroundings

It shall be unlawful for any person while on park or natural area property to:

- A. Cut, remove or destroy any tree, sapling, seedling, bush or shrub, whether dead or alive, or chip, blaze, box girdle, trim or otherwise deface or injure any tree or shrubs, or break or remove any branch, foliage, flower or any tree or shrub, or pick, gather, uproot, remove or destroy any flower, plant or grass, whether dead or alive.
- B. Destroy, remove or cause to be removed any sod, earth, humus, peat, boulders, gravel or sand, fossil or any geologic object without written permission of the Council or its agent.
- C. Roll, throw, push or in any manner propel or cause any object to go over the edge of any ledge or cliff, except such items normally used in climbing, when being used in the course of climbing.

Discharge of Water or Waste Unlawful

It shall be unlawful to discharge any personal, commercial, or industrial water or any polluted or contaminated waste upon parklands, natural areas, sidewalks, streets, alleys or gutters within the City of Bangor at any time.

Enforcement

- A. Any person violating the provisions of this policy which concern the unlawful use, operation and parking of motor-driven vehicles, will be deemed responsible for a municipal civil infraction or guilty of a misdemeanor as provided by the Uniform Traffic Code promulgated pursuant to 257.951 et seq.; provided, further, that the State of Michigan may hereafter change or amend these penalties and civil sanctions.
- B. Any person who violates these policies not concerning the use of a motor-driven vehicle is deemed responsible for a municipal civil infraction.

Fees and Charges

- A. It shall be unlawful for any person to use any facility, land or area for which a fee or charge has been established by the Council without payment in advance.
- B. It shall be unlawful for any person, group, firm or corporation to charge an admission fee or charge for entry or use of any park property or facility without first obtaining written permission from the Council in accordance with Article III of this chapter.

Firearms

No person shall at any time bring on park property, have in his possession, discharge, or set off anywhere upon park property a revolver, pistol, shotgun, rifle, firearm, bow or other weapon that discharges projectiles either by air, explosive substance or any other force; provided, however, that this section shall not apply to any deputy sheriff, police officer, park ranger or other duly appointed law enforcement officer while carrying out the duties and responsibilities of their position. Other City ordinances governing the use of firearms also apply to city park land and natural areas.

Fires

- A. It shall be unlawful for any person while on park or natural area property to:

- B. Willfully set or causes to be set on fire any tree, woodland, brushland, grassland or meadow within or upon park or natural area property.
- C. Build any fire upon park property except within the fireplaces, receptacles or open spaces approved and designated for such purpose, without prior written permission of the Council or its agent. No person shall build or maintain a fire within fireplaces, receptacles or open spaces approved or designated for such purposes in a careless or negligent manner likely to endanger any person or property.
- D. Drop, throw or otherwise scatter lighted matches, burning cigars, cigarettes, tobacco paper or other inflammable material within or upon park property in a careless or negligent manner likely to endanger any person or property.

Fireworks

No person shall fire, discharge or have in his possession any rocket, flare, firecracker, torpedo, squib, or other fireworks or any substance of an explosive or incendiary nature on park property unless the Council or its agent shall have authorized same by the issuance of a permit therefor.

Gambling on Cards or Other Games of Chance Prohibited

It shall be unlawful for any person or persons within or on any parklands or natural areas to play any game of cards, dice, or other game of chance for money, or to bet money on the result of any such game or games.

Littering Unlawful

No person shall deposit any rubbish, refuse or litter in or upon the park system, except as the same shall be deposited in receptacles provided for that purpose by the department of public works.

Noise - Disturbing to the Public Peace and Good Order

- A. No person or persons shall act in such a manner or make such noise or disturbance, which disturbs the good order, peace, health or safety of the City of Bangor or its inhabitants. For purposes of this article, the word "person" shall be interpreted to include partnership associations, and corporations. Each of the following acts is hereby declared unlawful and prohibited, but this enumeration shall not be deemed to be exclusive, namely:
 - B. No person shall intentionally use obscene, lewd, or libelous speech or language in a public place so that such language is heard by others; to be punishable under this section, such speech must be found not to be protected free expression under the United States Constitution and the Constitution for the State of Michigan.
 - C. No person shall create, assist in creating, permit, continue, or permit the continuance of any unreasonably loud, disturbing, unusual, or unnecessary noise which either annoys, disturbs, injures, or endangers the comfort, repose, health, peace, or safety of others within any park or natural area of the City of Bangor. Each of the following acts is hereby declared unlawful and prohibited, but this enumeration shall not be deemed to be exclusive, namely:
 - 1. The playing of any radio, phonograph, or musical instrument of any character in such a manner or with such volume, at any time or place as to annoy or disturb the quiet, comfort, or repose of persons in any office, dwelling, hotel, or other type of residence or any person in the vicinity

2. Yelling, shouting, whistling, loud talking or singing on the public streets, particularly between the hours of 10:00 p.m. to 6:00 a.m., or at any other time or place so as to annoy, or disturb the quiet comfort or repose of persons in any office, dwelling, hotel or any other type of residence or of any persons in the vicinity.
3. The use of any drums, loud speakers, musical devices, or other instruments or devices for the purpose of attracting attention by the creation of noise to any performance, show or display unless such use is known and granted by permission of the Council or its agent.
4. The firing of firearms, firecrackers, air guns, or other combustible substances for the purpose of making a noise or disturbance.
5. The practicing and training of any drum corps, band, orchestra, or other musical organization, or the practice by individuals on the various musical instruments, which produce a noise or disturbance, and which annoy the peace, repose, and comfort of the residents in the vicinity thereof.

D. Please refer to the section titled "Personal Conduct."

E. Exceptions: None of the prohibitions herein shall apply to or be enforced against any police, fire or ambulance vehicle while engaged upon necessary public emergency business; necessary excavations or repairs of bridges, streets, or highways by or on behalf of the City, County or State during the night, when the public safety, welfare, and convenience renders it impossible to perform such work during the day; the reasonable use of stationary amplifiers or loudspeakers in the course of public addresses which are noncommercial in character.

Motor-driven Vehicles

It shall be unlawful for any person to:

- A. Operate a motor-driven vehicle of any kind or nature except on roads or designated parking areas.
- B. Operate a motor-driven vehicle on any park road at a speed exceeding 15 miles per hour or at any speed greater than that posted. A person who violates this section is responsible for a civil infraction.
- C. Operate any motor-driven sled, ski, toboggan or snowmobile on park property except where provided or designated for such purpose by the Council. A person who violates this section is responsible for a civil infraction.
- D. Continuously cruise in or on any motor-driven vehicle in or through any areas of park property. To "continuously cruise" is herein defined as the repeated driving of a motor-driven vehicle in or through park property without stopping for the purpose of using park property. A person who violates this section is responsible for a civil infraction.

Peddling and Soliciting

- A. It shall be unlawful for any person to peddle or solicit business of any nature whatsoever, to distribute hand-bills or other advertising matter, or to post signs on park property, unless first authorized in writing by the Council or its agent.
- B. No person shall publicly beg, solicit any subscriptions, or take up collections for any purpose whatsoever in the park system without first receiving written permission from the city manager to do so. Those groups/events reserving the park may collect donations and handout literature related to their activity. However, such groups/events are responsible for cleaning up any discarded materials left on the grounds.
- C. This section does not apply to religious or political activities associated with constitutionally legal activities. Such groups/events must be licensed as a charity in the state of Michigan, be incorporated as a non-profit organization, church or school, or have official designation as a federal IRS 501-c-3 or 501-c-6 organization.

Personal Conduct

It shall be unlawful to engage in any violent, abusive, loud, boisterous, vulgar, lewd, wanton, obscene or otherwise disorderly conduct, or to disturb or annoy others while in or on park property.

- A. No person shall willfully act in an obscene, disorderly or riotous manner in a public place so that his conduct is observed by another person and disturbs the peace, good order, health or safety of the other person.
- B. Please refer to the section above titled "Noise - Disturbing to the public peace and good order."

Protection of Property

It shall be unlawful for any person while on park or natural area property to:

- A. Willfully destroy, deface, alter, change or remove any monument, stone marker, benchmark, stake, post or blaze, marking or designating boundary line, survey line, or reference point.
- B. Cut, break, mark upon or otherwise injure any building, equipment, bridge, table, wall, fountain, lamppost, fence, gate hedge, or other structure.
- C. Deface, destroy, cover or remove any placard, notice or sign, whether permanent or temporary, posted or exhibited within or upon park property.
- D. Take or carry away, or attempt to take or carry away, any property without written permission from the owner thereof.

Protection of Wildlife: Animals and Birds

- A. It shall be unlawful for any person while on park property to:
- B. Cause or allow any animal or fowl to run at large or to permit them to annoy or disturb other persons.
- C. Bring, drive, lead or carry any dog or other animal or pet which is unleashed or upon a leash more than eight feet in length and not under immediate control of an adult person; except for animals

used in designated shows or programs authorized by the Council or its authorized agent. Except that at Kids Place Park, no dogs are allowed.

- D. Owners of dogs shall be held responsible for the presence of their dogs in the park system.
- E. Owners of dogs shall be held responsible for removing (bagging) all dog waste and placing such bagged waste in appropriate waste receptacles provided on the park lands or shall take such bags home for disposal.
- F. Any person owning or harboring a dog that is permitted to be in the park system and which shall disturb any birds or animals therein shall be deemed guilty of a violation of this policy.
- G. Cause or allow any animal or fowl to enter any public building or to be upon any designated beach area except a trained and working leader dog; or to allow his animal or fowl to enter any water body contained therein.
- H. Abuse, mistreat, or neglect any animal or fowl which may be found in the park or natural area. No person shall kill, disturb or molest any birds or birds' nests or any fish or animal within, belonging to or being in the parks or playgrounds.
- I. Hunt, trap, catch, wound or kill, or treat cruelly, attempt to trap, catch, wound, or kill any bird or animal, molest or rob any nest of any bird or any lair, den or burrow or any animal on park property; provided, however, that fishing may be permitted on park property in accordance with Council rules, the laws of the State of Michigan and the rules of the Department of Natural Resources of the State of Michigan in areas designated for such purposes by the Council.

Skate Park

In addition to the policies cited above the following shall apply.

- A. The Skate Park at Lions Park shall not be open for use until 8:00 a.m. in the morning regardless of the day of the week or the time of the year.
- B. No persons shall use bicycles or powered vehicles or devices other than skateboards and in-line skates on the skate park ramps, platforms, devices, or grounds.

Swimming, Bathing and Wading

It shall be unlawful for any person while on park property to bathe in any watercourse, lagoon, pond, or slough located on park property. Wading in any waterway within the City corporate limits is only at your risk. It is not encouraged and should not occur without direct adult supervision.

Trails

No person shall ride any powered vehicles or devices on any trail or pathway in within or on city parklands or natural areas. Such are intended for pedestrian, bicycle or in-line skating traffic.

Unlawful Obstruction

No person, group, firm or corporation shall by force, threats, intimidation, fencing, enclosing, or by any other means prevent or obstruct any person from entering, leaving or making full use of any park property; provided, however, that any group may use certain areas, facilities or services within park property to the exclusion of others

Use of Loudspeaker

It shall be unlawful to use a loud speaker, public address system or amplifier on park property unless written permission has been obtained from the Council or its agent.

Vendors

Food or other vendors that may be allowed to use the park lands during a reserved group's events shall be licensed by the County Health Department. The City reserves the right to set and collect a fee, payable to the city, for any vendor that be a part of any group/event which has reserved the park land.

Expulsion or Exclusion of Violators from Park System

The city manager, police officers, and authorized personnel shall have the authority and power to exclude and expel any person from any public park, playground or recreation area or facility, when such person violates any of the provisions or requirements of applicable ordinances, or rules and regulations. Such expulsion or exclusion shall be for a period not to exceed ten (10) days. The refusal or failure of any person to leave the park system when ordered so to do by the city manager, police officers, authorized personnel or the return to the park system by the person so expelled or excluded before the expiration of the period of expulsion or exclusion shall be deemed to be a violation of these rules and regulations and the person may be responsible for a municipal civil infraction. Such refusal may also be considered failure to obey an order to leave if given by a police office and may subject the person to other consequences. The provisions as set forth in this rule shall be construed to be cumulative to all penalties provided.