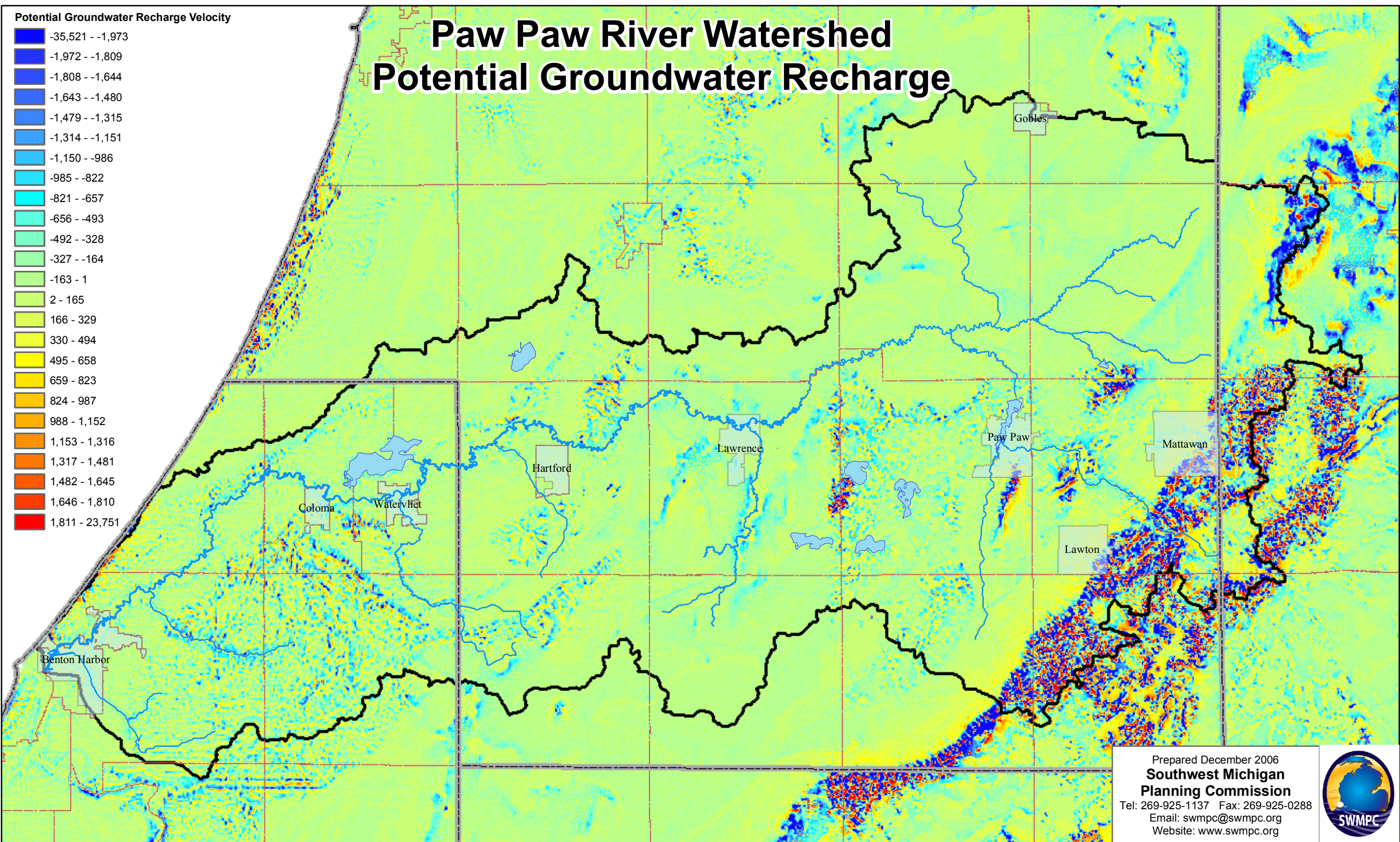
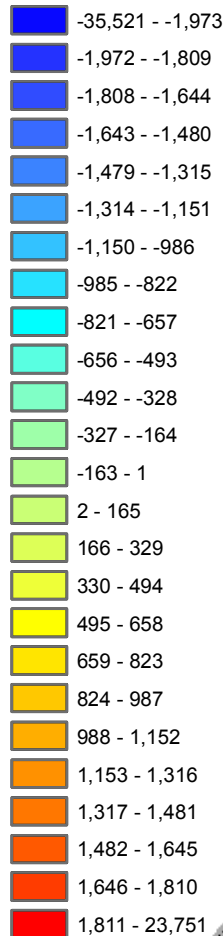


# Paw Paw River Watershed Potential Groundwater Recharge

Potential Groundwater Recharge Velocity



Prepared December 2006  
**Southwest Michigan  
 Planning Commission**  
 Tel: 269-925-1137 Fax: 269-925-0288  
 Email: [swmpc@swmpc.org](mailto:swmpc@swmpc.org)  
 Website: [www.swmpc.org](http://www.swmpc.org)

