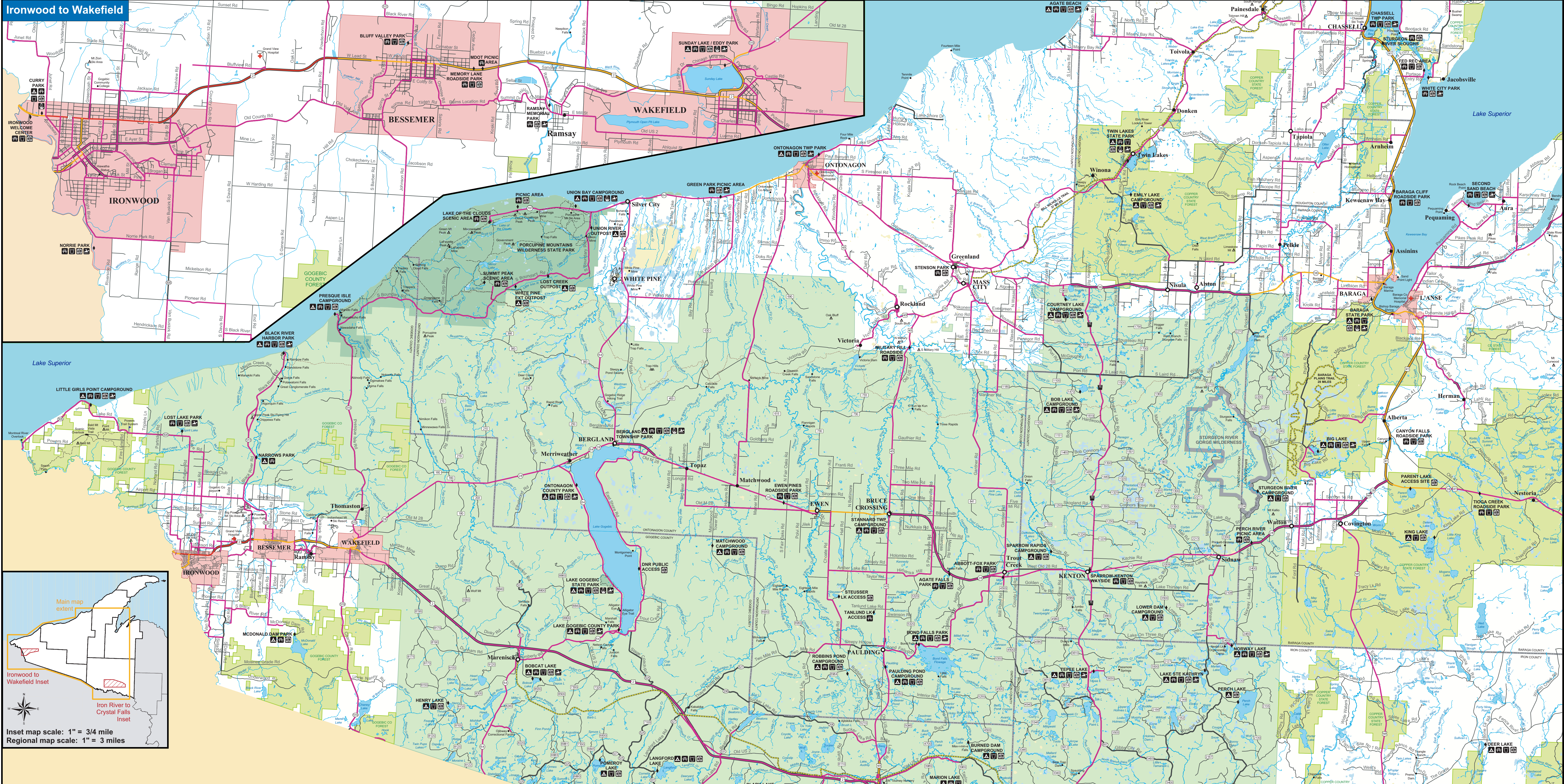


Ironwood to Wakefield



Main map extent

Ironwood to Wakefield Inset

Iron River to Crystal Falls Inset

Inset map scale: 1" = 3/4 mile
Regional map scale: 1" = 3 miles

The inset map shows the regional context of the Ironwood to Wakefield area, highlighting its location within the larger Iron River basin. It includes a north arrow and scale information for both the inset and the main map.

Iron River to Crystal Falls

