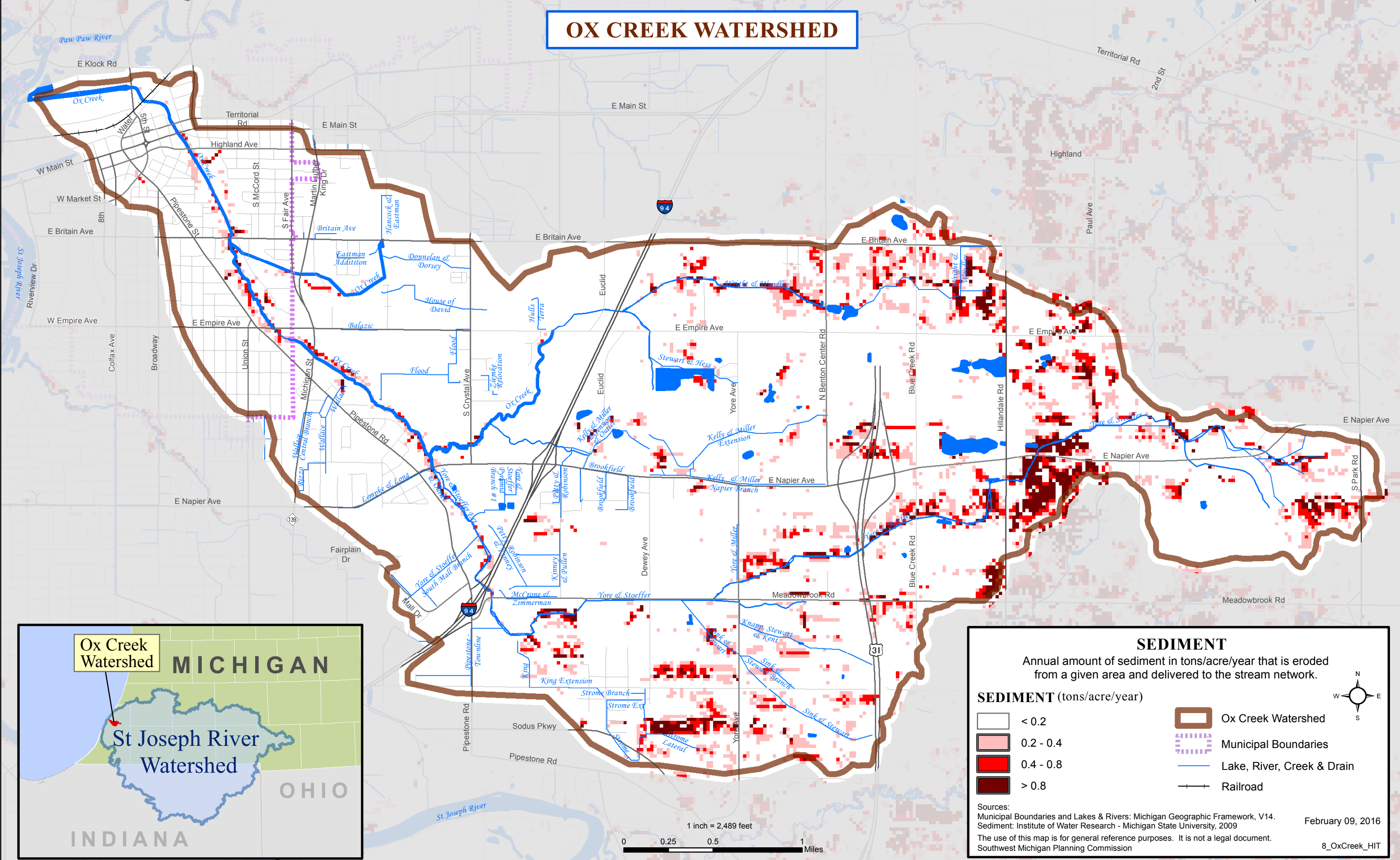


OX CREEK WATERSHED



SEDIMENT
Annual amount of sediment in tons/acre/year that is eroded from a given area and delivered to the stream network.

<p>SEDIMENT (tons/acre/year)</p> <ul style="list-style-type: none"> < 0.2 0.2 - 0.4 0.4 - 0.8 > 0.8 	<ul style="list-style-type: none"> Ox Creek Watershed Municipal Boundaries Lake, River, Creek & Drain Railroad
--	--

Sources:
Municipal Boundaries and Lakes & Rivers: Michigan Geographic Framework, V14.
Sediment: Institute of Water Research - Michigan State University, 2009.
The use of this map is for general reference purposes. It is not a legal document.
Southwest Michigan Planning Commission

February 09, 2016
8_OxCreek_HIT

1 inch = 2,489 feet
0 0.25 0.5 1 Miles