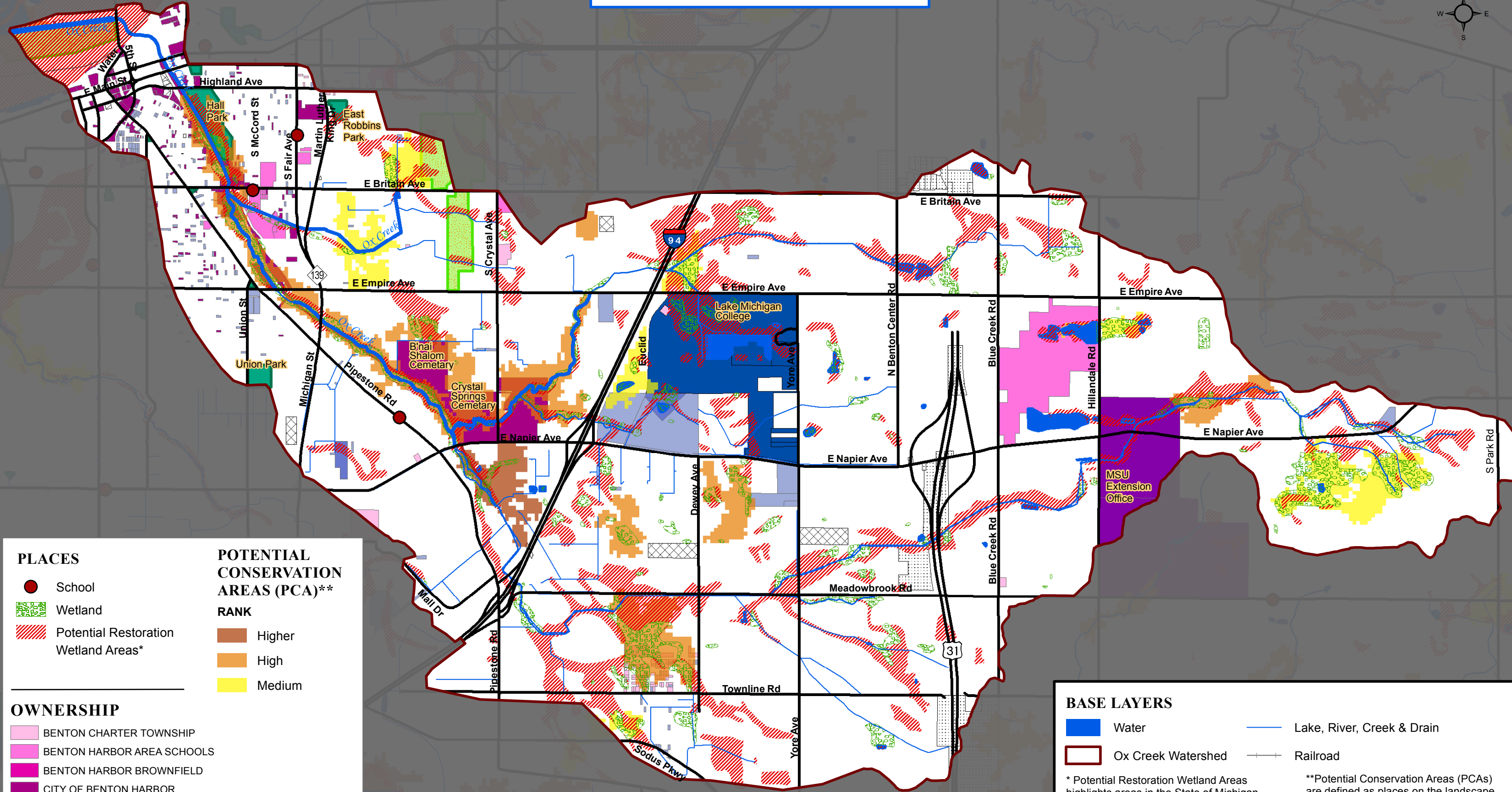


OX CREEK WATERSHED



PLACES

- School
- Wetland
- Potential Restoration Wetland Areas*

POTENTIAL CONSERVATION AREAS (PCA)**

RANK

- Higher
- High
- Medium

OWNERSHIP

- BENTON CHARTER TOWNSHIP
- BENTON HARBOR AREA SCHOOLS
- BENTON HARBOR BROWNFIELD
- CITY OF BENTON HARBOR
- BERRIEN COUNTY
- BERRIEN COUNTY DRAIN COMMISSIONER
- LAKE MICHIGAN COLLEGE
- MICHIGAN STATE UNIVERSITY
- MICHIGAN DEPARTMENT OF TRANSPORTATION
- MICHIGAN STATE OF
- UTILITY COMPANIES

BASE LAYERS

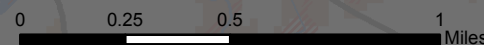
- Water
- Lake, River, Creek & Drain
- Ox Creek Watershed
- Railroad

* Potential Restoration Wetland Areas highlights areas in the State of Michigan that area likely to have conditions suitable for wetland restoration efforts.

**Potential Conservation Areas (PCAs) are defined as places on the landscape dominated by native vegetation that have various levels of potential for harboring high quality natural areas and unique natural features.

Sources:
 Base Layers: Michigan Geographic Framework, V14.
 Ownership: Parcels, Berrien County, 2015
 Golf Course and Parks: SWMPC, 2014
 Wetlands: MDEQ 2014.
 PCA: SWMPC 2007

The use of this map is for general reference purposes. It is not a legal document.
 Southwest Michigan Planning Commission



February 23, 2016

1 inch = 2,417 feet

23_OxCreek_Sink