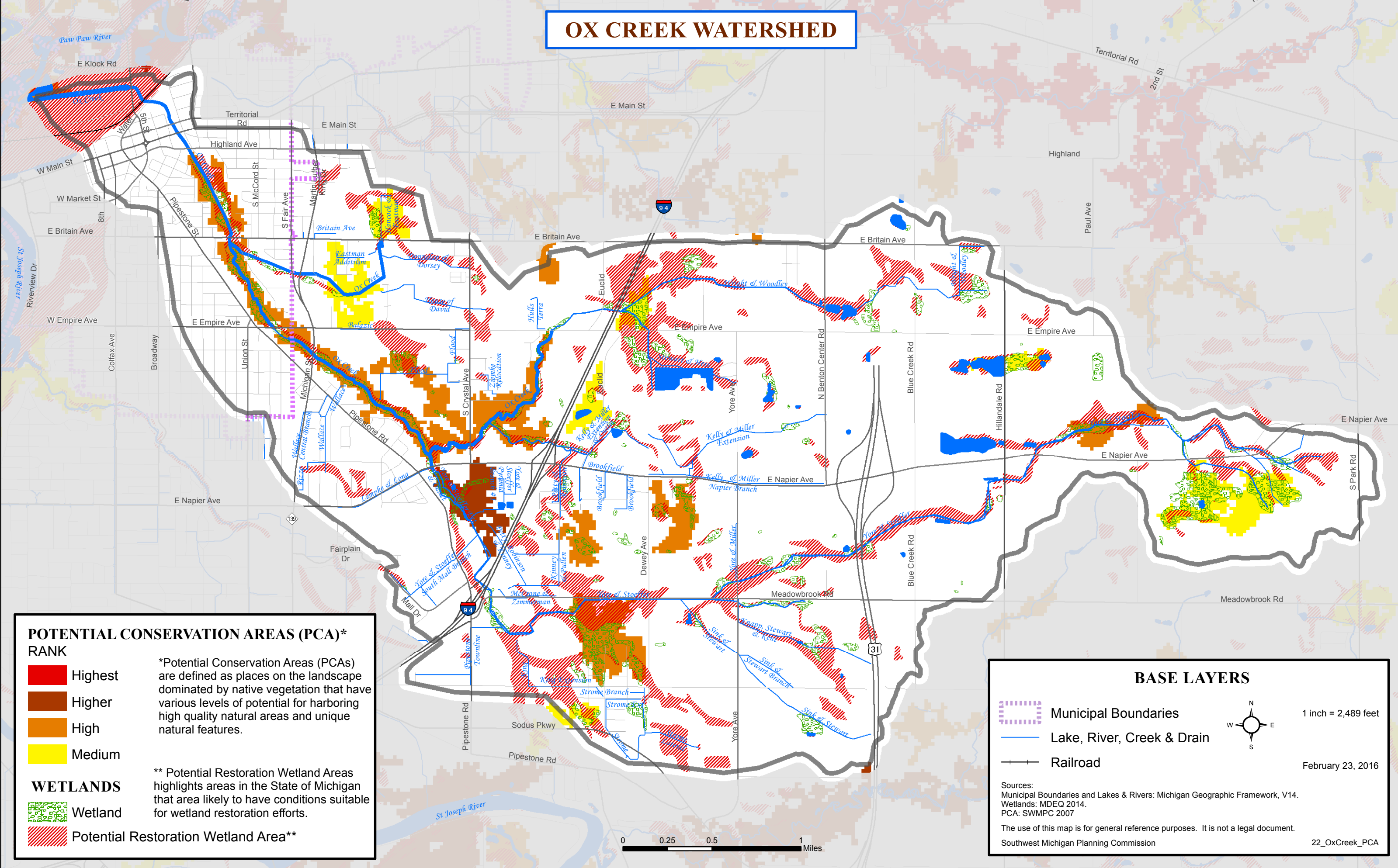


# OX CREEK WATERSHED



**POTENTIAL CONSERVATION AREAS (PCA)\***  
**RANK**

- Highest
- Higher
- High
- Medium

**WETLANDS**

- Wetland
- Potential Restoration Wetland Area\*\*

\*Potential Conservation Areas (PCAs) are defined as places on the landscape dominated by native vegetation that have various levels of potential for harboring high quality natural areas and unique natural features.

\*\* Potential Restoration Wetland Areas highlights areas in the State of Michigan that area likely to have conditions suitable for wetland restoration efforts.

**BASE LAYERS**

- Municipal Boundaries
- Lake, River, Creek & Drain
- Railroad

N  
W — E  
S

1 inch = 2,489 feet

February 23, 2016

Sources:  
Municipal Boundaries and Lakes & Rivers: Michigan Geographic Framework, V14.  
Wetlands: MDEQ 2014.  
PCA: SWMPC 2007

The use of this map is for general reference purposes. It is not a legal document.  
Southwest Michigan Planning Commission

22\_OxCreek\_PCA

