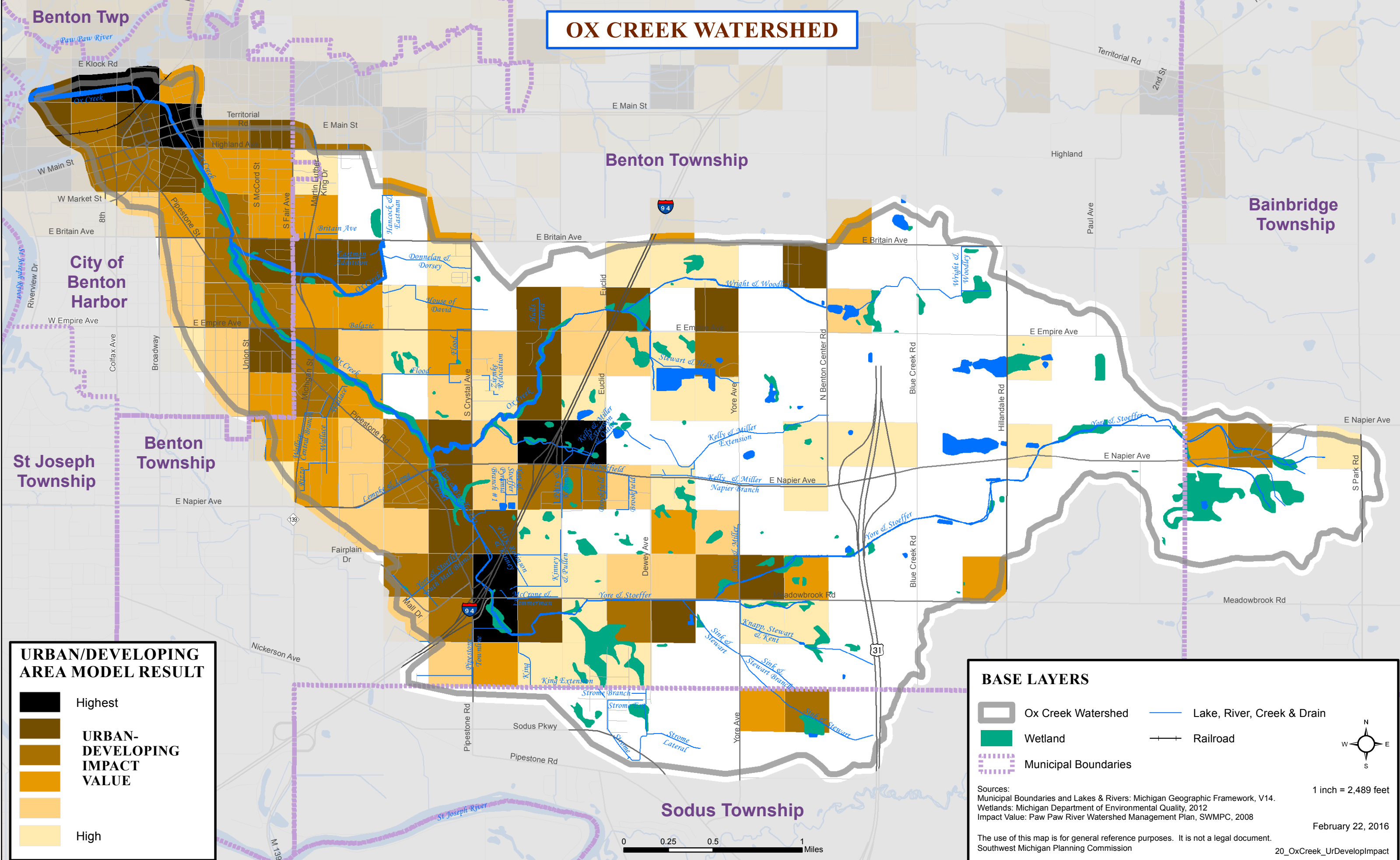


OX CREEK WATERSHED



URBAN/DEVELOPING AREA MODEL RESULT

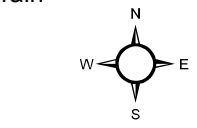
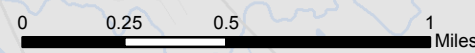
- Highest
- URBAN-DEVELOPING IMPACT VALUE**
-
-
- High

BASE LAYERS

- Ox Creek Watershed
- Wetland
- Municipal Boundaries
- Lake, River, Creek & Drain
- Railroad

Sources:
 Municipal Boundaries and Lakes & Rivers: Michigan Geographic Framework, V14.
 Wetlands: Michigan Department of Environmental Quality, 2012
 Impact Value: Paw Paw River Watershed Management Plan, SWMPC, 2008

The use of this map is for general reference purposes. It is not a legal document.
 Southwest Michigan Planning Commission



1 inch = 2,489 feet

February 22, 2016