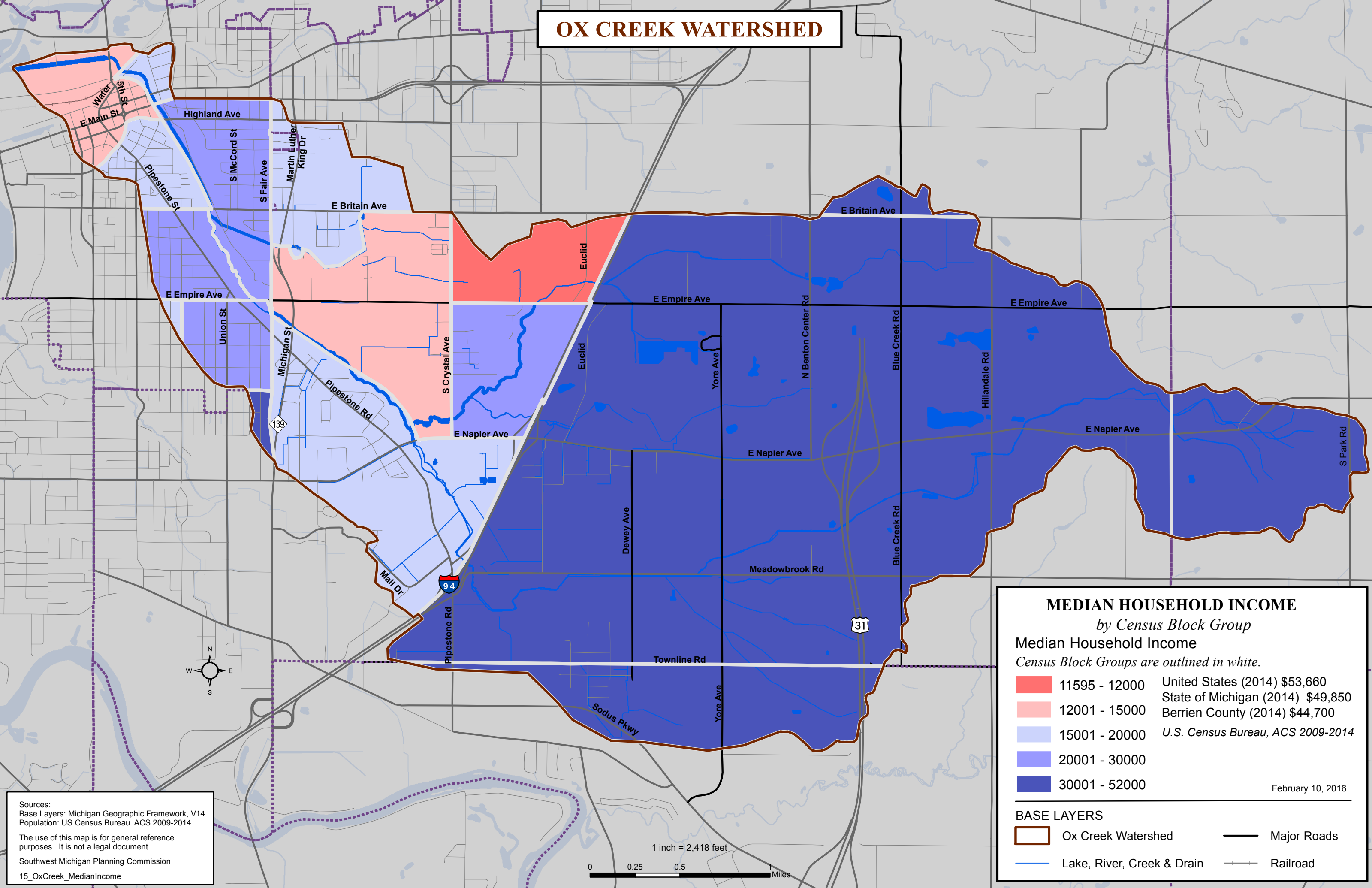


OX CREEK WATERSHED



MEDIAN HOUSEHOLD INCOME

by Census Block Group

Median Household Income
Census Block Groups are outlined in white.

	11595 - 12000	United States (2014) \$53,660
	12001 - 15000	State of Michigan (2014) \$49,850
	15001 - 20000	Berrien County (2014) \$44,700
	20001 - 30000	<i>U.S. Census Bureau, ACS 2009-2014</i>
	30001 - 52000	

February 10, 2016

BASE LAYERS

	Ox Creek Watershed		Major Roads
	Lake, River, Creek & Drain		Railroad

Sources:
 Base Layers: Michigan Geographic Framework, V14
 Population: US Census Bureau. ACS 2009-2014

The use of this map is for general reference purposes. It is not a legal document.

Southwest Michigan Planning Commission
 15_OxCreek_MedianIncome

