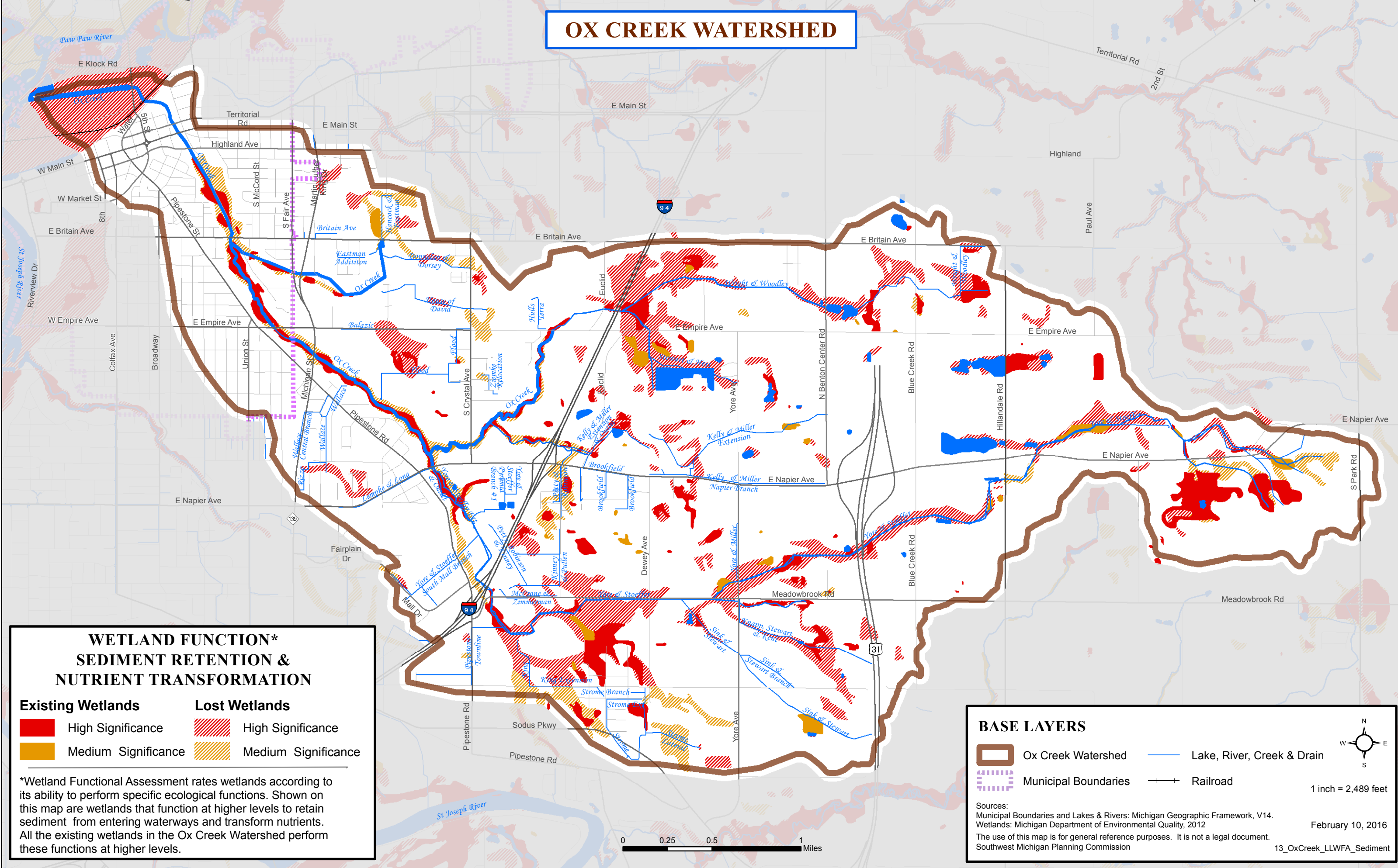


OX CREEK WATERSHED



WETLAND FUNCTION*
SEDIMENT RETENTION & NUTRIENT TRANSFORMATION

| | |
|---|---|
| <p>Existing Wetlands</p> <ul style="list-style-type: none"> High Significance Medium Significance | <p>Lost Wetlands</p> <ul style="list-style-type: none"> High Significance Medium Significance |
|---|---|

*Wetland Functional Assessment rates wetlands according to its ability to perform specific ecological functions. Shown on this map are wetlands that function at higher levels to retain sediment from entering waterways and transform nutrients. All the existing wetlands in the Ox Creek Watershed perform these functions at higher levels.

BASE LAYERS

| | |
|---|---|
| <ul style="list-style-type: none"> Ox Creek Watershed Municipal Boundaries | <ul style="list-style-type: none"> Lake, River, Creek & Drain Railroad |
|---|---|

1 inch = 2,489 feet

February 10, 2016

Sources:
Municipal Boundaries and Lakes & Rivers: Michigan Geographic Framework, V14.
Wetlands: Michigan Department of Environmental Quality, 2012
The use of this map is for general reference purposes. It is not a legal document.
Southwest Michigan Planning Commission

