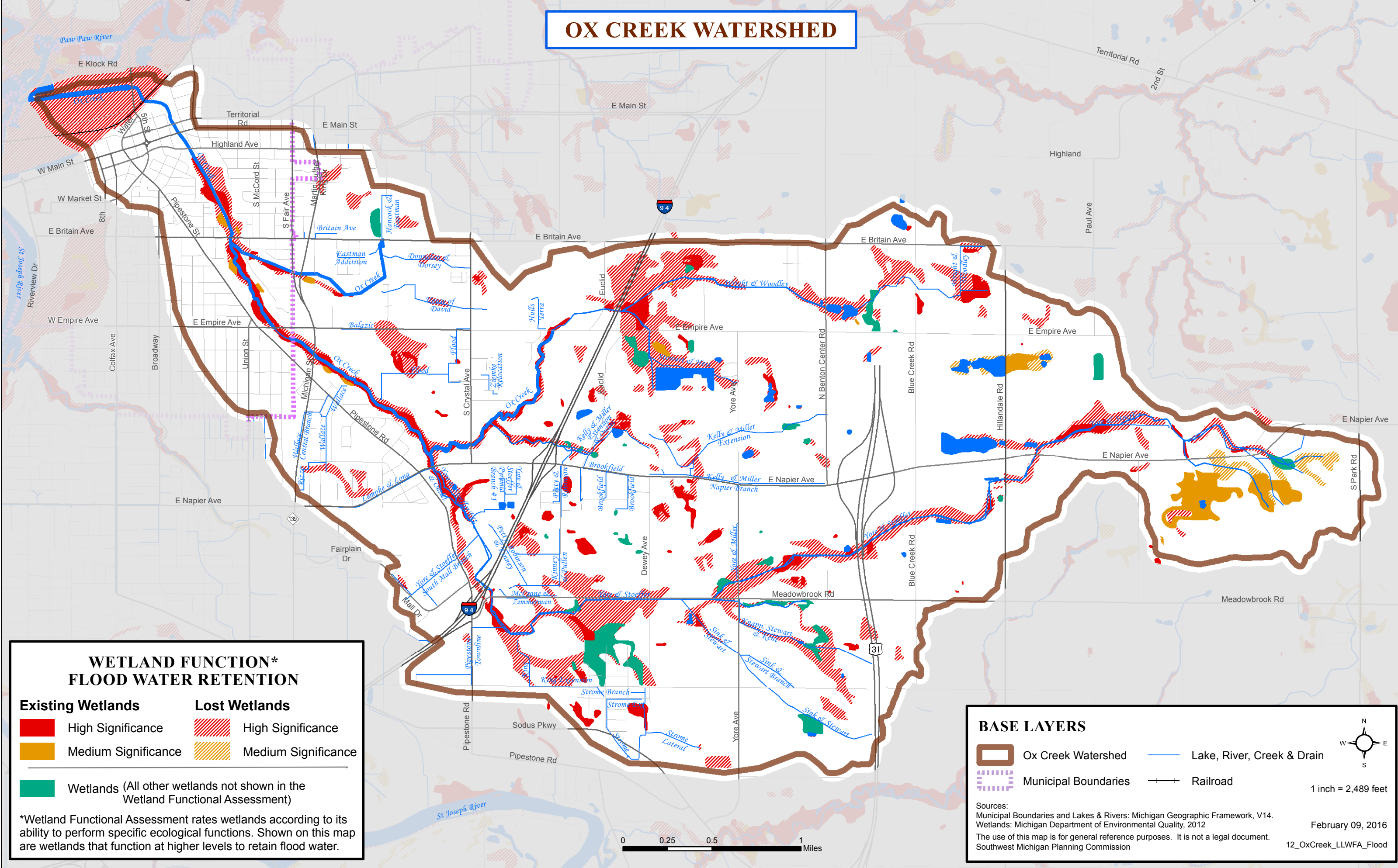


OX CREEK WATERSHED



**WETLAND FUNCTION*
FLOOD WATER RETENTION**

| | |
|---|---|
| <p>Existing Wetlands</p> <ul style="list-style-type: none"> High Significance Medium Significance Wetlands (All other wetlands not shown in the Wetland Functional Assessment) | <p>Lost Wetlands</p> <ul style="list-style-type: none"> High Significance Medium Significance |
|---|---|

*Wetland Functional Assessment rates wetlands according to its ability to perform specific ecological functions. Shown on this map are wetlands that function at higher levels to retain flood water.

BASE LAYERS

| | |
|---|---|
| <ul style="list-style-type: none"> Ox Creek Watershed Municipal Boundaries | <ul style="list-style-type: none"> Lake, River, Creek & Drain Railroad |
|---|---|

1 inch = 2,489 feet

February 09, 2016

12_OxCreek_LLWFA_Flood

Sources:
Municipal Boundaries and Lakes & Rivers: Michigan Geographic Framework, V14.
Wetlands: Michigan Department of Environmental Quality, 2012
The use of this map is for general reference purposes. It is not a legal document.
Southwest Michigan Planning Commission

