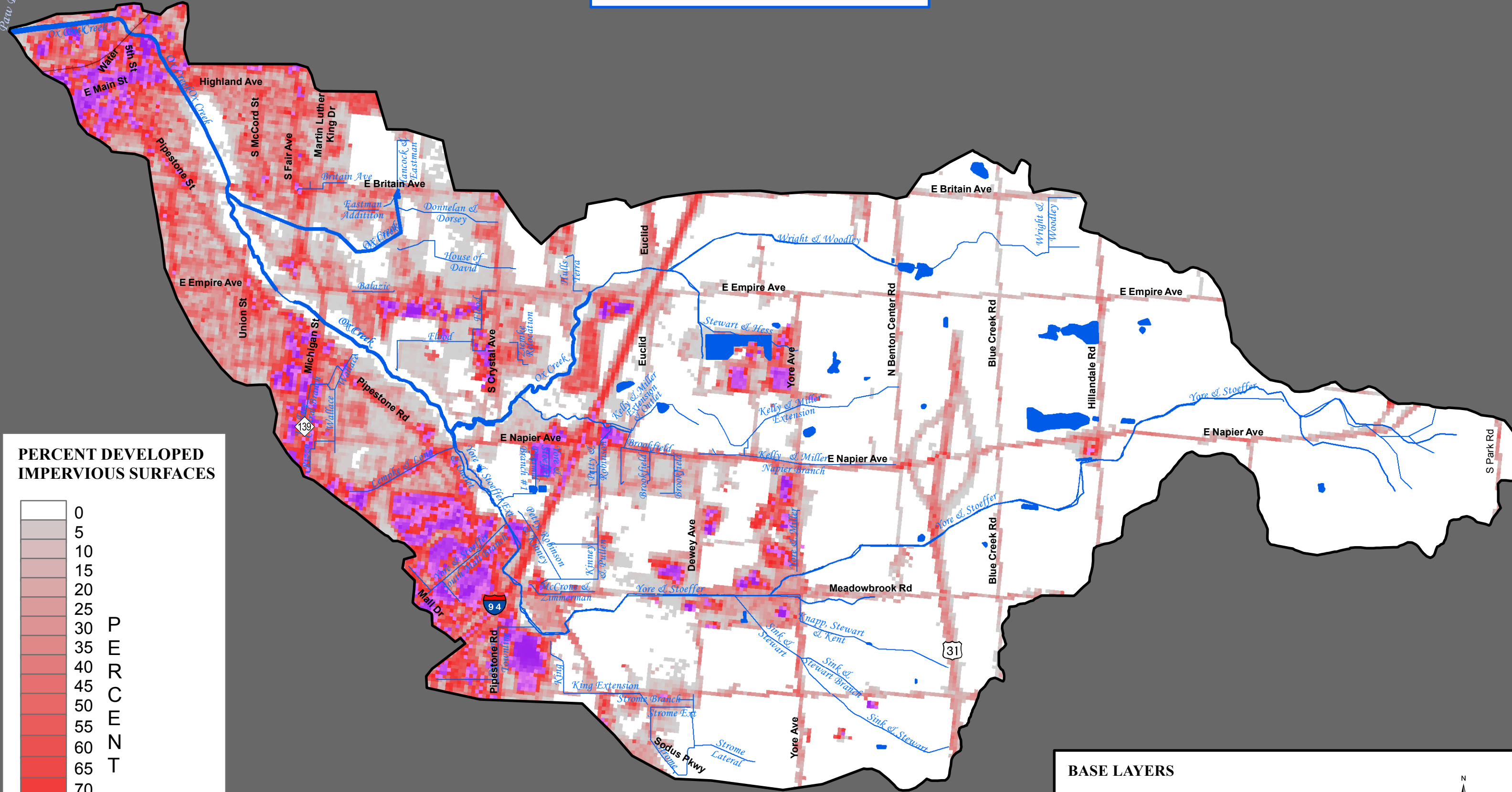
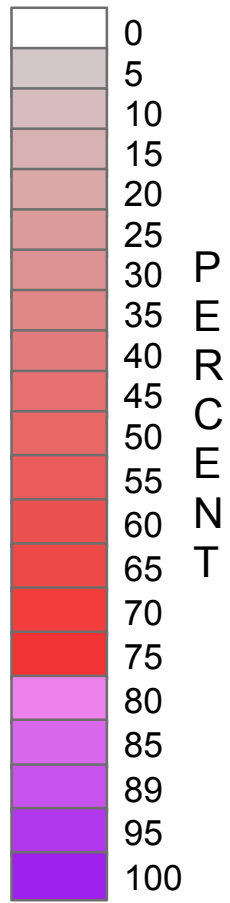


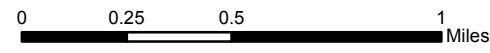
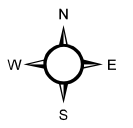
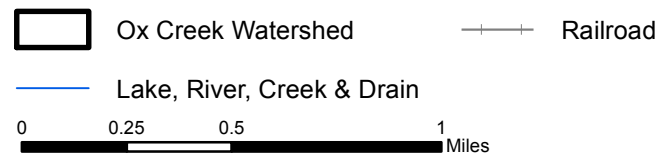
OX CREEK WATERSHED



PERCENT DEVELOPED IMPERVIOUS SURFACES



BASE LAYERS



Sources:
 Base Layers: Michigan Geographic Framework, V14.
 Impervious Surfaces; National Land Data NLCD 2011
 The use of this map is for general reference purposes. It is not a legal document.
 Southwest Michigan Planning Commission

February 09, 2016

1 inch = 2,417 feet

11_OxCreek_Impervious