

Wetlands Work For Us

*Keeping Water Clean,
Protecting Our Communities*

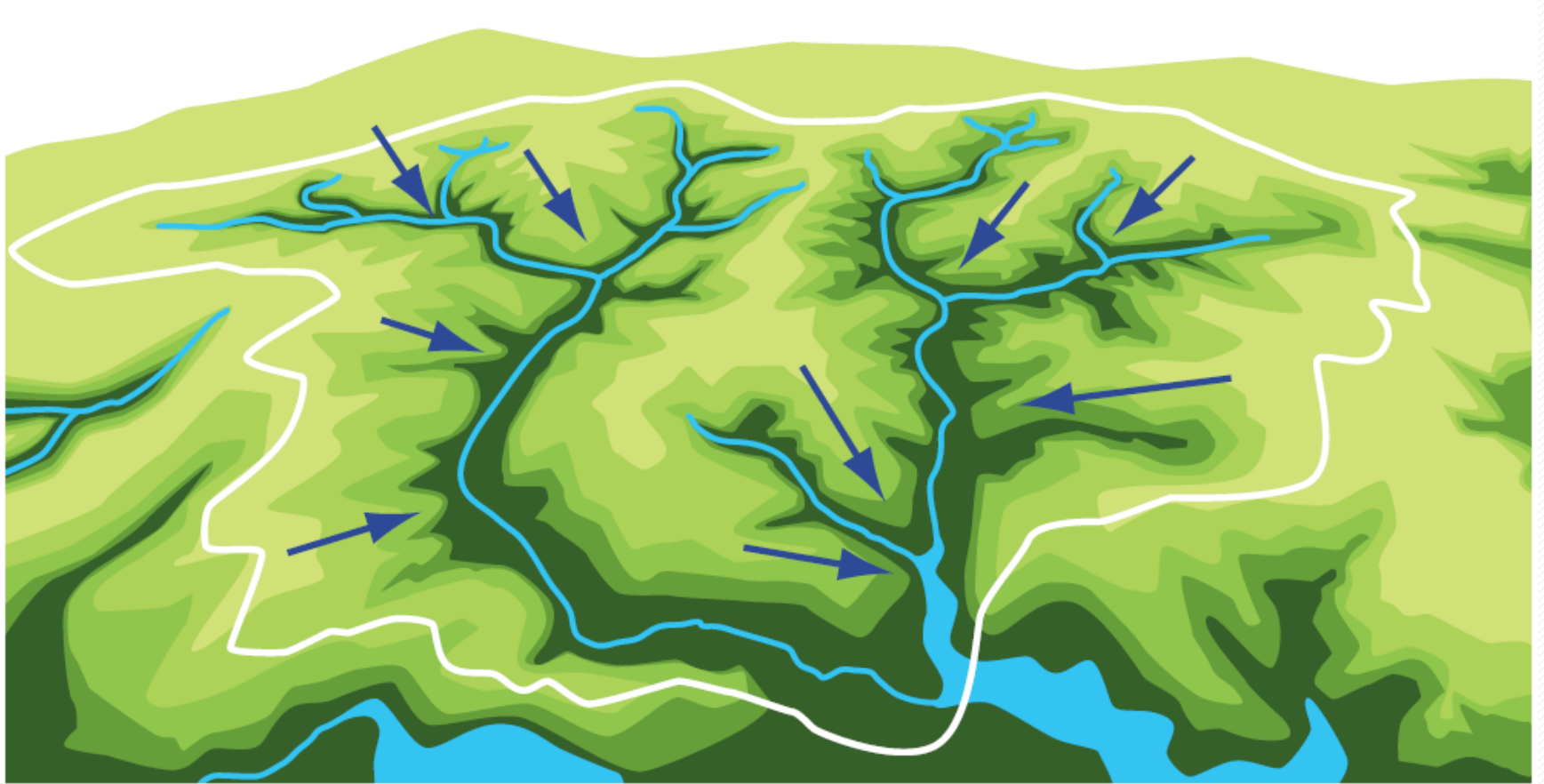


Matt Meersman

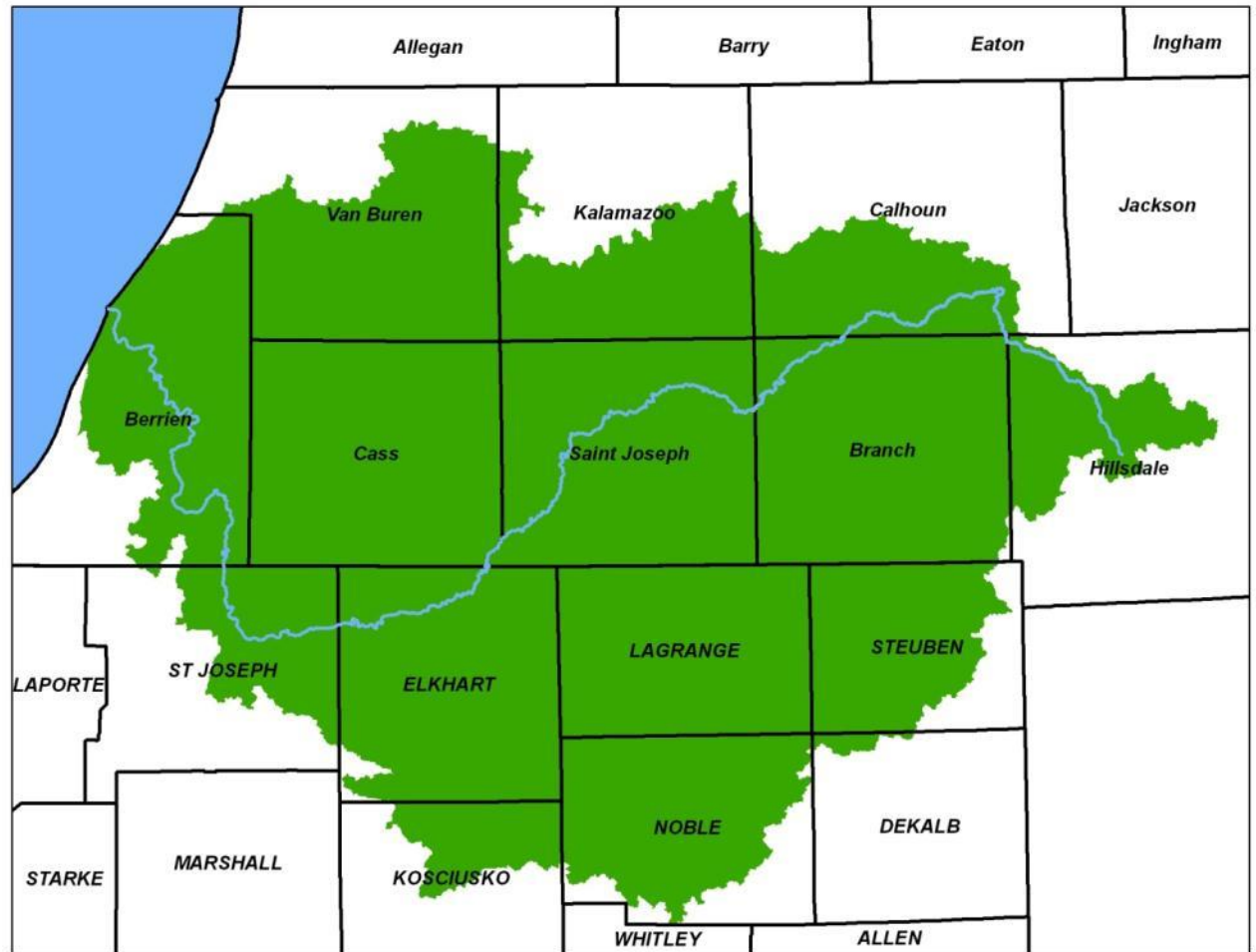
Friends of the St. Joe River



WATERSHED



St. Joseph River Watershed



Who Cares About Clean Water?







St. Joseph Harbor



Year	General Condition	Total Soil Erosion in SJRW (m ³ /year)	Total Sediment at Harbor Mouth (m ³ /year)
1830	Pre-Development	55,000	21,000
1978	Agriculture	650,000-902,000	52,000 - 60,000
1992	Agriculture & Urbanization	676,000	44,000 (25% from Paw Paw River Watershed)



Kroger Food & Drugs

OPEN HOURS



What about wetlands?





Marsh



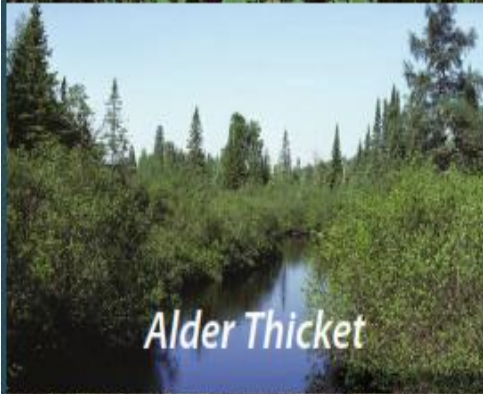
Fen



Sedge Meadow



Low Prairie



Alder Thicket



Open Bog



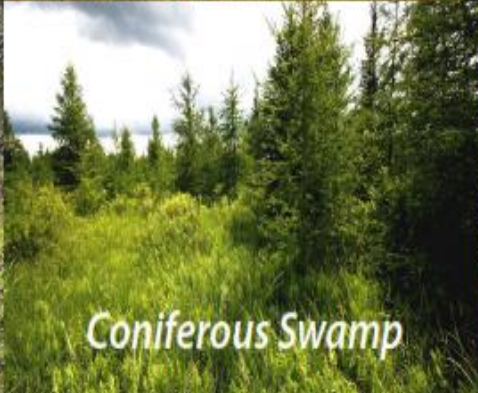
Ephemeral Pond



Shrub Carr



Coniferous Bog



Coniferous Swamp



Floodplain Forest

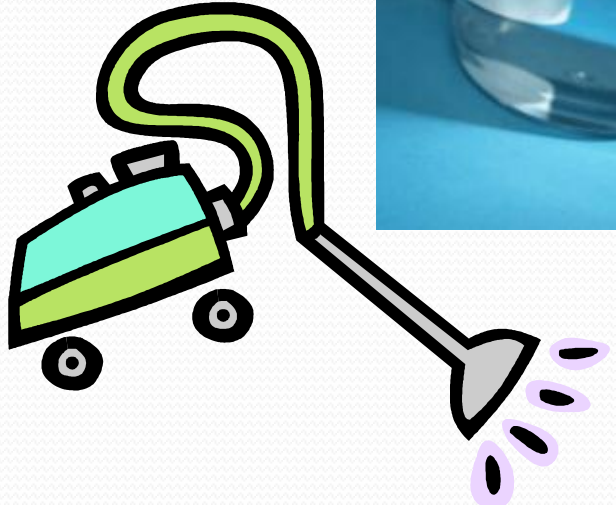


Lowland Hardwood Swamp

Legal Definition...



We know they're important for wildlife, but...



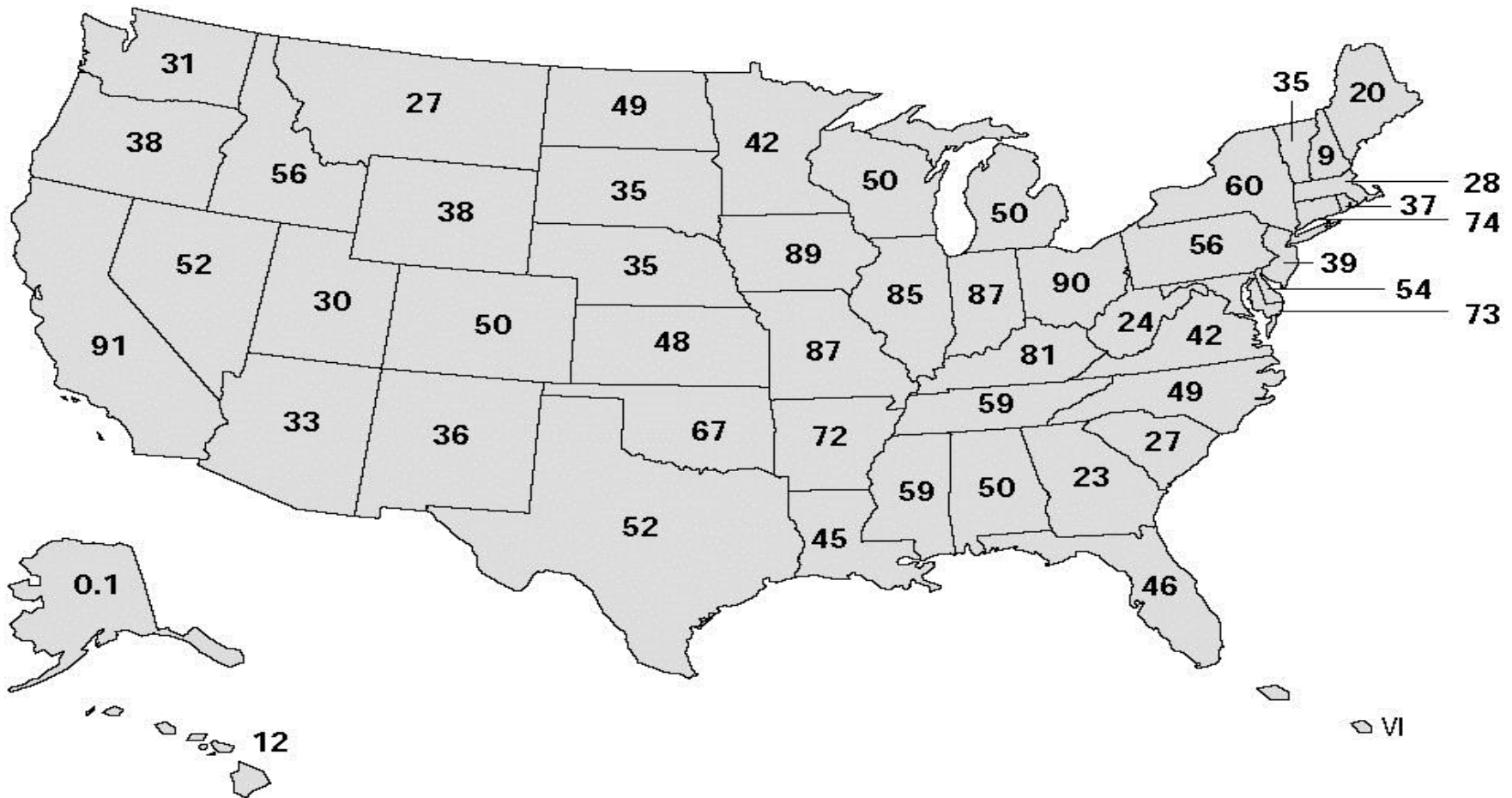


**STATE
ENVIRONMENTAL CONSERVATION
POLICE**

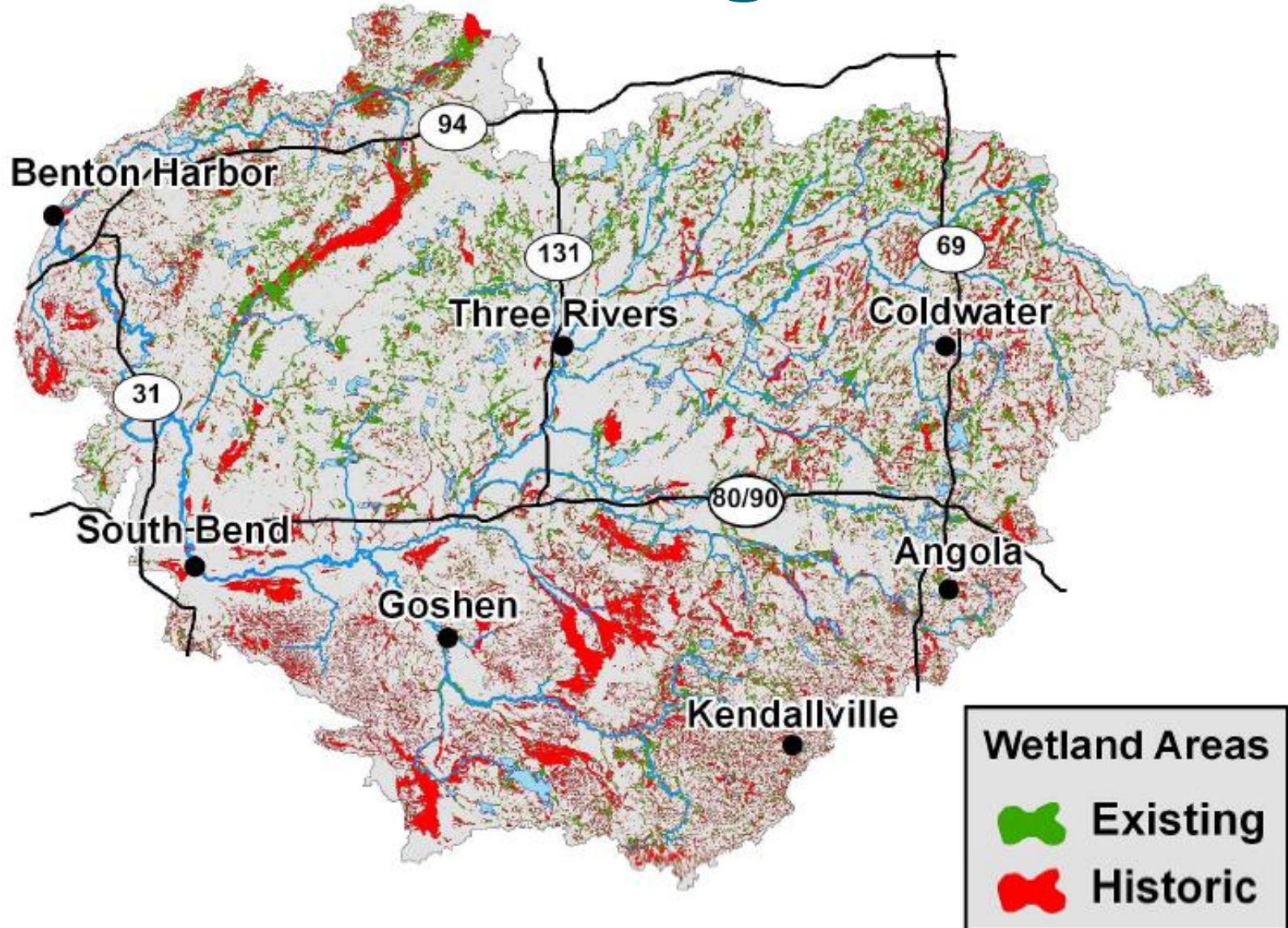
F250

We've *Lost* A LOT!

Percentage of Wetland Acreage Lost,
1780s-1980s



53% Loss Right Here!





What We Know Now...

Area	Acreage Loss	Floodwater Storage Loss	Sediment Retention Loss	Fish Habitat Loss	Overall Water Quality Loss	Overall Habitat Loss
Cass County	28%	37%	36%	50%	32%	28%
St. Joseph County	92%	92%	87%	98%	92%	93%
Elkhart River	71%	72%	57%	82%	67%	70%
St. Joseph River Watershed	53%	59%	49%	69%	52%	55%

- **Water Quality-** Floodwater Storage, Sediment Retention, Nutrient Transformation, Shoreline Stabilization, Streamflow Maintenance, Carbon Sequestration, and E coli Retention
- **Wildlife Habitat-** Fish, Waterfowl, Interior Forest Bird, Shorebird, and Amphibian Habitat.

How can we use this information?

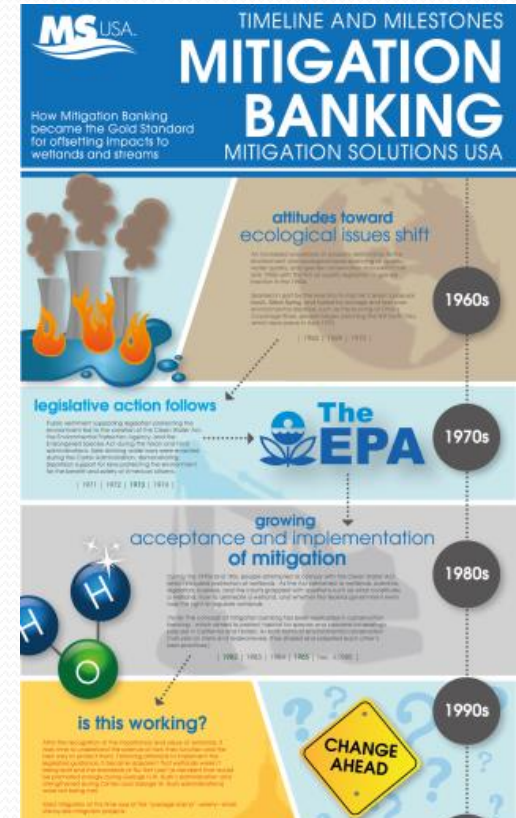
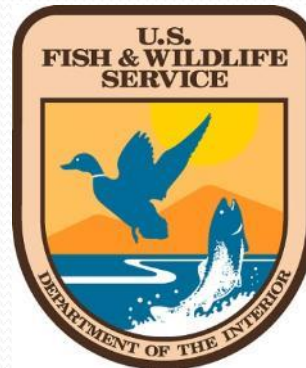


Wetlands
Reserve
Program



Decision Making

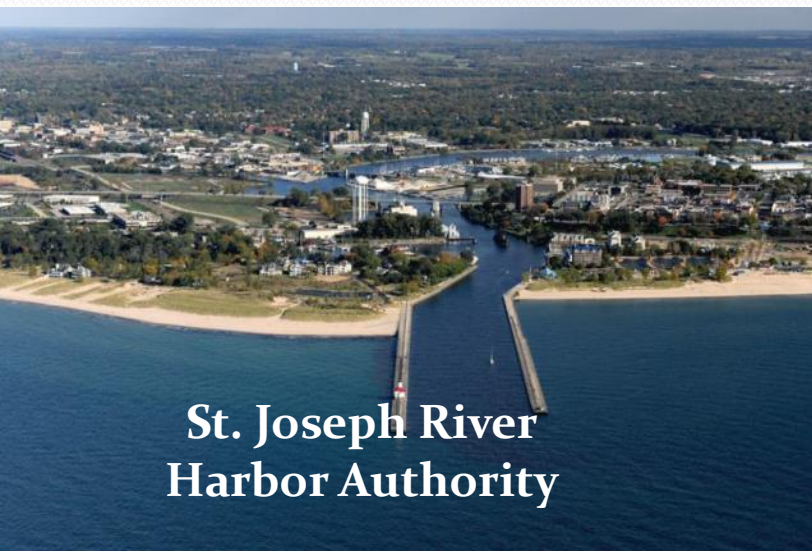
- Strengthen grant funding requests
- Assist agencies in evaluating projects
- Identifying mitigation sites



Helping Our Partners



St. Joseph River Basin Commission



St. Joseph River Harbor Authority





Questions?



Village of Paw Paw

Acknowledgements

Wetland Enhancement Methodology

- Chad Fizzell, Michigan Dept. of Environmental Quality
fizzellc@michigan.gov or 517-335-6928
- Jeremy Jones, Michigan Dept. of Environmental Quality
JONESJ28@michigan.gov or 517-241-3218



Municipal Planning and Zoning Techniques

- Marcy Colclough, Southwest MI Planning Commission
ColcloughM@swmpc.org or 269-925-1137



For more information:

- Wetland Partnership Project
www.fotsjr.org/wetlandpartnership
- Friends of the St. Joe River
www.FotSJR.org



Or contact:

- Matt Meersman
paddleheadz@gmail.com