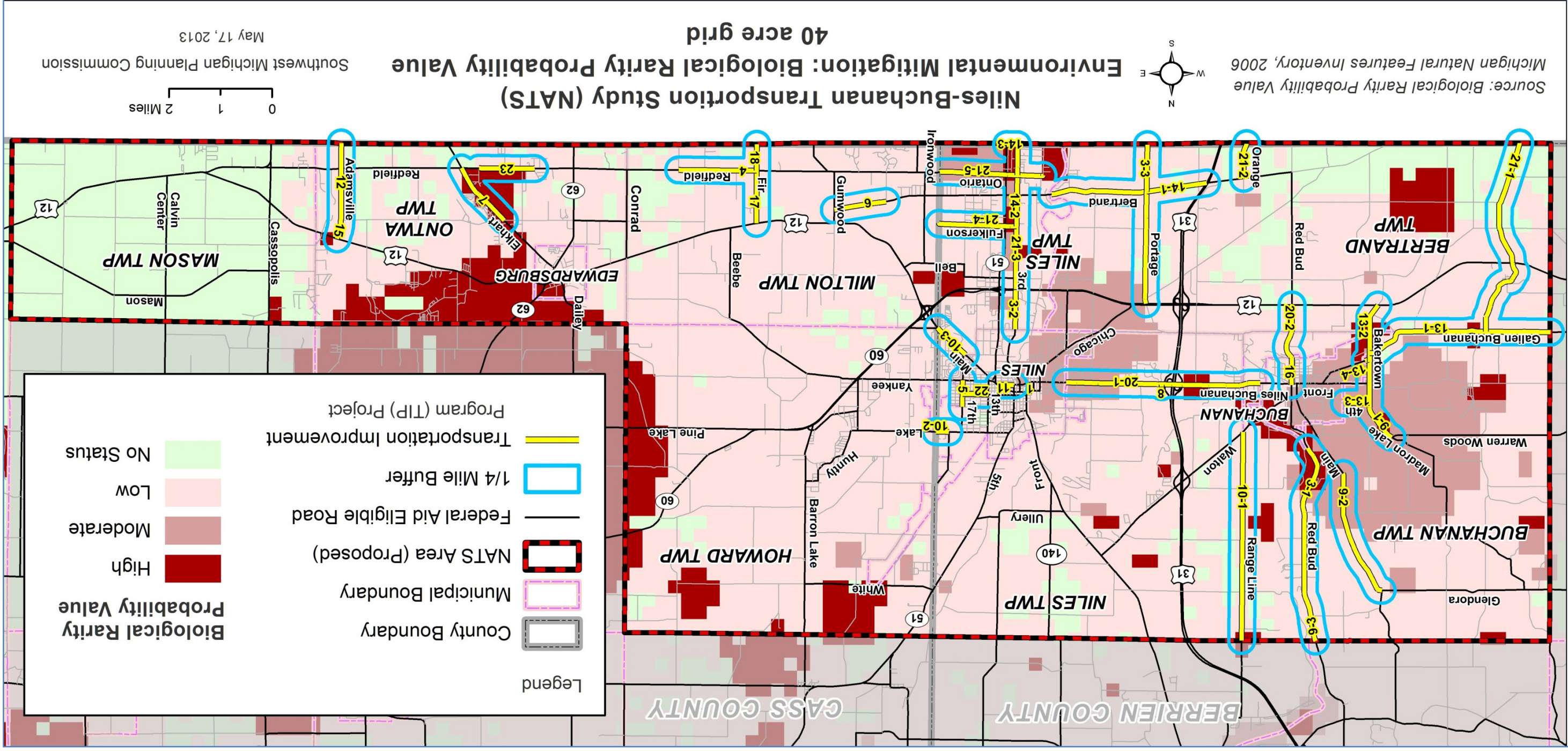
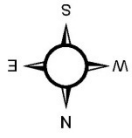


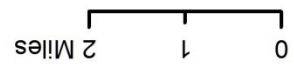
Map 1 - Environmental Mitigation: Biological Rarity Probability Value



Source: Biological Rarity Probability Value Michigan Natural Features Inventory, 2006

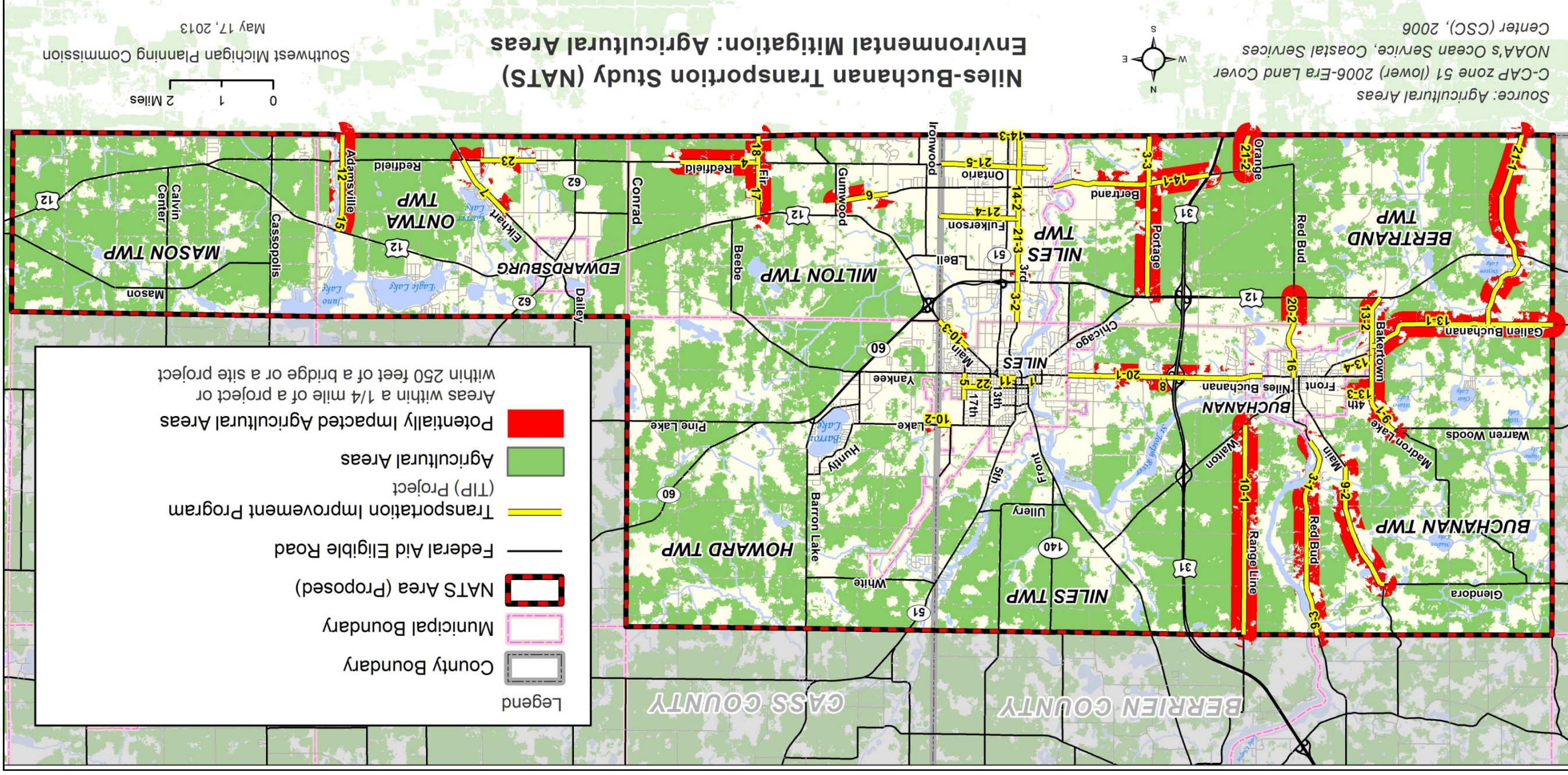


Niles-Buchanan Transportation Study (NATS)
Environmental Mitigation: Biological Rarity Probability Value
40 acre grid



Southwest Michigan Planning Commission
 May 17, 2013

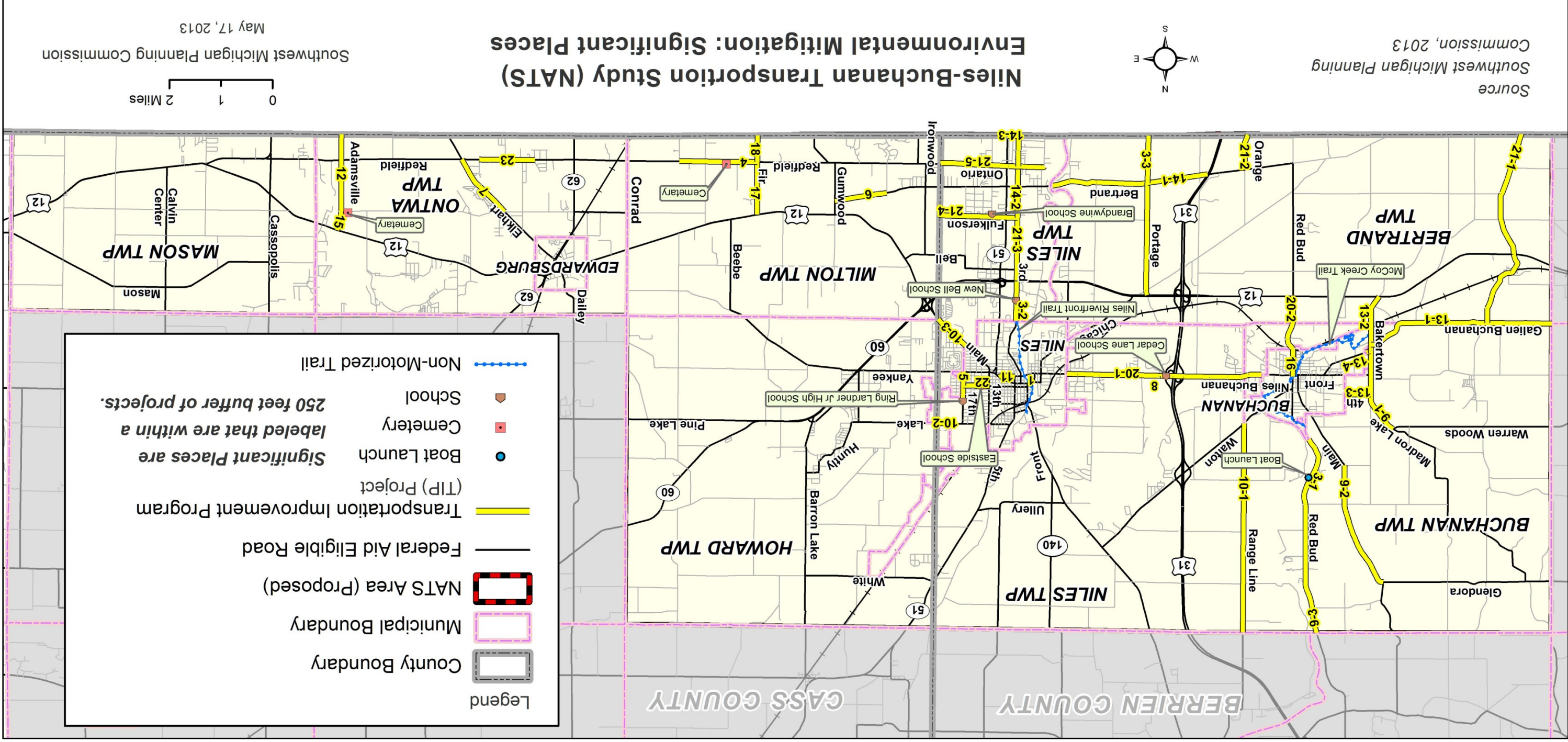
Map 2 - Environmental Mitigation: Agricultural Areas



Map 3 - Environmental Mitigation: Coldwater Streams

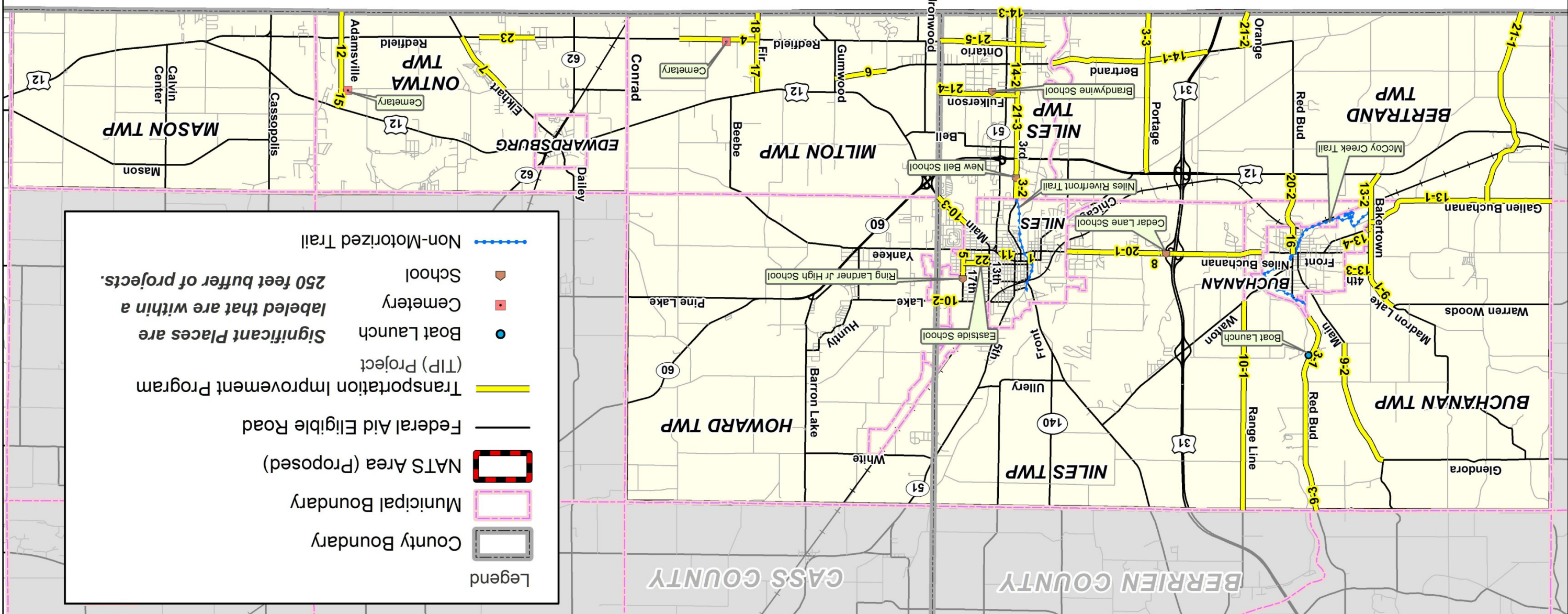
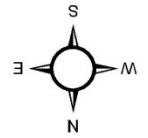


Map 4 - Environmental Mitigation: Significant Places

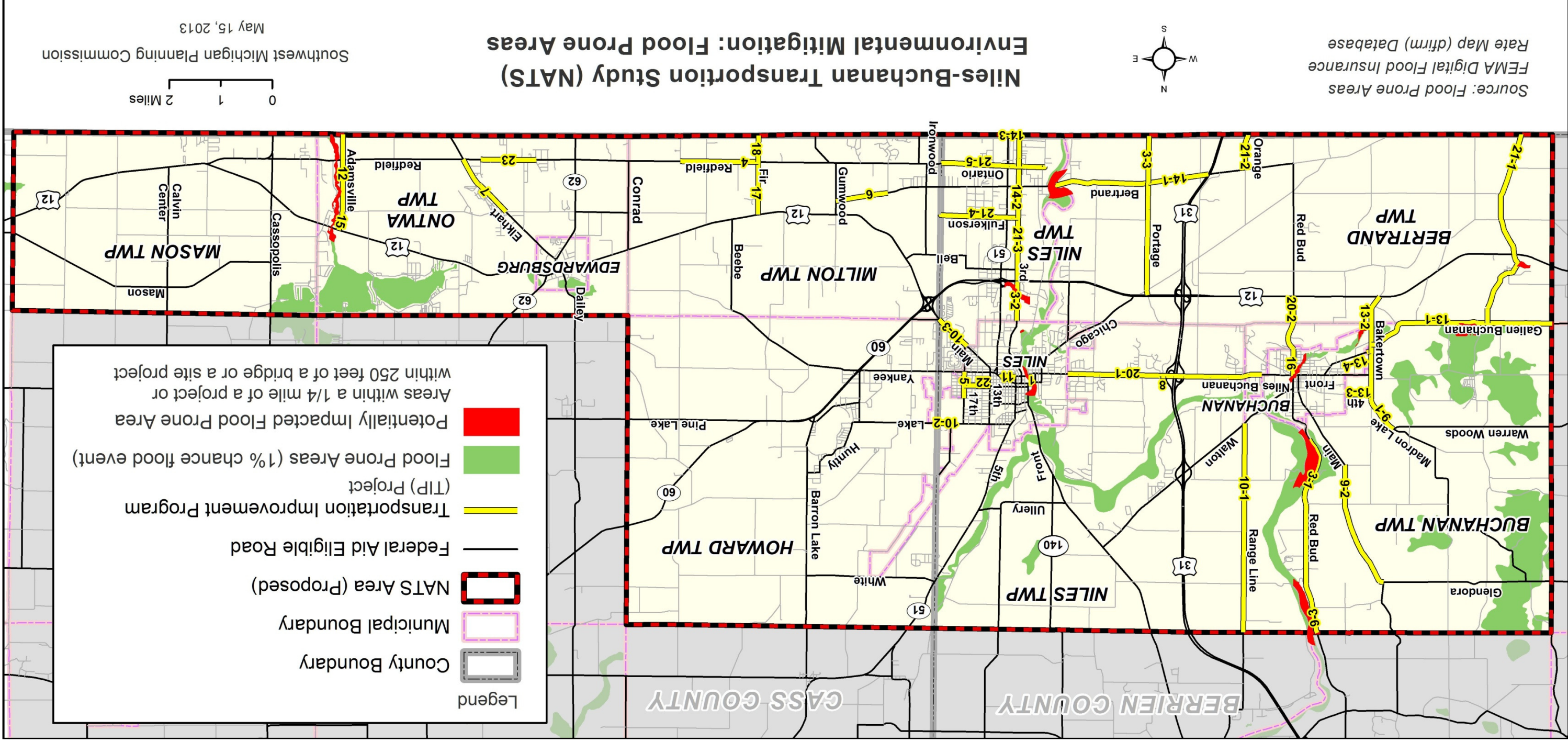


Niles-Buchanan Transportation Study (NATS) Environmental Mitigation: Significant Places

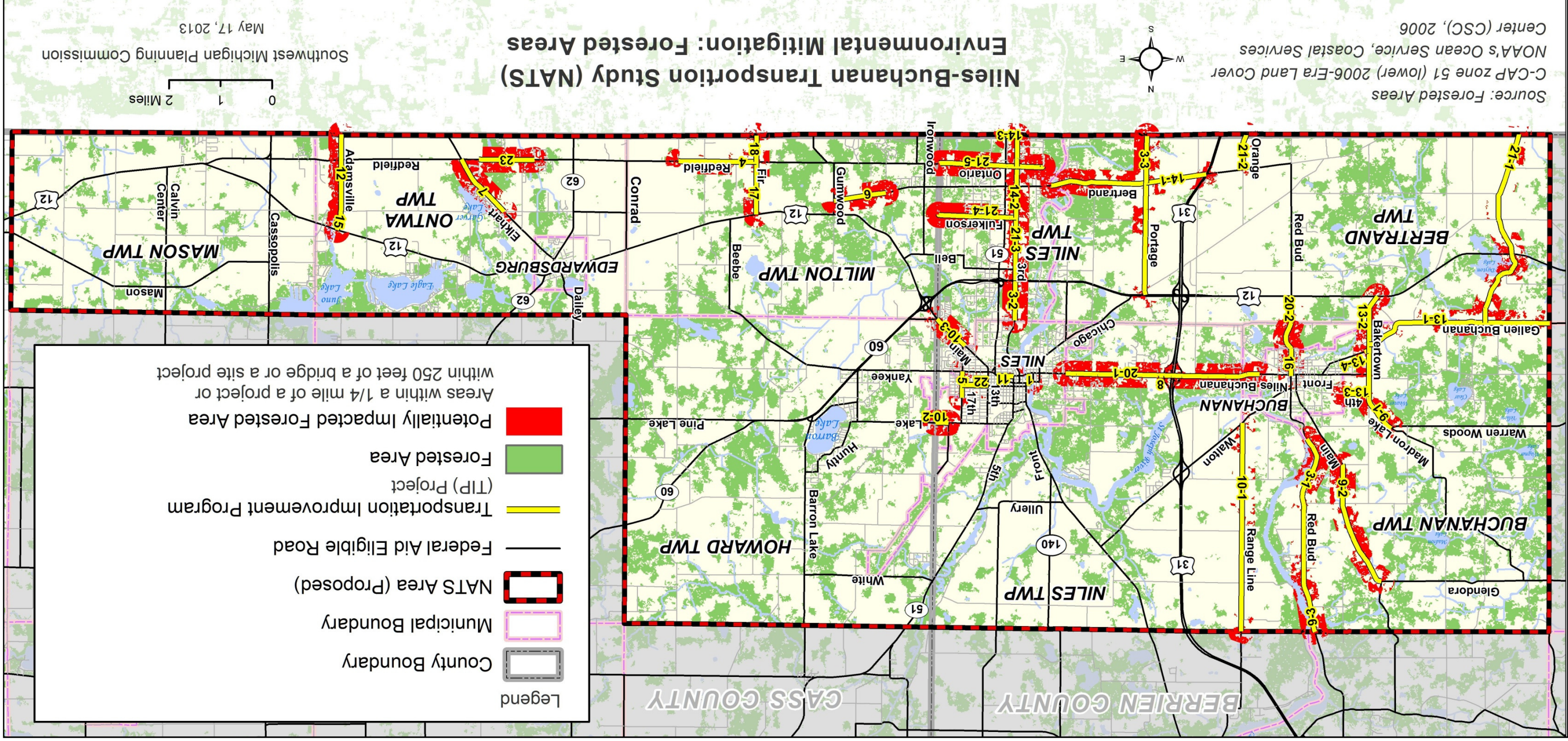
Source
Southwest Michigan Planning
Commission, 2013



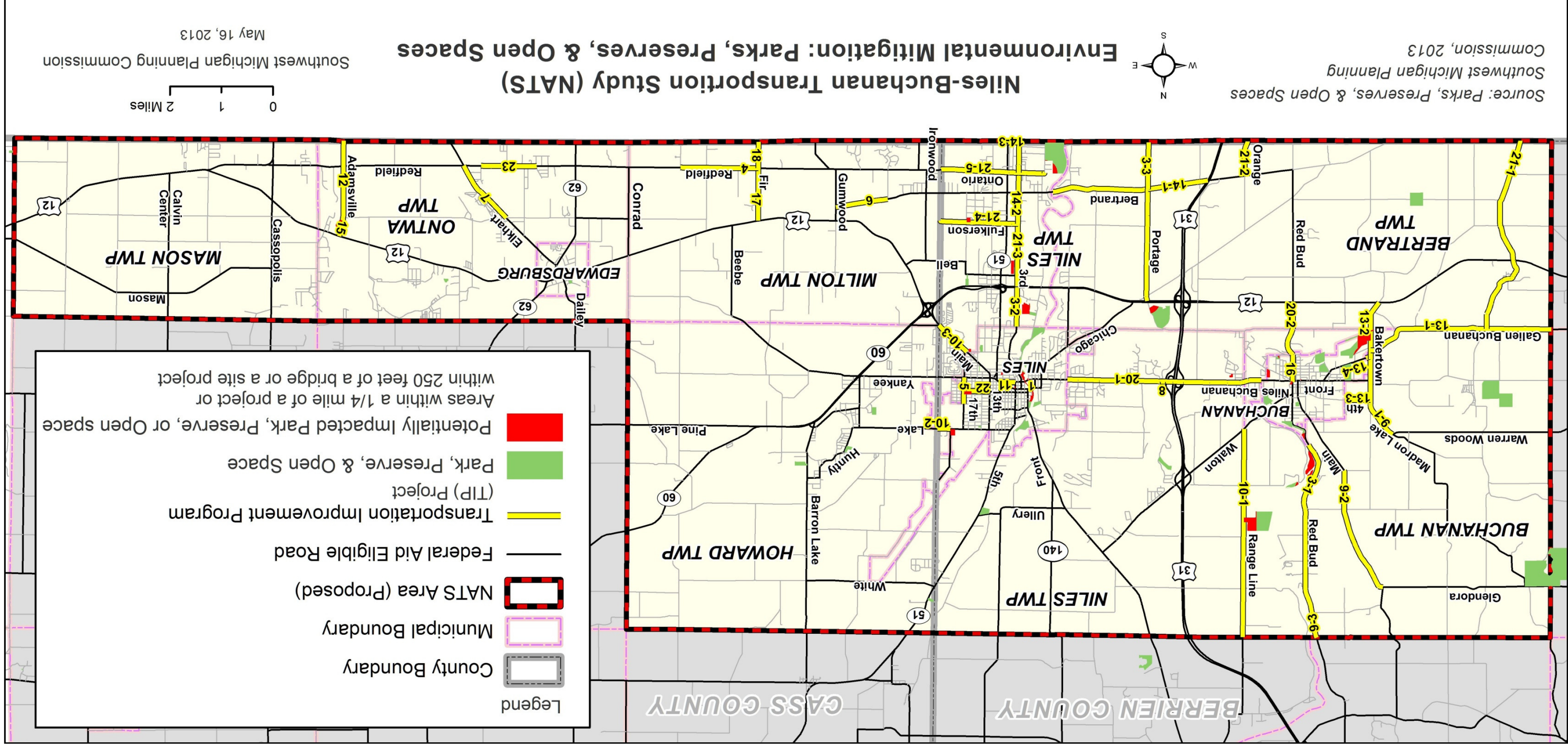
Map 5 - Environmental Mitigation: Flood Prone Areas



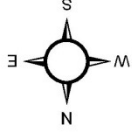
Map 6 - Environmental Mitigation: Forested Areas



Map 7 - Environmental Mitigation: Parks, Preserves, & Open Spaces

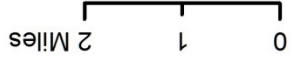


Source: Parks, Preserves, & Open Spaces
Southwest Michigan Planning
Commission, 2013



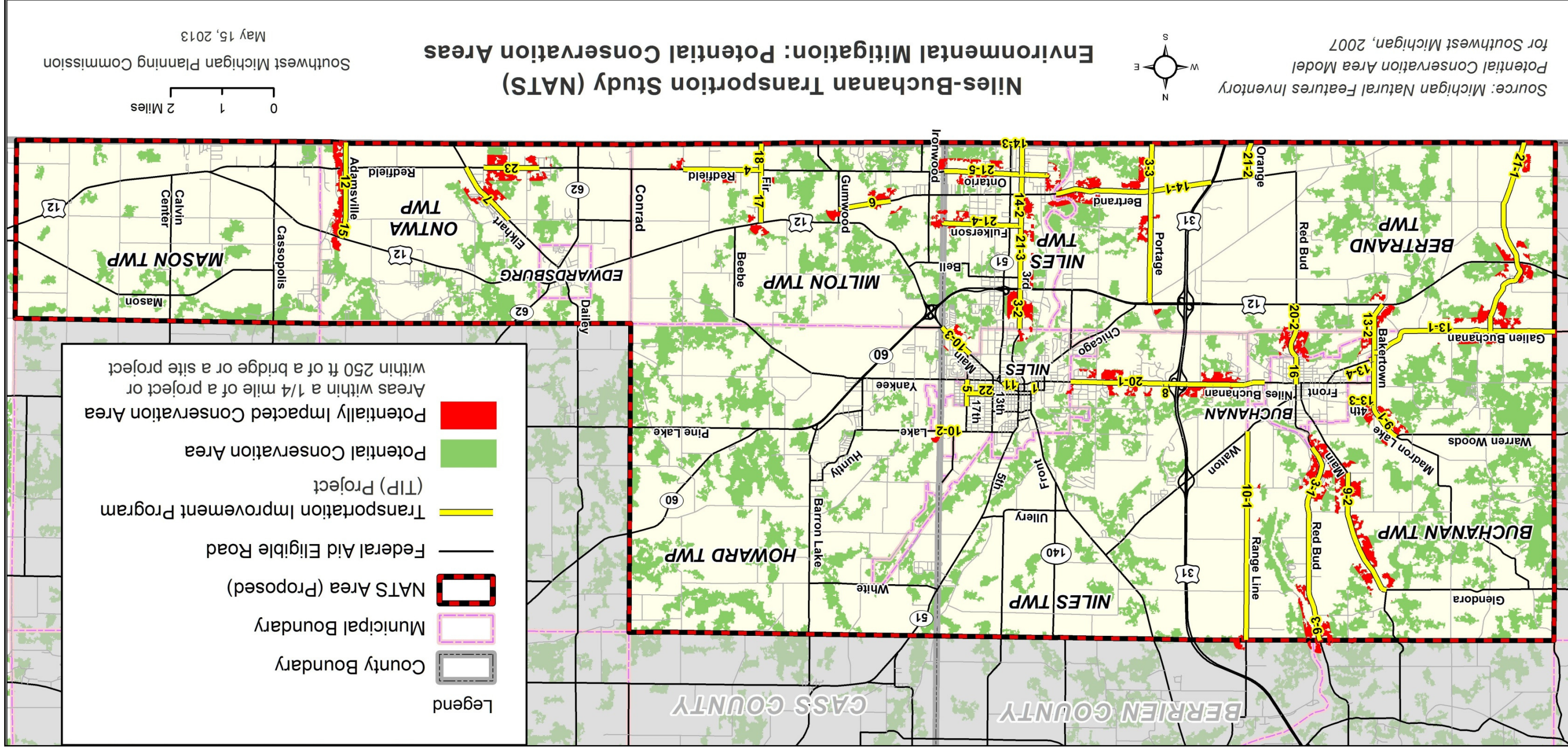
Niles-Buchanan Transportation Study (NATS) Environmental Mitigation: Parks, Preserves, & Open Spaces

Southwest Michigan Planning Commission
May 16, 2013

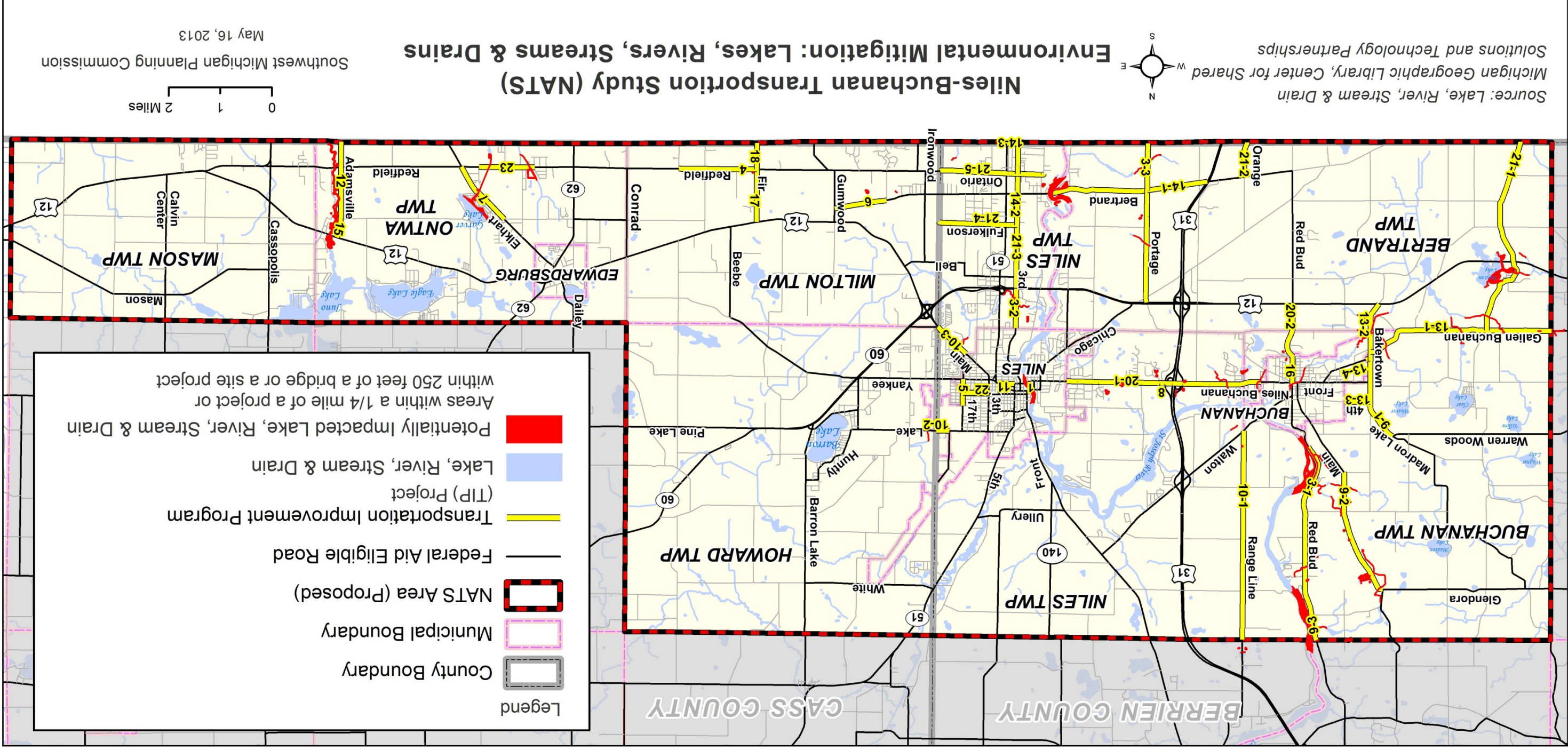


Legend

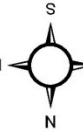
- County Boundary
- Municipal Boundary
- NATS Area (Proposed)
- Federal Aid Eligible Road
- Transportation Improvement Program (TIP) Project
- Park, Preserve, & Open Space
- Potentially Impacted Park, Preserve, or Open Space
- Areas within a 1/4 mile of a project or within 250 feet of a bridge or a site project



Map 9 - Environmental Mitigation: Lakes, Rivers, Streams & Drains



Source: Lake, River, Stream & Drain
 Michigan Geographic Library, Center for Shared
 Solutions and Technology Partnerships



Niles-Buchanan Transportation Study (NATS) Environmental Mitigation: Lakes, Rivers, Streams & Drains

Southwest Michigan Planning Commission
 May 16, 2013

