

## GREEN INFRASTRUCTURE

Marcy Colclough, Senior Planner, Southwest Michigan Planning Commission  
[colcloughm@swmpc.org](mailto:colcloughm@swmpc.org) 269-925-1137 x25



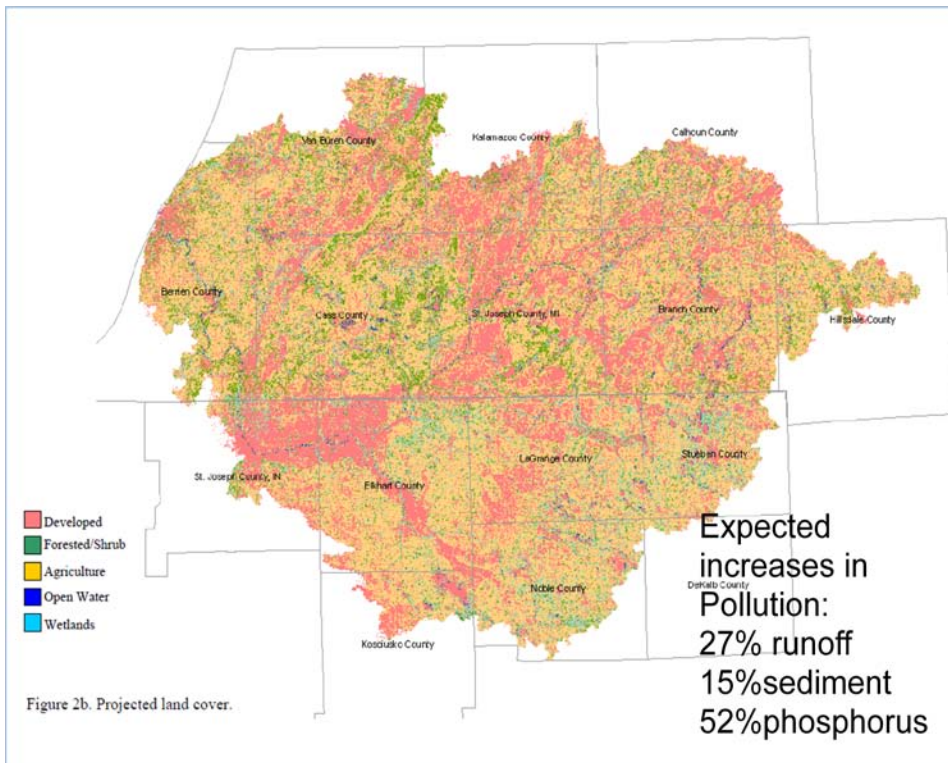
**Green Infrastructure** is...an interconnected **network** of green and open space that **conserves natural ecosystems and functions** and **provides** associated **benefits** to **humans**.

**Water related features** - rivers, lakes, wetlands, riparian areas, floodplains, groundwater recharge

**Land features** - forests, prairies, sand dunes, working lands (agriculture)

**Recreation & Cultural Features** – parks, beaches, trails, historical and cultural sites

[www.swmpc.org/growgreen.asp](http://www.swmpc.org/growgreen.asp)



**Local Government** authority:

“...to promote public health, safety and general welfare; to encourage the use of resources in accordance with their character and adaptability;... to facilitate provision of a ...safe and adequate water supply, recreation and other public improvements...”

**Master/Recreation Plans** –

inventory and state value of natural features and agricultural lands, goals and objectives, future land use map shows conservation areas

**Zoning Ordinance** - site plan review, wetland/water setbacks, reduce fragmentation of farmland, require Low Impact Development, encourage open space developments

[www.swmpc.org/lid.asp](http://www.swmpc.org/lid.asp) - Low Impact Development – techniques and examples

[www.swmpc.org/communityasmt.asp](http://www.swmpc.org/communityasmt.asp) - checklists for master plans and recreation plans, model ordinances

### What you can do today to help protect water quality?

- 📍 Go to your local/county **planning commission meetings!** Check out the master plan, future land use map, zoning map, zoning ordinance..Make changes now, before it is too late!
- 📍 **On your property** - Plant native species, Restore wetland and riparian areas, Consider land protection options (conservation easements), Implement agricultural best management practices
- 📍 **Support Local Agriculture** - Buy at Farm Markets, Participate in Agri-tourism activities like corn mazes, apple picking, cranberry harvest days, wineries, etc., Join a CSA (community supported agriculture)