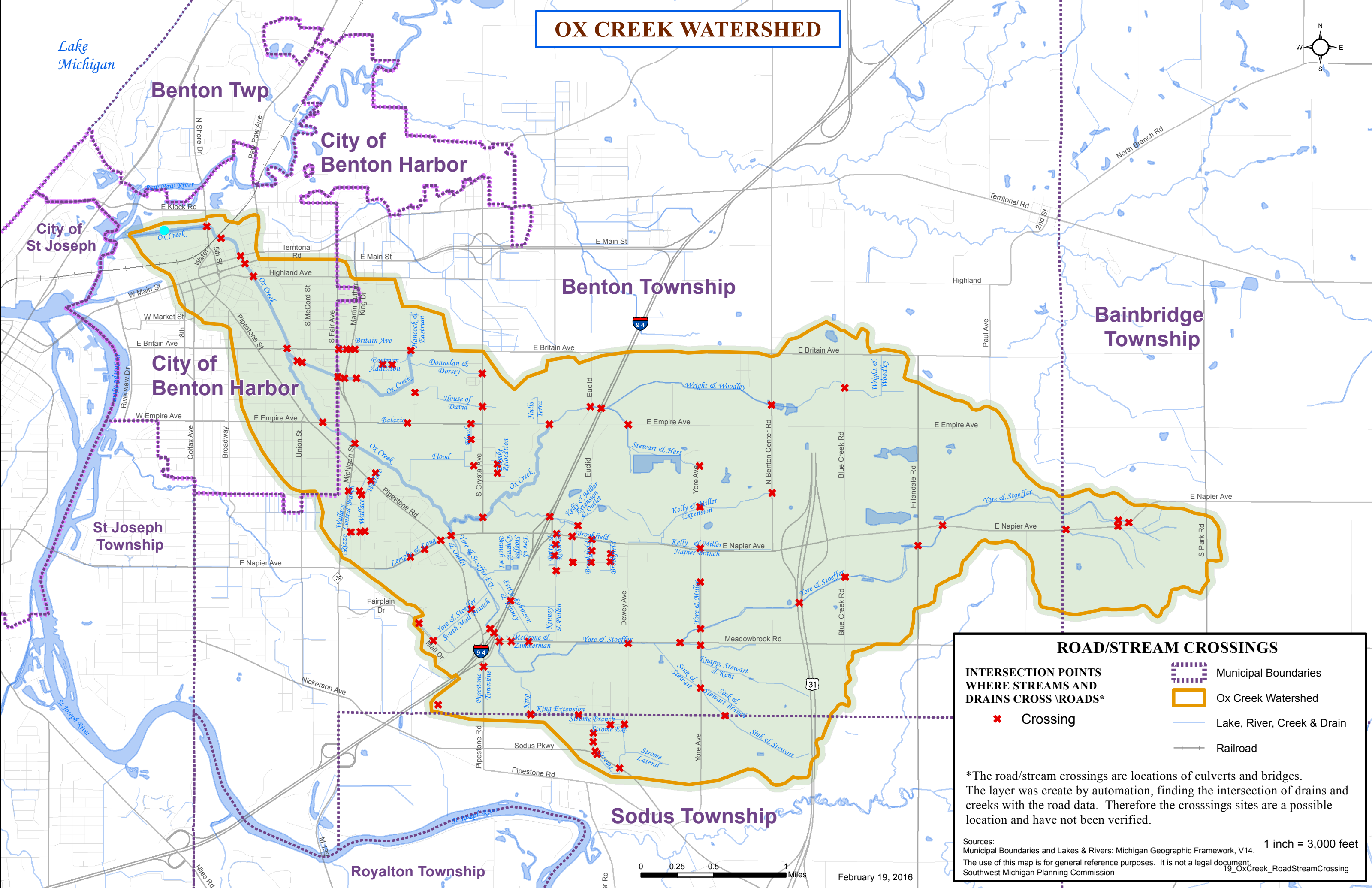
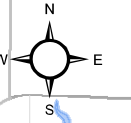


# OX CREEK WATERSHED



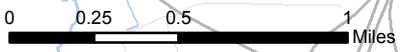
**ROAD/STREAM CROSSINGS**

<p><b>INTERSECTION POINTS WHERE STREAMS AND DRAINS CROSS \ROADS*</b></p> <p style="text-align: center;">✕ Crossing</p>	<ul style="list-style-type: none"> <li><span style="border: 1px dashed purple; display: inline-block; width: 20px; height: 10px; margin-right: 5px;"></span> Municipal Boundaries</li> <li><span style="border: 2px solid orange; display: inline-block; width: 20px; height: 10px; margin-right: 5px;"></span> Ox Creek Watershed</li> <li><span style="border-bottom: 1px solid blue; display: inline-block; width: 20px; margin-right: 5px;"></span> Lake, River, Creek &amp; Drain</li> <li><span style="border-bottom: 1px solid gray; display: inline-block; width: 20px; margin-right: 5px;"></span> Railroad</li> </ul>
--	---

\*The road/stream crossings are locations of culverts and bridges. The layer was create by automation, finding the intersection of drains and creeks with the road data. Therefore the crossings sites are a possible location and have not been verified.

Sources: Municipal Boundaries and Lakes & Rivers: Michigan Geographic Framework, V14.  
The use of this map is for general reference purposes. It is not a legal document.  
Southwest Michigan Planning Commission

1 inch = 3,000 feet



February 19, 2016

19\_OxCreek\_RoadStreamCrossing