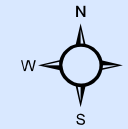


# Lake Michigan Tributaries WETLANDS FUNCTION\*

## SOUTH SECTION



### SEDIMENT RETENTION & NUTRIENT TRANSFORMATION\*

Existing Wetland

- High Significance
- Medium Significance

Lost Wetland

- High Significance
- Medium Significance

\*Wetland Functional Assessment rates wetlands according to its ability to perform specific ecological functions. Shown on this map are wetlands that function at higher levels to retain sediment from entering waterways and transform nutrients.

Existing Wetland (All other wetlands not shown in the Wetland Functional Assessment)

Base Layers

- Municipal Boundaries
- Stream
- Drain
- ++ Railroad

March 05, 2016

MICHIANA

GRAND BEACH

CITY OF NEW BUFFALO

BERRIEN COUNTY

Chickaming Township

New Buffalo Township

Lake Michigan

Light House Creek

Oak Creek Drain

White Creek

Painterville Drain

MARQUETTE DR

TIMBER LN

BUFFALO ST

STROMER RD

EUBKE RD

WILSON RD

ROSE CITY RD

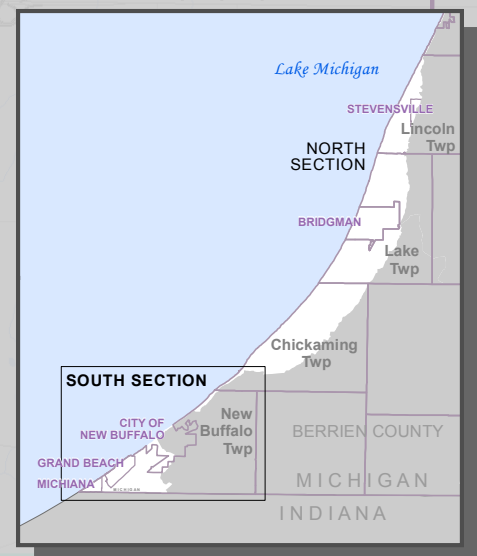
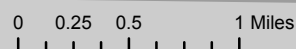
SHEDD RD

KLUVER RD

MICHIANA DR

MICHIGAN INDIANA

Sources  
Base Map: Michigan Center for Geographic Information, Framework v10a, 2013.  
Streams: Michigan Center for Geographic Information, Framework v14a, 2015.  
Drains: Berrien County, 2007  
Wetlands: MDEQ, 2016



The use of this map is for general reference purposes. It is not a legal document. 14\_South\_LLWFA\_Sediment

Southwest Michigan Planning Commission